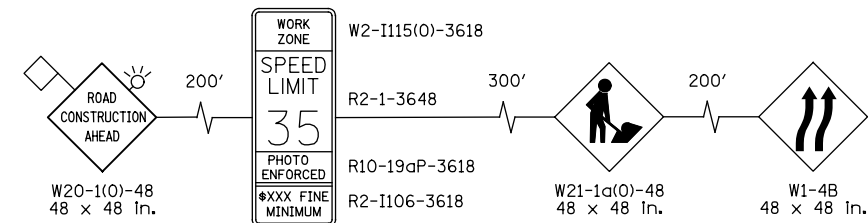


NOTE:
SIGN W21-1a(O)-48 SHALL BE TAKEN DOWN WHEN WORKERS ARE NOT PRESENT.

LEGEND		TYPE II BARRICADES OR DRUMS WITH STEADY BURNING LIGHTS @ 50 FT CENTERS ALONG ROADWAY (TANGENTS), 20 FT CENTERS MONO-DIRECTIONAL ALONG TAPERS, AND 12 FT CENTERS ALONG RADII.	
	WORK AREA		TYPE II BARRICADES OR DRUMS WITH STEADY BURNING LIGHTS @ 50 FT CENTERS ALONG ROADWAY (TANGENTS), 20 FT CENTERS MONO-DIRECTIONAL ALONG TAPERS, AND 12 FT CENTERS ALONG RADII.
	TEMPORARY PAVEMENT		IMP ATTN TEMP FRN TL3
	PROP. BASE COURSE WIDENING WITH 2 1/2" OF TEMPORARY PAVEMENT		TEMPORARY CONCRETE BARRIER
			VERTICAL PANEL WITH STEADY BURNING LIGHT 50 FT C-C
			TYPE III BARRICADES WITH FLASHING LIGHTS
			DIRECTION OF TRAFFIC

ADVANCE SIGNING DETAIL:



 PATRICK ENGINEERING INC. 4970 VARSITY DRIVE LISLE, IL 60532 patrickengineering.com	USER NAME = tkceppen(Rdwy_Lisle)	DESIGNED - CPK	REVISED -
	PLOT CONFIG = PDF(Grey_Small).plt	DRAWN - CPK	REVISED -
	PLOT SCALE = 1:100	CHECKED - JAH	REVISED -
	PLOT DATE = 2/18/2013 7:06:50 PM	DATE - 2/18/2013	REVISED -

**STATE OF ILLINOIS
DEPARTMENT OF TRANSPORTATION**

**SUGGESTED STAGES OF CONSTRUCTION & TRAFFIC CONTROL
PRE-STAGE CUMBERLAND AVENUE**

SCALE: 1"=50' SHEET MOT-11 OF 42 STA. TO STA.

F.A.U. RTE.	SECTION	COUNTY	TOTAL SHEETS	SHEET NO.
2746	1616B	COOK	404	71
				60J14

FED. ROAD DIST. NO. ILLINOIS FED. AID PROJECT