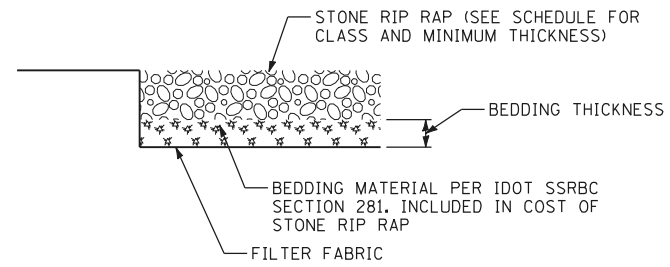


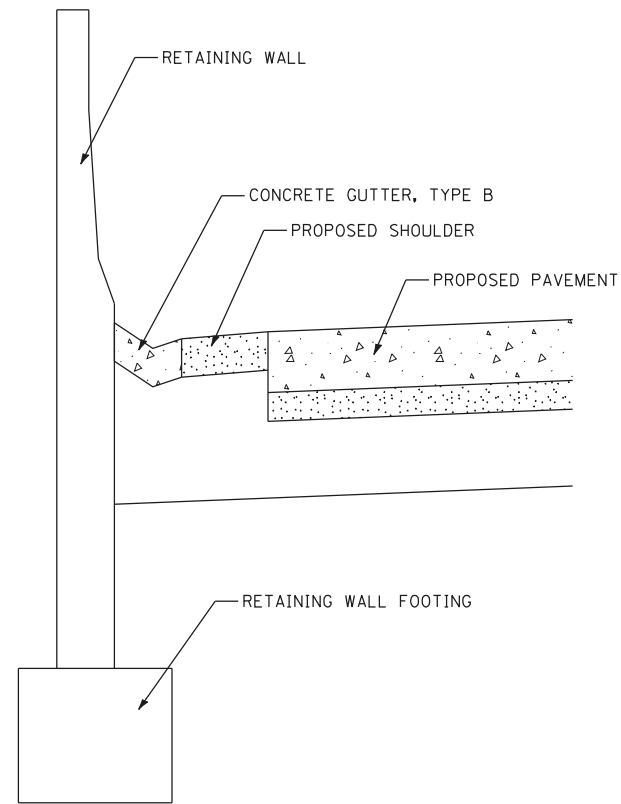
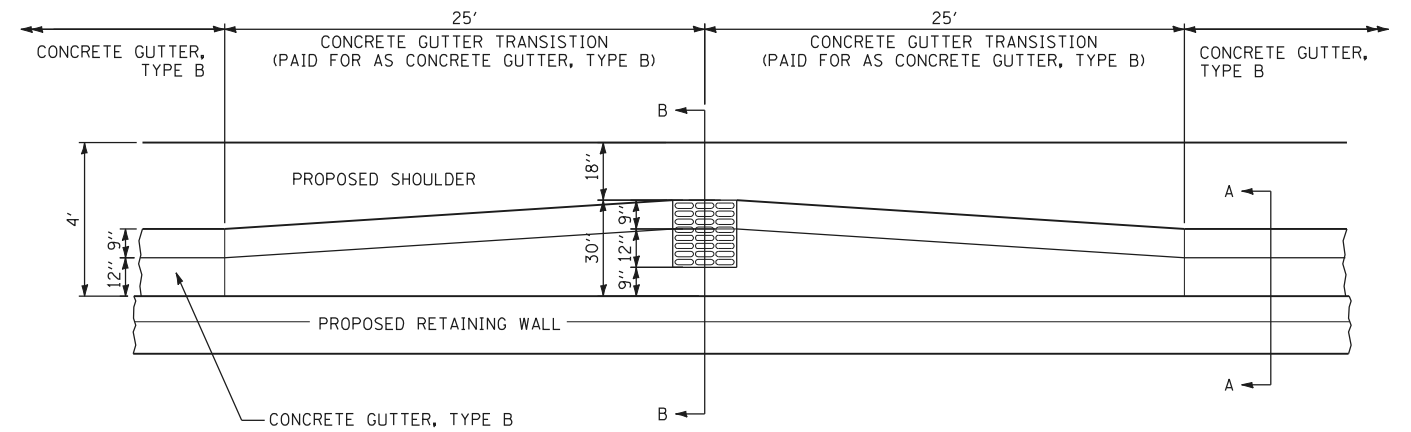
RIP RAP APRON



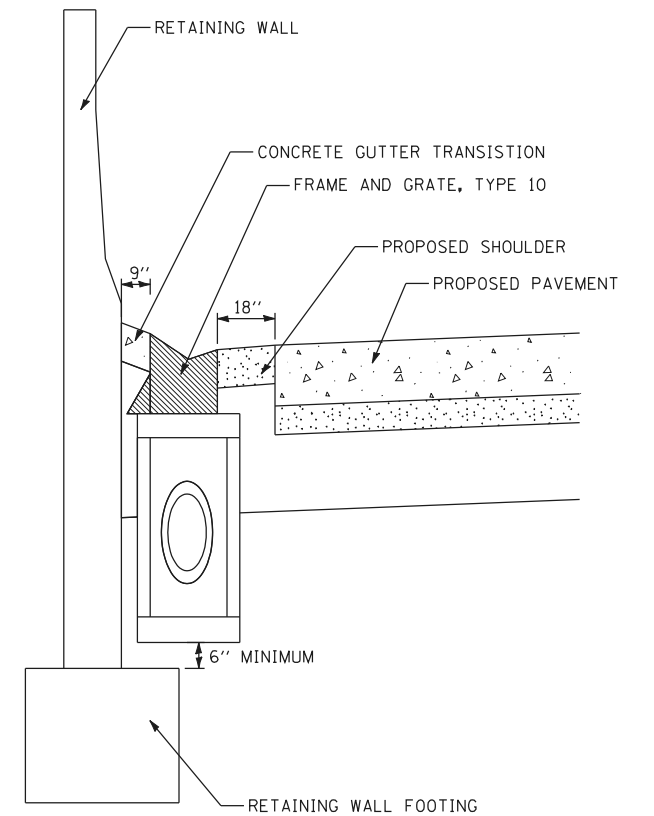
SECTION A-A

STONE RIPRAP DETAIL

28100107 - STONE RIPRAP, CLASS A4										
SHEET	LOCATION			PIPE SIZE (IN.)	3D (FT.)	L (FT.)	W (FT.)	MINIMUM THICKNESS (IN.)	BEDDING THICKNESS (IN.)	QUANTITY (SQ. YD.)
	STATION	OFFSET	RT/LT							
DU-06	112+58	145'	RT	36"	9 FT	12 FT	17 FT	16"	6"	17
DU-06	114+70	435'	RT	15"	4 FT	8 FT	9 FT	16"	6"	6
DU-07	121+65	160'	RT	24"	6 FT	8 FT	11 FT	16"	6"	8
DU-08	121+73	157'	LT	12"	3 FT	6 FT	7 FT	16"	6"	3
TOTAL										34



SECTION A-A



SECTION B-B

CONCRETE GUTTER, TYPE B DETAIL

\\160J14\shd\drain_15_scheduled.dgn
 2/18/2013 2:06:08 PM

USER NAME = cgotowski	DESIGNED - GR	REVISED -
	DRAWN - GR	REVISED -
PLOT SCALE = 1:100	CHECKED - DT	REVISED -
PLOT DATE = 2/18/2013	DATE - 2/18/2013	REVISED -



**STATE OF ILLINOIS
DEPARTMENT OF TRANSPORTATION**

**DRAINAGE DETAILS
CUMBERLAND AVENUE AT I-90**

SCALE: 1"=50' SHEET NO. OF SHEETS STA. TO STA.

F.A.U. RTE.	SECTION	COUNTY	TOTAL SHEETS	SHEET NO.
2746	1616B	COOK	404	124
CONTRACT NO. 60J14			DU-16	
ILLINOIS FED. AID PROJECT				