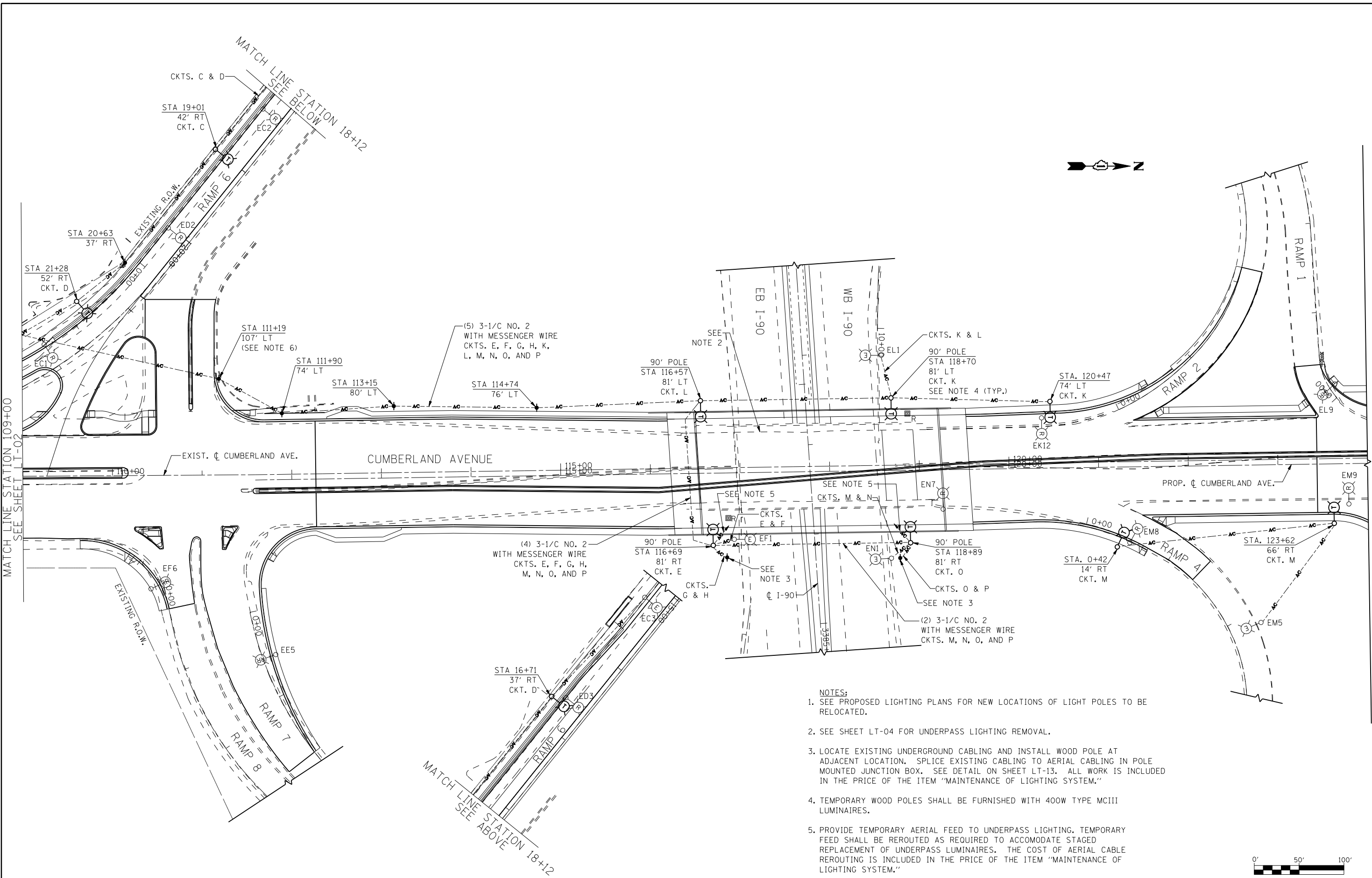


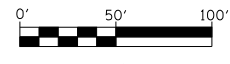
s:\projects\3009 1-90\_cumberland-patrick\project work\disciplines\electrical\sheet\DI60J14-sht-light.03.dgn

2:43:17 PM

2/18/2013



- NOTES:**
- SEE PROPOSED LIGHTING PLANS FOR NEW LOCATIONS OF LIGHT POLES TO BE RELOCATED.
  - SEE SHEET LT-04 FOR UNDERPASS LIGHTING REMOVAL.
  - LOCATE EXISTING UNDERGROUND CABLING AND INSTALL WOOD POLE AT ADJACENT LOCATION. SPLICE EXISTING CABLING TO AERIAL CABLING IN POLE MOUNTED JUNCTION BOX. SEE DETAIL ON SHEET LT-13. ALL WORK IS INCLUDED IN THE PRICE OF THE ITEM "MAINTENANCE OF LIGHTING SYSTEM."
  - TEMPORARY WOOD POLES SHALL BE FURNISHED WITH 400W TYPE MCIII LUMINAIRES.
  - PROVIDE TEMPORARY AERIAL FEED TO UNDERPASS LIGHTING. TEMPORARY FEED SHALL BE REROUTED AS REQUIRED TO ACCOMMODATE STAGED REPLACEMENT OF UNDERPASS LUMINAIRES. THE COST OF AERIAL CABLE REROUTING IS INCLUDED IN THE PRICE OF THE ITEM "MAINTENANCE OF LIGHTING SYSTEM."
  - POLE OFFSET IS REFERENCED TO EXISTING CUMBERLAND AVENUE CENTERLINE.



USER NAME =	DESIGNED - RAS	REVISED -
	DRAWN - RAS	REVISED -
PLOT SCALE =	CHECKED - MKR	REVISED -
PLOT DATE =	DATE - 2/18/2013	REVISED -



**STATE OF ILLINOIS  
DEPARTMENT OF TRANSPORTATION**

**IDOT TEMPORARY LIGHTING AND REMOVAL PLAN  
CUMBERLAND AVENUE**

SCALE: 1" = 50' SHEET NO. 2 OF 2 SHEETS STA. 109+00 TO STA. 124+00

F.A.U. RTE.	SECTION	COUNTY	TOTAL SHEETS	SHEET NO.
2746	1616B	COOK	404	235
CONTRACT NO. 60J14				
ILLINOIS FED. AID PROJECT				

LT-03