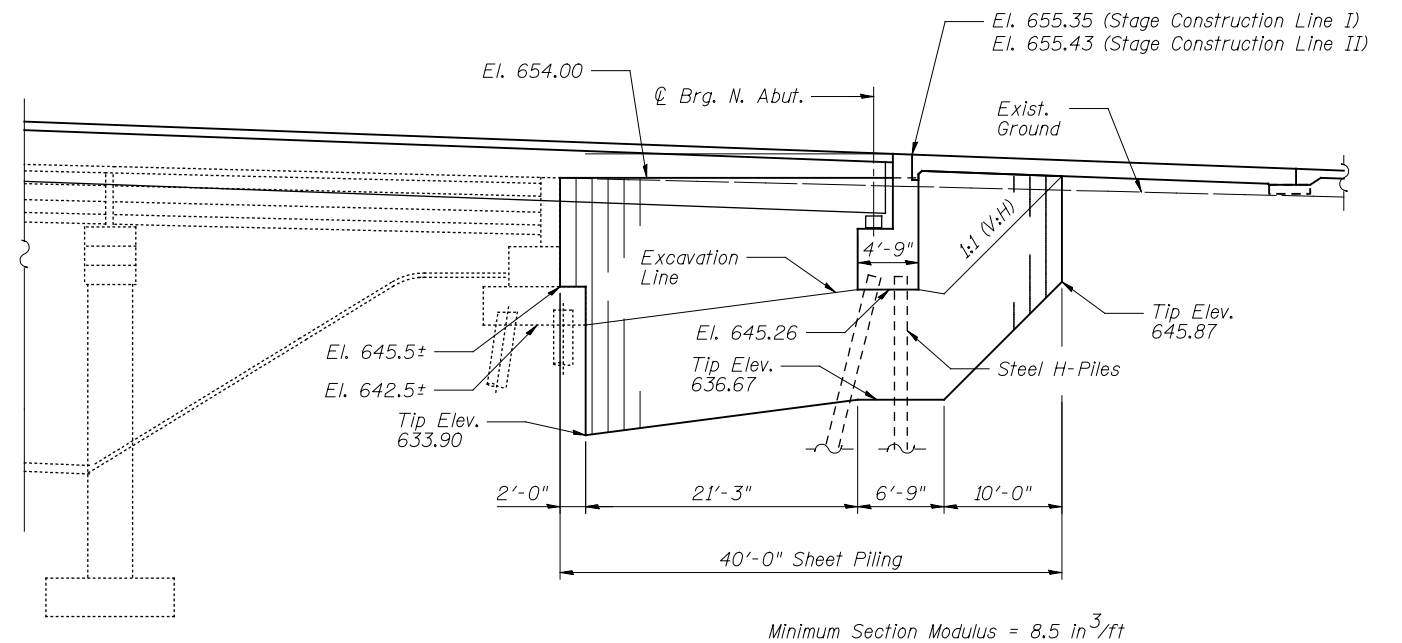


ELEVATION TEMPORARY SOIL RETENTION SYSTEM

Notes:

1. A cantilevered sheet piling design does not appear feasible and additional members or other retention systems may be necessary. The Contractor shall submit a temporary soil retention system design including plan details and calculations for review and acceptance by the Engineer.



ELEVATION TEMPORARY SHEET PILING

Notes:

(North Abutment)

1. If the Contractor chooses to alter the temporary cantilevered sheet piling design requirements shown on the plans, a design submittal including plan details and calculations will be required for review and acceptance by the Engineer.
2. The Contractor shall connect the first sheet to the existing abutment wall to ensure stability of sheets driven to the top of the existing footing. This connection shall be reviewed and accepted by the Engineer and included in the cost for Temporary Sheet Piling.

BILL OF MATERIAL

ITEM	UNIT	TOTAL
Temporary Sheet Piling	Sq. Ft.	1248
Temporary Soil Retention System	Sq. Ft.	1908

	PATRICK ENGINEERING INC. 4970 VARSITY DRIVE LISLE, IL 60532 patrickengineering.com	USER NAME = DESIGNED - AD DRAWN - AD CHECKED - AY DATE - 2/18/2013	REVISED REVISED REVISED REVISED
	PLOT SCALE =		
	PLOT DATE =		

STATE OF ILLINOIS
DEPARTMENT OF TRANSPORTATION

TEMPORARY SHEET PILING AND SOIL RETENTION SYSTEM
STRUCTURE NO. 016-1250

SCALE: NONE SHEET NO. S6 OF S59 SHEETS

F.A.U. RTE.	SECTION	COUNTY	TOTAL SHEETS	SHEET NO.
2746	1616B	COOK	404	275
CONTRACT NO. 60J14			ILLINOIS FED. AID PROJECT	