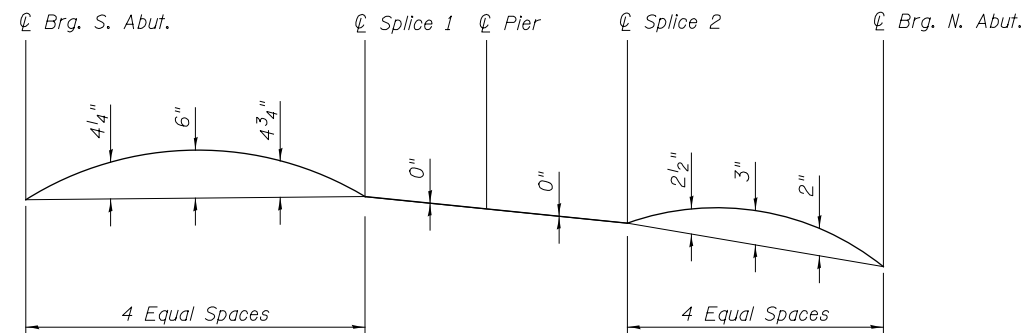
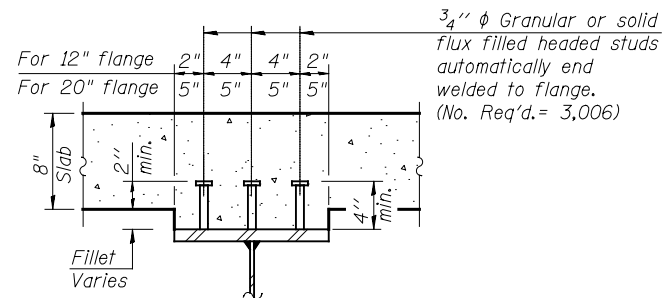


GIRDER ELEVATION

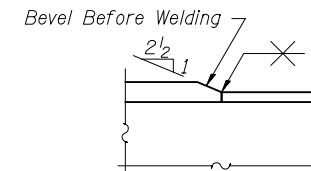
(Girders 10 is shown. Girder 11 is similar but the intermediate stiffeners are placed on the front side (east side) of the web)



TYPICAL CAMBER DIAGRAM



SECTION A-A

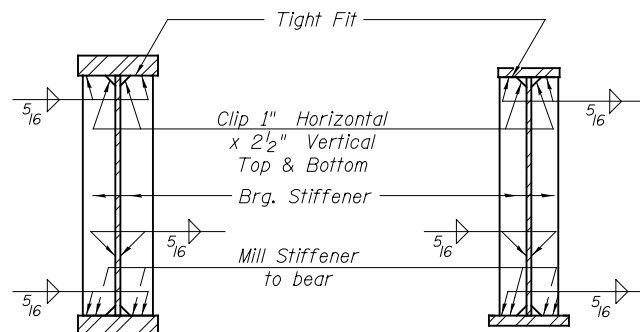


DETAIL "B"

TOP OF WEB ELEVATIONS

(For Fabrication Only)

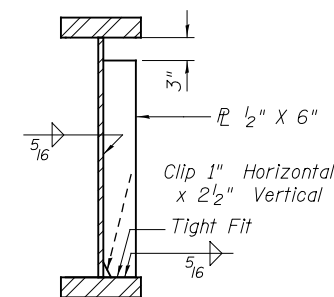
Beam Number	Location				
	Brg. S. Abut.	Splice 1	Pier	Splice 2	Brg. N. Abut.
1	---	---	---	---	---
2	---	---	---	---	---
3	---	---	---	---	---
4	---	---	---	---	---
5	---	---	---	---	---
6	---	---	---	---	---
7	---	---	---	---	---
8	---	---	---	---	---
9	---	---	---	---	---
10	658.44	658.53	657.90	657.18	654.99
11	658.45	658.52	657.90	657.18	654.98
12	---	---	---	---	---
13	---	---	---	---	---
14	---	---	---	---	---
15	---	---	---	---	---
16	---	---	---	---	---
17	---	---	---	---	---
18	---	---	---	---	---
19	---	---	---	---	---
20	---	---	---	---	---



SECTION AT PIER

SECTION AT ABUTMENT

BEARING STIFFENERS



INTERMEDIATE STIFFENER

Girder 10- Looking South
Girder 11- Looking North

NOTES:

1. Load carrying components designated NTR shall conform to the Impact Testing Requirement, Zone 2.
2. Camber shown includes dead load deflection due to deck concrete and steel weight only.
3. See Framing Plan for diaphragm placement.