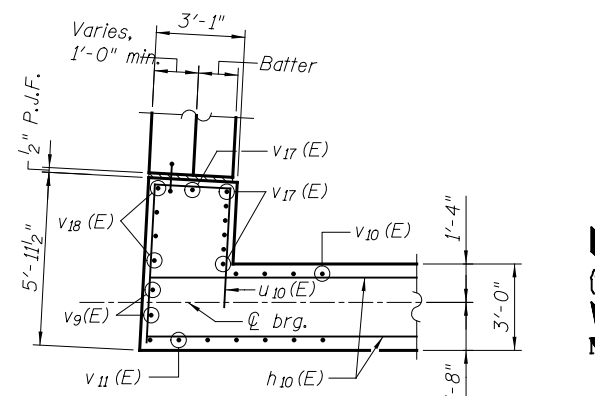
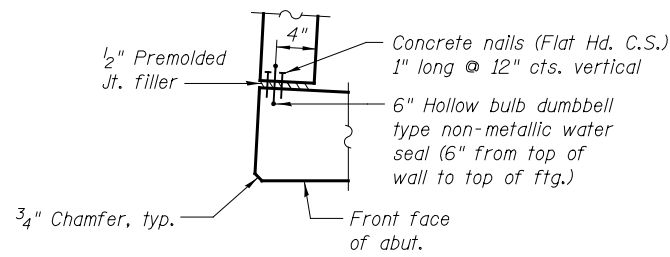


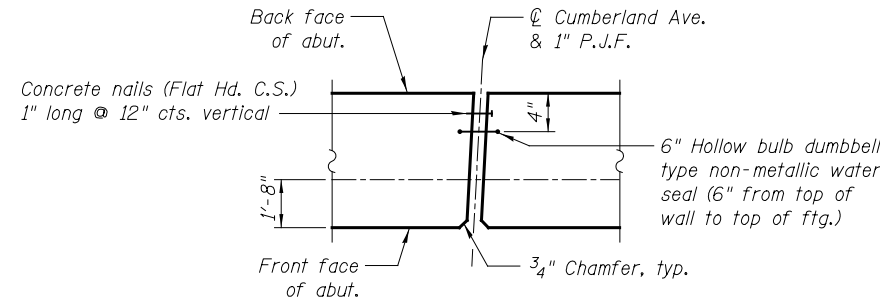
SECTION A-A
(Above bearing seat)



SECTION B-B
(Below bearing seat)

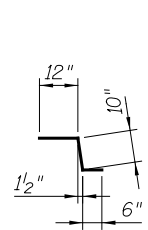


DETAIL A

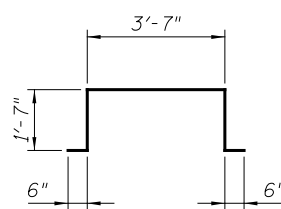


DETAIL B

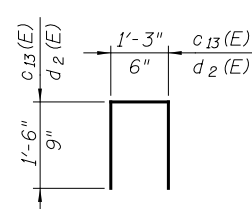
(Section below brg. seat shown, Backwall similar)



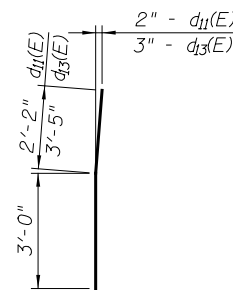
BAR c₁₀(E)



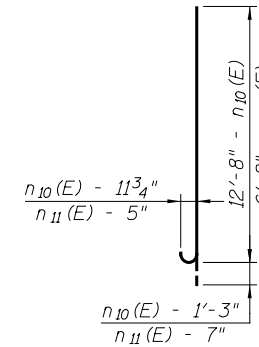
BAR c₁₂(E)



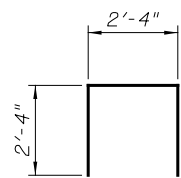
BAR c₁₃(E), d₂(E)



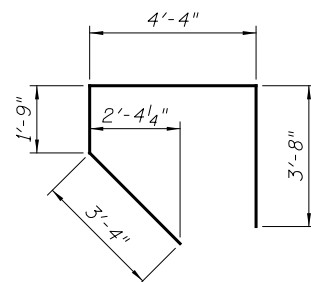
BAR d₁₁(E) & d₁₃(E)



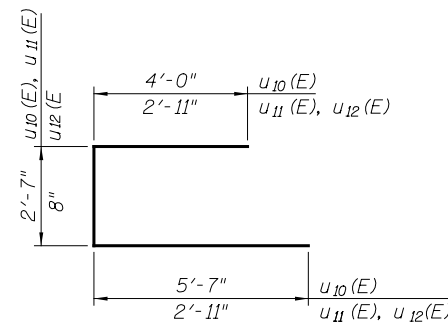
BAR n₁₀(E) & n₁₁(E)



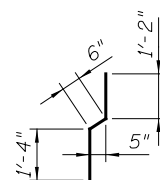
BAR s₁₀(E)



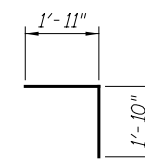
BAR s₁₁(E)



BAR u₁₀(E), u₁₁(E) & u₁₂(E)



BAR v₁₂(E)



BAR v₁₃(E)

BILL OF MATERIAL

Bar	No.	Size	Length	Shape
c10(E)	4	#5	2'- 4"	┌
c11(E)	4	#5	6'- 8"	┌
c12(E)	2	#5	7'- 9"	┌
c13(E)	15	#5	4'- 3"	┌
d2(E)	24	#4	2'- 0"	┌
d10(E)	90	#6	5'- 2"	┌
d11(E)	90	#4	5'- 2"	┌
d12(E)	10	#6	6'- 5"	┌
d13(E)	10	#4	6'- 5"	┌
e10(E)	32	#4	21'- 3"	┌
e11(E)	16	#4	2'- 11"	┌
h10(E)	220	#5	25'- 0"	┌
h11(E)	122	#5	21'- 8"	┌
h12(E)	3	#5	5'- 5"	┌
h13(E)	20	#6	25'- 6"	┌
h14(E)	108	#5	43'- 8"	┌
h15(E)	20	#4	3'- 8"	┌
h16(E)	3	#5	5'- 0"	┌
h17(E)	10	#6	21'- 8"	┌
n10(E)	440	#9	13'- 11"	┌
n11(E)	144	#5	7'- 3"	┌
s10(E)	98	#5	7'- 0"	┌
s11(E)	134	#5	13'- 1"	┌
t10(E)	392	#9	14'- 8"	┌
t11(E)	180	#9	14'- 2"	┌
u10(E)	84	#5	12'- 2"	┌
u11(E)	10	#5	8'- 5"	┌
u12(E)	6	#5	6'- 6"	┌
v9(E)	4	#5	19'- 11"	┌
v10(E)	134	#7	15'- 3"	┌
v11(E)	140	#5	19'- 0"	┌
v12(E)	138	#4	3'- 0"	┌
v13(E)	138	#5	3'- 9"	┌
v14(E)	140	#5	8'- 0"	┌
v15(E)	68	#5	11'- 6"	┌
v16(E)	90	#4	25'- 6"	┌
v17(E)	166	#7	21'- 4"	┌
v18(E)	8	#4	26'- 0"	┌
w10(E)	128	#5	26'- 11"	┌
w11(E)	54	#5	44'- 0"	┌
w12(E)	64	#5	23'- 3"	┌
Structure Excavation		Cu. Yd.	3,581	
Concrete Structures		Cu. Yd.	942.5	
Reinforcement Bars, Epoxy Coated		Pound	96,610	
Furnishing Steel Piles, HP 12x53		Foot	5,978	
Driving Piles		Foot	5,978	
Test Pile Steel, HP 12x53		Each	2	
Concrete Sealer		Sq. Ft.	4,007	
Bar Splicers		Each	344	
Protective Coat		Sq. Yd.	33	