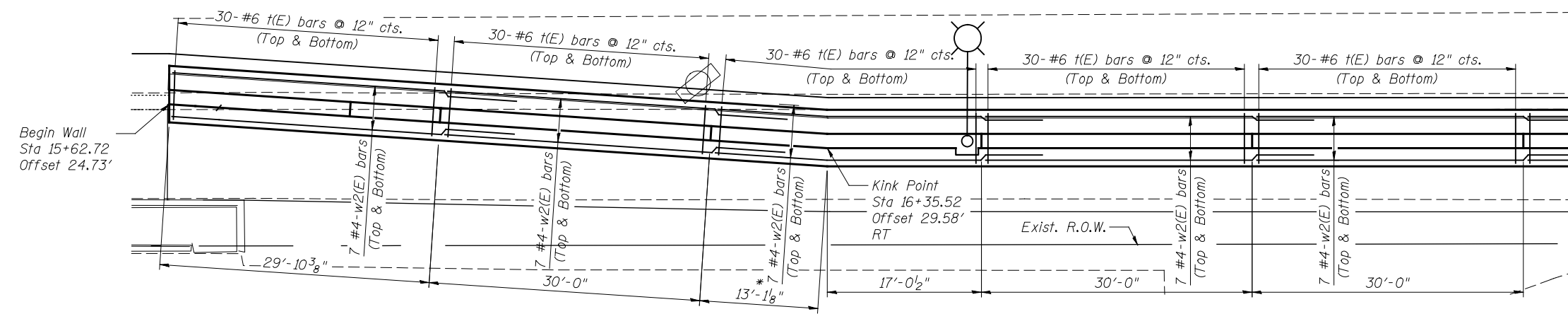
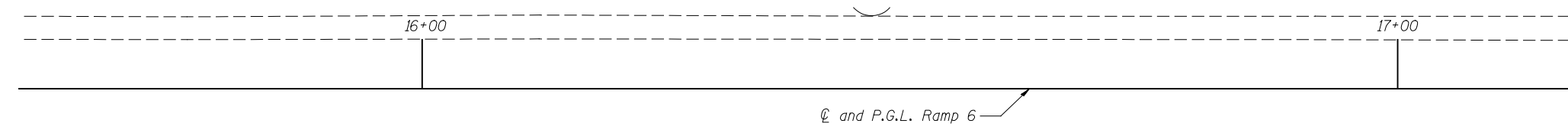
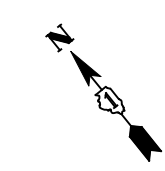


Note: Existing reinforcement shall be cleaned and incorporated into the new construction with a minimum lap of 2'-0". Cost included with Concrete Removal.

* Bend in field

30- #4 n(E) bars @ 12" cts. (F.F., typ. at 30' panels)
 30- #6 n(E) bars @ 12" cts. (B.F., typ. at 30' panels)
 30- #4 v4(E) bars at 12" cts. (F.F., typ. at 30' panels)
 30- #6 v(E) bars at 12" cts. (B.F., typ. at 30' panels)

ELEVATION



PLAN

PATRICK ENGINEERING INC.
 4970 VARSITY DRIVE
 LISLE, IL 60532
 patrickengineering.com

USER NAME =	DESIGNED - AD	REVISED
DRAWN - AD	REVISIONS	
PLOT SCALE =	CHECKED - AY	REVISED
PLOT DATE =	DATE - 2/18/2013	REVISED

**STATE OF ILLINOIS
 DEPARTMENT OF TRANSPORTATION**

**PLAN AND ELEVATION 1
 RETAINING WALL A STRUCTURE NO. 016-W004**

SCALE: NONE SHEET NO. SA2 OF SA8 SHEETS

F.A.U. RTE.	SECTION	COUNTY	TOTAL SHEETS	SHEET NO.
2746	1616B	COOK	404	330
CONTRACT NO. 60J14			ILLINOIS FED. AID PROJECT	