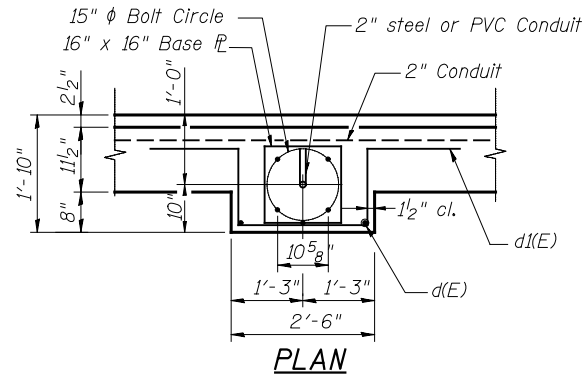
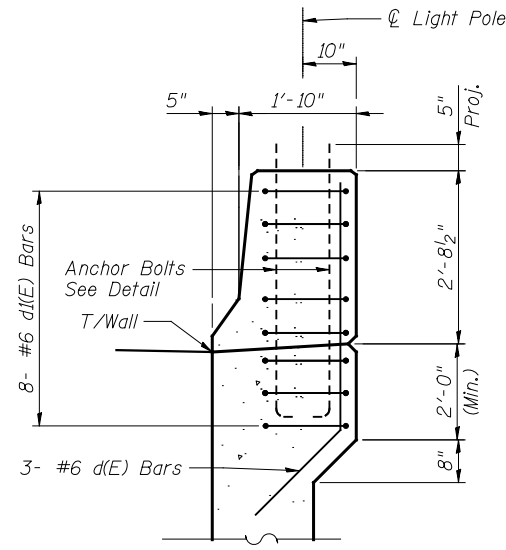


BILL OF MATERIAL

Bar	No.	Size	Length	Shape
d(E)	15	#6	6'-6"	
d1(E)	40	#6	8'-11"	
h2(E)	146	#4	29'-8"	
h3(E)	270	#4	32'-3"	
h4(E)	20	#4	16'-4"	
h5(E)	2	#4	20'-7"	
h6(E)	2	#4	13'-2"	
n(E)	617	#6	7'-4"	
n1(E)	617	#4	5'-9"	
t(E)	1234	#6	5'-11"	
u(E)	20	#4	7'-0"	
w(E)	7	#4	5'-2"	
w1(E)	7	#4	6'-0"	
w2(E)	280	#4	32'-1"	
w3(E)	14	#4	16'-6"	
v(E)	347	#6	7'-9"	
v1(E)	120	#6	8'-9"	
v2(E)	90	#6	9'-8"	
v3(E)	60	#6	10'-8"	
v4(E)	317	#4	7'-8"	
v5(E)	150	#4	8'-7"	
v6(E)	90	#4	9'-11"	
v7(E)	60	#4	10'-11"	
Removal of Existing Structures	L. Sum		1	
Structure Excavation	Cu. Yd.		1,089	
Concrete Structures	Cu. Yd.		561.6	
Protective Coat	Sq. Yd.		272	
Reinforcement Bars, Epoxy Coated	Pound		47,490	
Geocomposite Wall Drain	Sq. Yd.		341	
Porous Granular Embankment, Special	Cu. Yd.		227	
Pipe Underdrains for Structures, 4"	Foot		620	



PLAN



SECTION

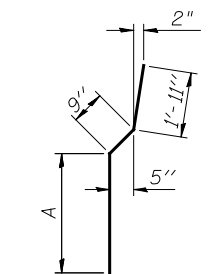
Notes:

1. For light pole locations and details, see Lighting Plans.
2. Cost of anchor bolts, nuts, washers, lighting conduit and expansion couplings is included in Concrete Structures.

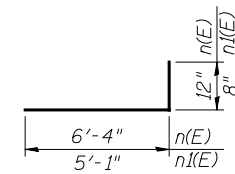
LIGHT POLE MOUNTING DETAILS

MINIMUM LAP

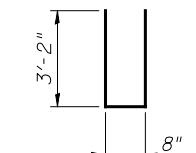
- #4 Bars = 2'-1"
- #6 Bars = 3'-1"



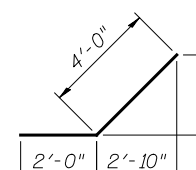
BAR v(E) THRU v3(E)



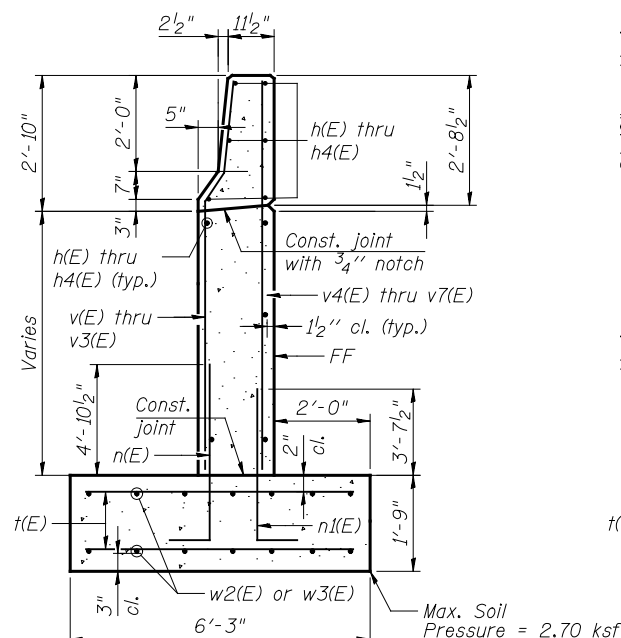
BARS n(E) & n1(E)



BAR u(E)

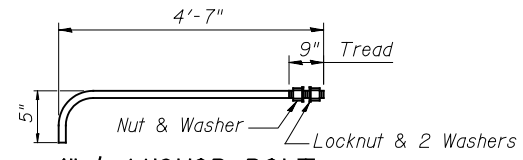


BAR w(E)

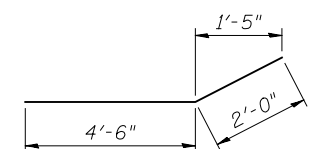


SECTION THRU WALL

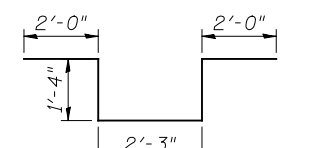
(Typical)



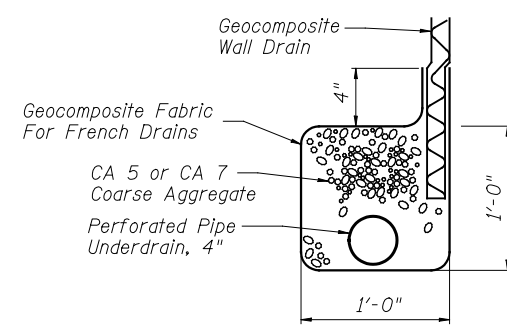
1" ANCHOR BOLT
Full Length Hot Dipped Galvanized (ASTM F 1554 Grade 105)



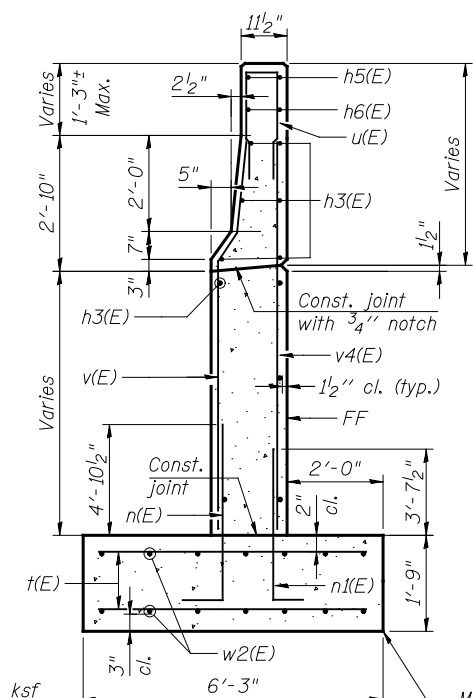
BAR d1(E)



BAR d(E)

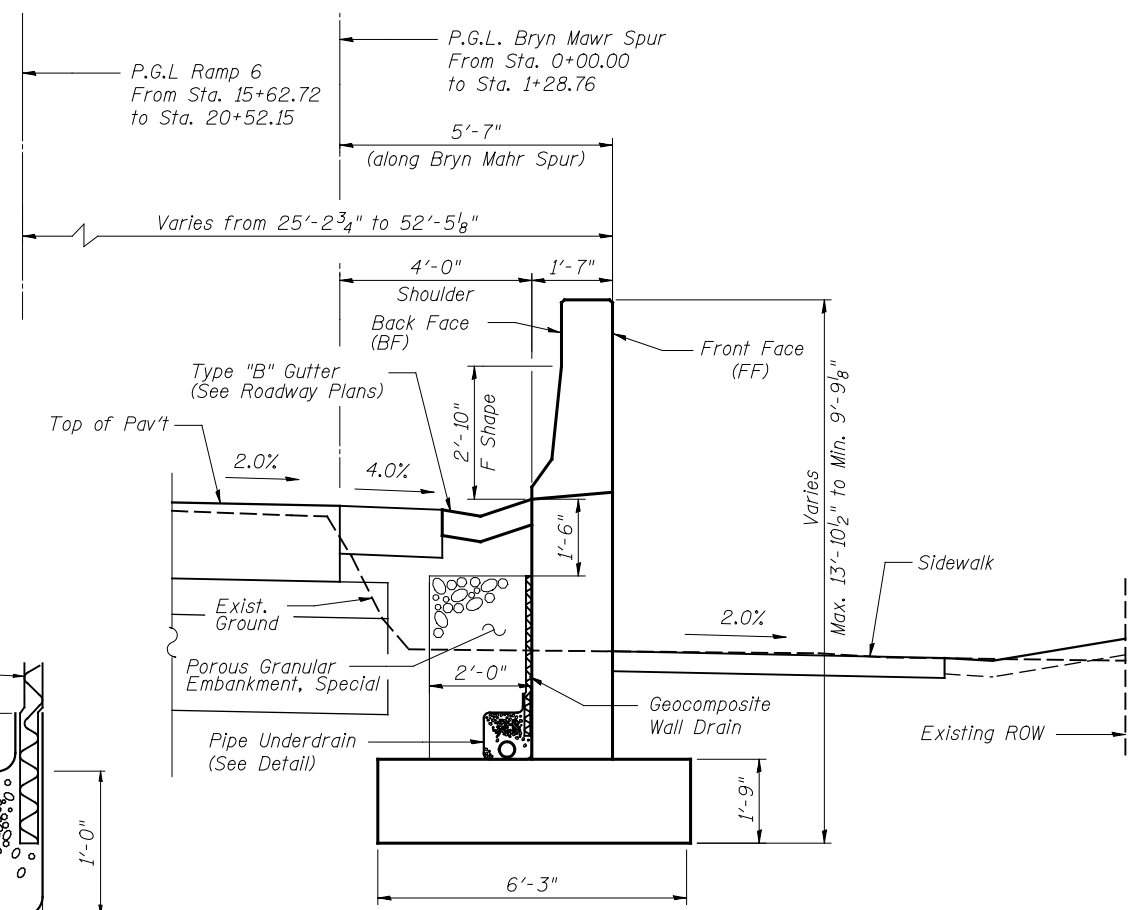


PIPE UNDERDRAIN DETAIL

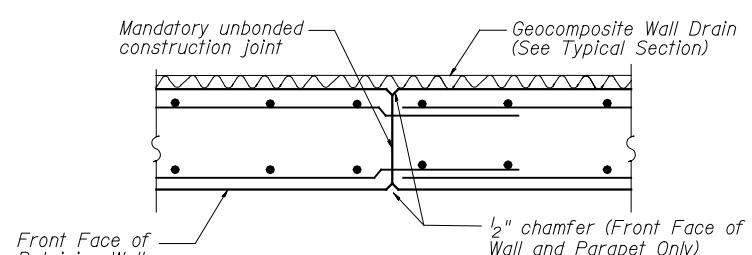


SECTION THRU WALL

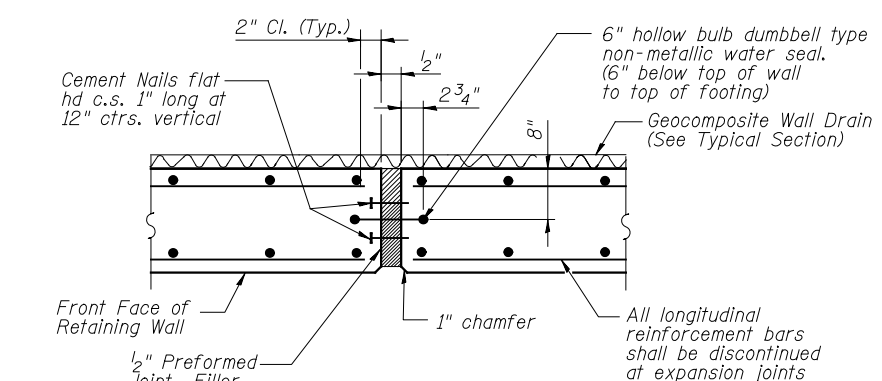
(Sta. 15+62.72 to 15+82.68 Ramp 6)



CROSS SECTION OF ROADWAY AND WALL



CONSTRUCTION JOINT DETAIL



EXPANSION JOINT DETAIL

DIM A

Bar	A
v(E)	5'-1"
v1(E)	6'-0"
v2(E)	7'-0"
v3(E)	8'-0"