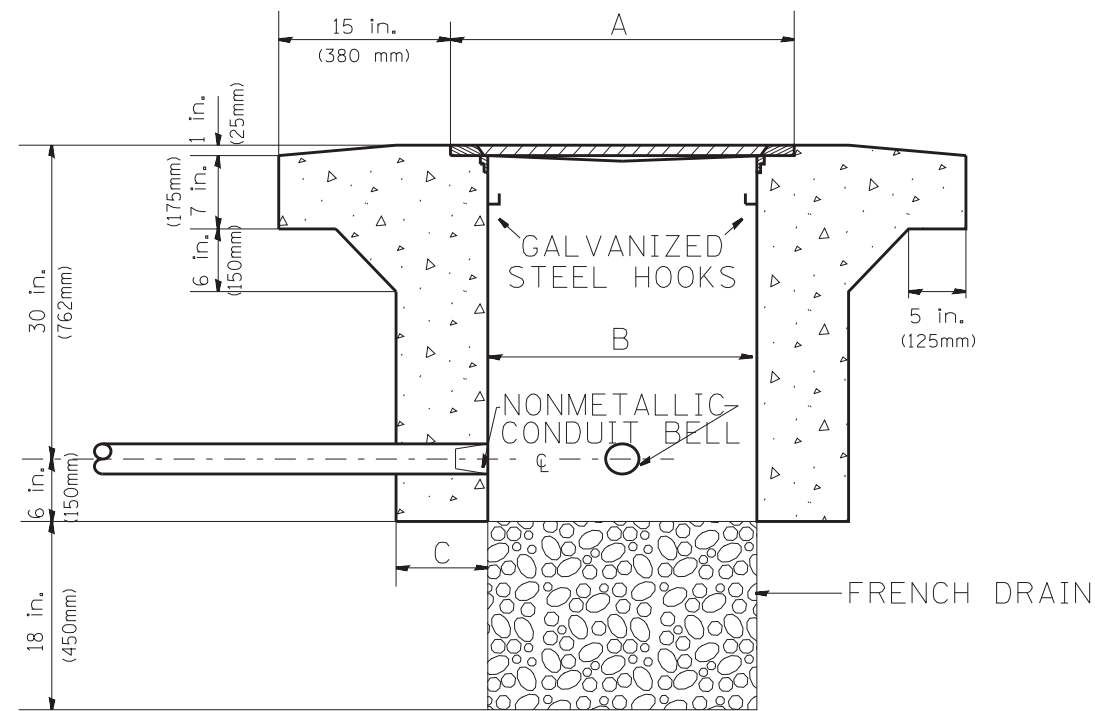


PLAN



ELEVATION

PC CONCRETE - HEAVY DUTY HAND HOLE

HEAVY DUTY HANDHOLE MINIMUM DIMENSIONS (UNHINGED)

A	28" (711 mm)
B	22" (559 mm)
C	8" (200 mm)

(FRAME AND COVER 260 LBS. (118 Kg.) MIN.)

HEAVY DUTY HANDHOLE SPECIAL MINIMUM DIMENSIONS

A	31.5" (800 mm)
B	30.0" (762 mm)
C	10.0" (250 mm)

(FRAME AND COVER 405 LBS. (184 Kg. (405))

FILE NAME =	USER NAME = mezag	DESIGNED - R.L.	REVISED - 04/97	STATE OF ILLINOIS DEPARTMENT OF TRANSPORTATION TRAFFIC SYSTEMS CENTER	PC CONCRETE - HEAVY DUTY HAND HOLE			F.A. RTÉ.	SECTION	COUNTY	TOTAL SHEETS	SHEET NO.	
et:\pw\work\pidot\mezag\d0287541\TSCYP.dgn		DRAWN - G.M.	REVISED -		SCALE: NONE	SHEET NO.	OF SHEETS	STA.	TO STA.			404	361
PLOT SCALE = 100.0000' / in.		CHECKED - R.L.	REVISED -		CONTRACT NO.			FED. ROAD DIST. NO.		ILLINOIS FED. AID PROJECT			
PLOT DATE = 7/26/2012		DATE - 09/11/96	REVISED -		TRAFFIC SYSTEMS CENTER (TY-1TSC-400#15)								