

BILL OF MATERIAL

Bar	No.	Size	Length	
d70(E)	16	#5	5'-6"	
d71(E)	14	#5	8'-3"	
h70(E)	80	#5	32'-11"	
h71(E)	20	#5	29'-8"	
h72(E)	20	#5	26'-0"	
h73(E)	20	#5	24'-4"	
v70(E)	468	#5	6'-1"	
u70(E)	436	#5	4'-10"	
Structure Excavation			Cu. Yd.	411
Concrete Structures			Cu. Yd.	240.2
Form Liner Textured Surface			Sq. Ft.	8,933
Reinforcement Bars, Epoxy Coated			Pound	9,800
Permanent Sheet Piling			Foot	10,677
Ornamental Railing			Foot	511

Bars indicated thus 3x2-#5 h10(E) etc. Indicates 3 lines of bars with 2 lengths per line.

NOTES:

Wall stations, offsets and dimensions are measured at front face of wall.

All exposed corners shall have a 1" chamfer.

For General Notes, Wall Key Plan and US 45 Profile, see Sheet 1.

For Typical Wall Details and Ornamental Railing see Sheet 2.

The details for the concrete cap, reinforcement and required number of shear stud connectors are based on Section AZ 18 sheet piling. If the Contractor chooses to use any other section, then the Contractor shall submit revised concrete cap and reinforcement configuration for approval by the Engineer. Such changes shall not be cause for additional compensation.

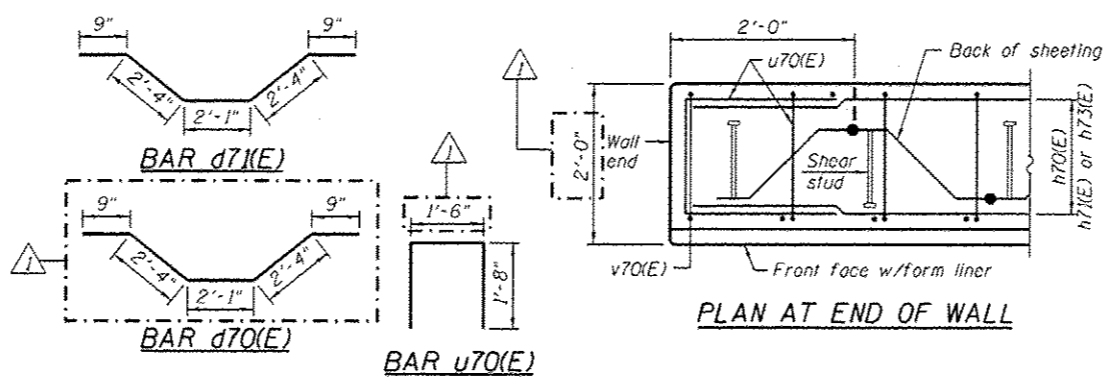
LEGEND

- ① - Panel No.
- ◆ - Soil Boring
- F.F. - Front Face
- B.F. - Back Face
- E.F. - Each Face

BAR LAPS

Basic Lap
#5 bars - 2'-7"

Top Bar Lap
#5 bars - 2'-11"



URS
800 S. WACKER DR.
SUITE 500
CHICAGO, IL 60606
TEL (312) 999-0000
FAX (312) 999-4636

FILE NAME = D:\6061-SHT-Wall.07-1.dgn	USER NAME = Patrick.Hannemann	DESIGNED - KMP	REVISED - 04/12/2013 K.M.P.
		CHECKED -	REVISED -
		DRAWN - KMP	REVISED -
		CHECKED -	REVISED -

STATE OF ILLINOIS
DEPARTMENT OF TRANSPORTATION

RETAINING WALL NO. 7 - S.N. 016-2033
STA. 222+56.06 TO 227+25.00
SHEET NO. 7 OF 42 SHEETS

F.A.P. R.T.E. 330	SECTION 103R-4	COUNTY COOK	TOTAL SHEETS 877	SHEET NO. 483
				CONTRACT NO. 60M61
ILLINOIS FED. AID PROJECT				