

TYPICAL SECTION THROUGH WALL

LEGEND

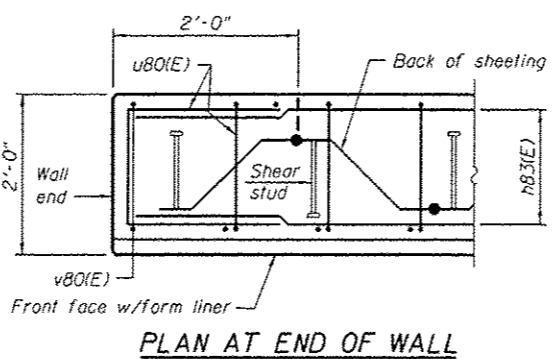
- ① - Panel No.
- ⊕ - Soil Boring
- F.F. - Front Face
- B.F. - Back Face
- E.F. - Each Face

NOTES:

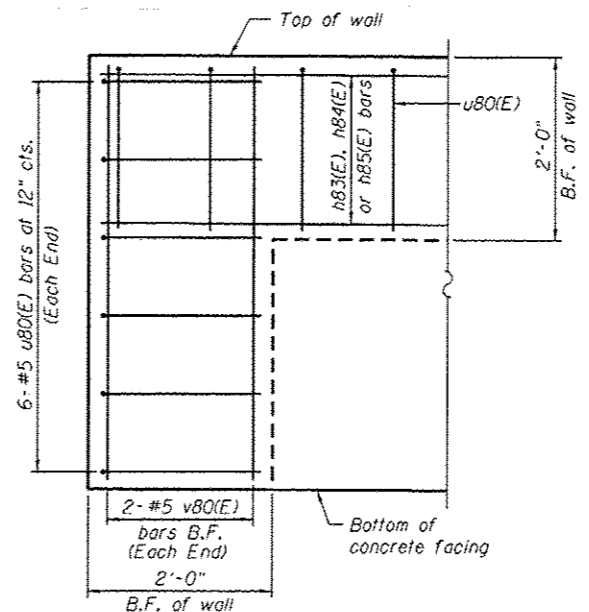
Wall stations, offsets and dimensions are measured at front face of wall.
 All exposed corners shall have a 1" chamfer.
 For General Notes, Wall Key Plan and US 45 Profile, see Sheet 1.
 For Typical Wall Details and Ornamental Railing see Sheet 2.

BAR LAPS

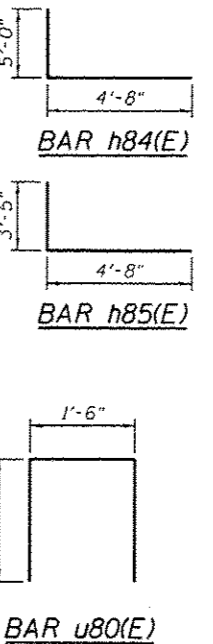
- Basic Lap
#5 bars - 2'-7"
- Top Bar Lap
#5 bars - 2'-11"



PLAN AT END OF WALL



TYPICAL END CAP DETAIL
(v(E) bars in F.F. not shown for clarity)



BILL OF MATERIAL

Bar	No.	Size	Length	Shape
h80(E)	27	#5	32'-11"	—
h81(E)	9	#5	29'-8"	—
h82(E)	9	#5	22'-5"	—
h83(E)	9	#5	19'-1"	—
h84(E)	6	#5	9'-8"	—
h85(E)	3	#5	8'-1"	—
u80(E)	163	#5	4'-10"	Π
v80(E)	157	#5	5'-0"	—
Structure Excavation		Cu. Yd.	109	
Concrete Structures		Cu. Yd.	55.5	
Form Liner Textured Surface		Sq. Ft.	761	
Reinforcement Bars, Epoxy Coated		Pound	3,330	
Permanent Sheet Piling		Sq. Ft.	2,831	
Ornamental Railing		Foot	165	

Bars indicated thus 9x2-#5 etc. indicates 9 lines of bars with 2 lengths per line.

Entire sheet revised

URS
 600 S. WACKER DR.
 SUITE 500
 CHICAGO, IL 60606
 TEL 312-939-0000
 FAX 312-939-0998