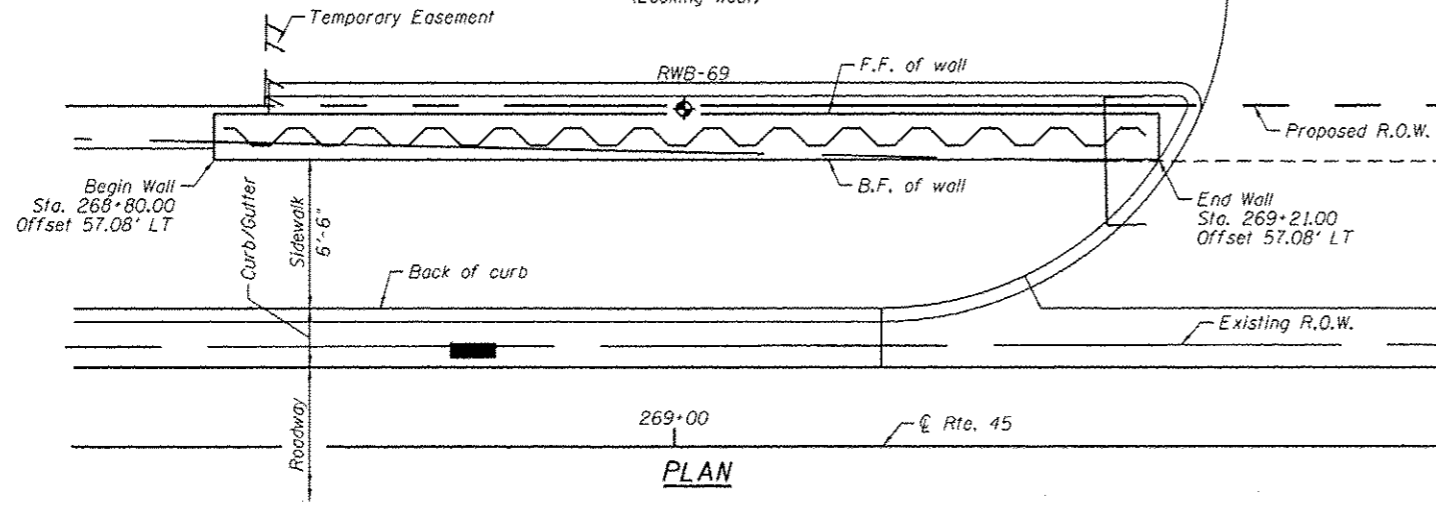


ELEVATION
(Looking West)



PLAN

NOTES:

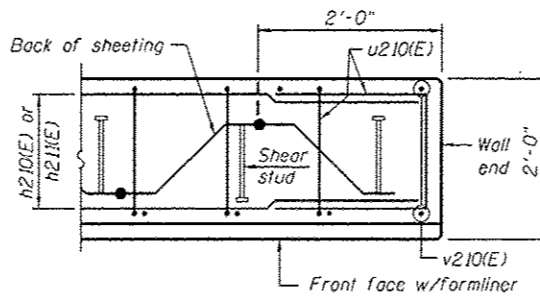
Wall stations, offsets and dimensions are measured at front face of wall.
All exposed corners shall have a 1" chamfer.
For General Notes, Wall Key Plan and US 45 Profile, see Sheet 1.
For Typical Wall Details and Ornamental Rolling see Sheet 2.

LEGEND

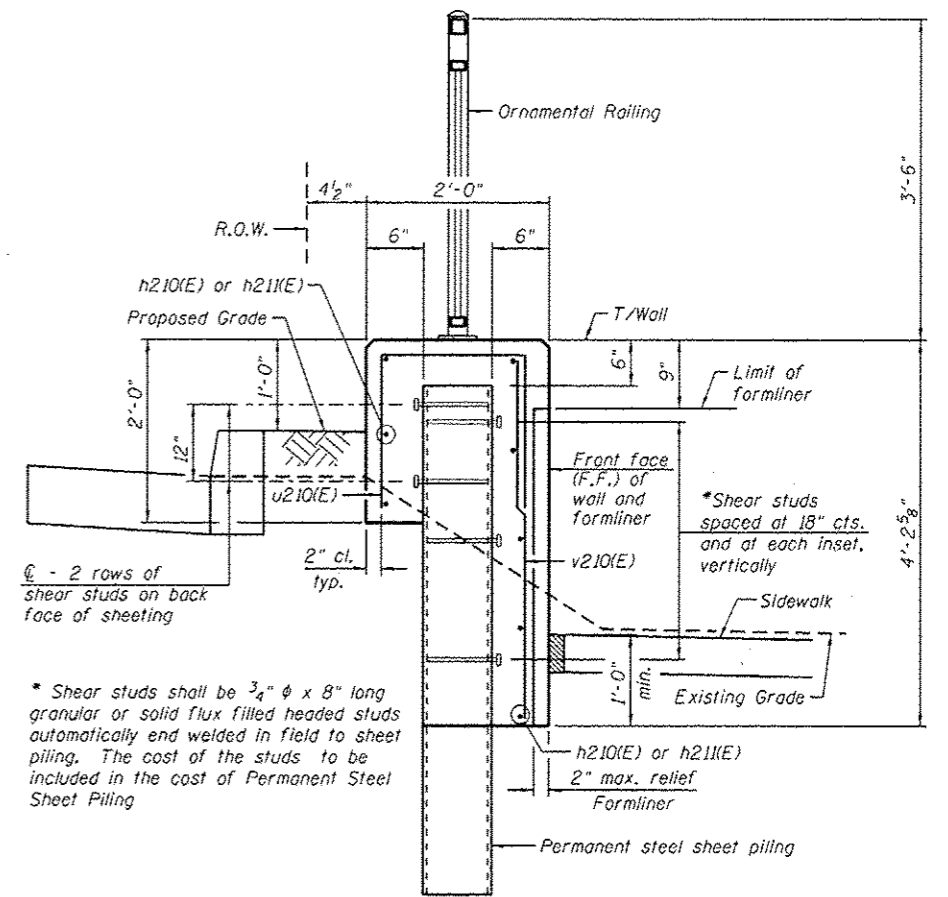
- ① = Panel No.
- ◆ = Soil Boring
- F.F. = Front Face
- B.F. = Back Face
- E.F. = Each Face

BAR LAPS

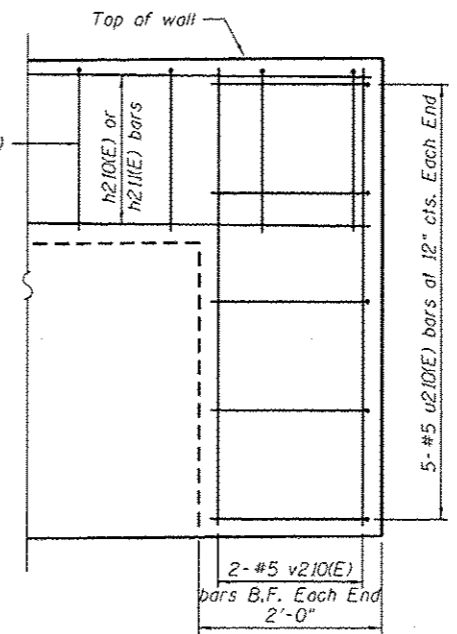
- Basic Lap
- #5 bars - 2'-7"
- Top Bar Lap
- #5 bars - 2'-11"



PLAN AT END OF WALL



TYPICAL SECTION THROUGH WALL



TYPICAL END CAP DETAIL
(v210(E) bars in F.F. not shown for clarity)

BAR u210(E)

BILL OF MATERIAL

Bar	No.	Size	Length	Shape
h210(E)	8	#5	32'-11"	—
h211(E)	8	#5	10'-8"	—
u210(E)	53	#5	4'-10"	⌈
v210(E)	47	#5	3'-10"	—
Structure Excavation			Cu. Yd.	20
Concrete Structures			Cu. Yd.	11.3
Form Liner Textured Surface			Sq. Ft.	137
Reinforcement Bars, Epoxy Coated			Pound	820
Permanent Sheet Piling			Sq. Ft.	535
Ornamental Rolling			Foot	41

URS
 100 S. Wacker Dr.
 Suite 500
 Chicago, IL 60606
 TEL (312) 939-1000
 FAX (312) 939-4038

FILE NAME: 0160M(1)-SHT-Wall_21-1.dgn	USER NAME: Patrick.Hannemann	DESIGNED: KMP	REVISED: 04/12/2013 K.M.P.
		CHECKED: -	REVISED: -
		DRAWN: KMP	REVISED: -
		CHECKED: -	REVISED: -

STATE OF ILLINOIS
DEPARTMENT OF TRANSPORTATION

RETAINING WALL NO. 21 - S.N. 016-Z047
STA. 268 + 80.00 TO 269 + 21.00

SHEET NO. 20 OF 42 SHEETS

F.A.P. RTE. 330	SECTION 103R-4	COUNTY COOK	TOTAL SHEETS 877	SHEET NO. 496
CONTRACT NO. 60M61				ILLINOIS FED. AID PROJECT