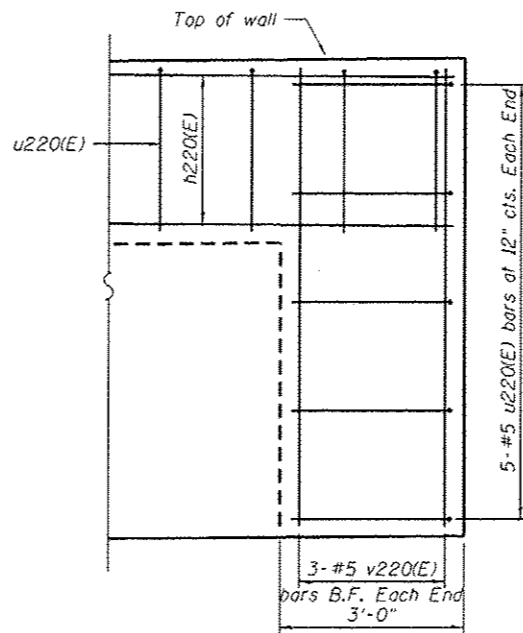
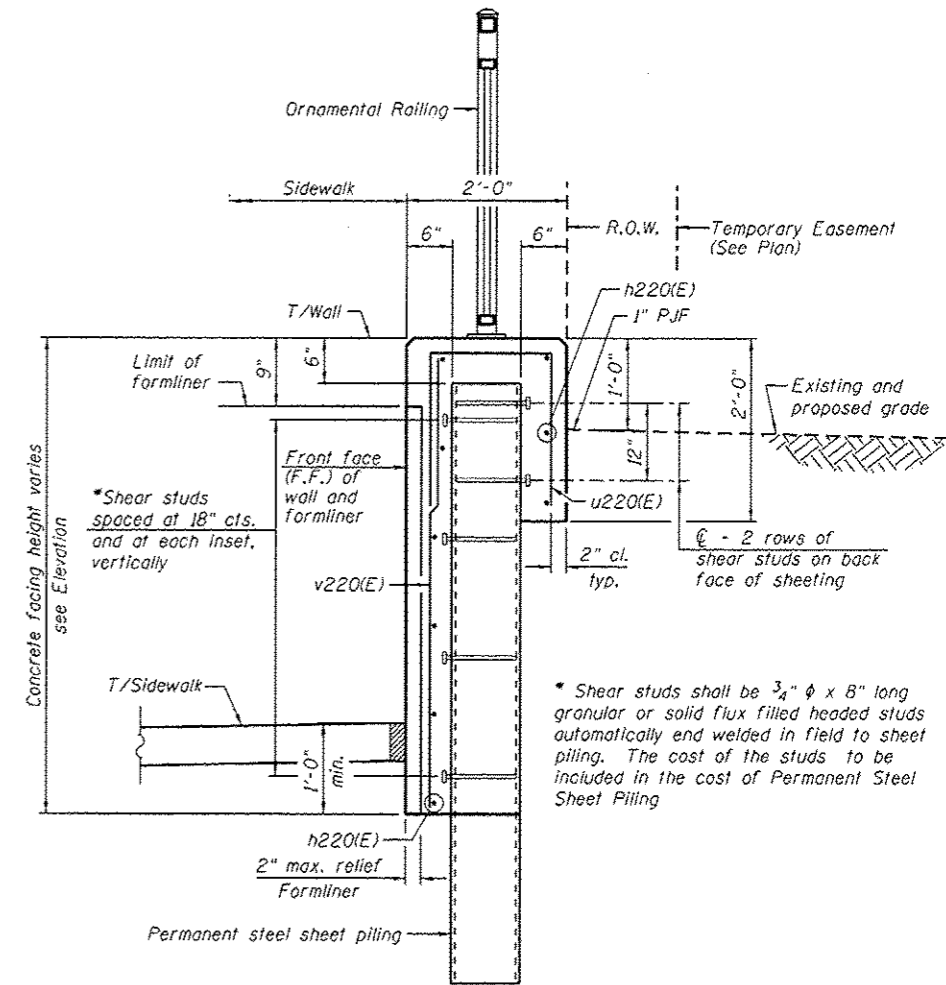


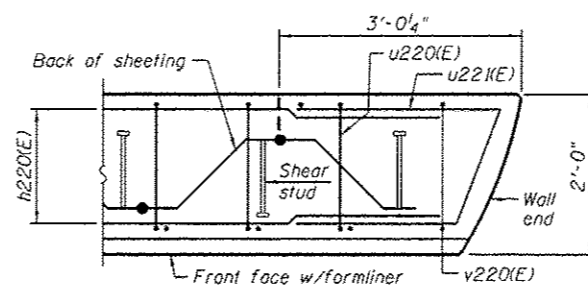
ELEVATION
(Looking West)



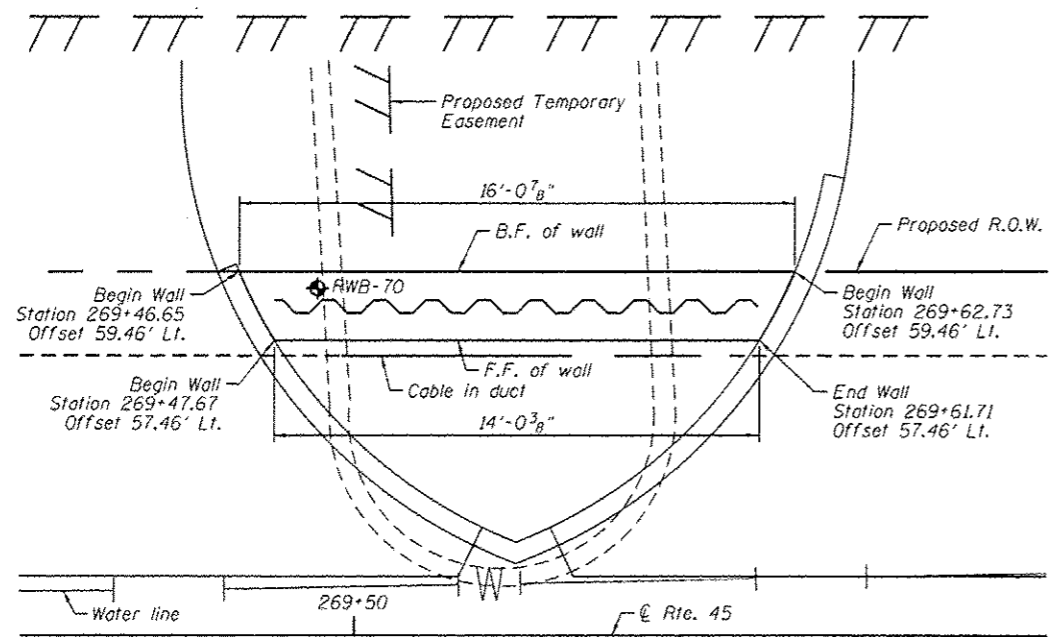
TYPICAL END CAP DETAIL
(v220(E) bars in F.F. not shown for clarity)



TYPICAL SECTION THROUGH WALL



PLAN AT END OF WALL



PLAN

LEGEND

- ◆ = Soil Boring
- F.F. = Front Face
- B.F. = Back Face
- E.F. = Each Face

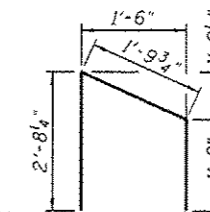
BAR LAPS

Basic Lap	Top Bar Lap
#5 bars - 2'-7"	#5 bars - 2'-11"

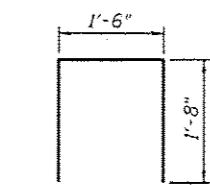
▲ Entire sheet revised

NOTES:

Wall stations, offsets and dimensions are measured at front face of wall. All exposed corners shall have a 1" chamfer.
For General Notes, Wall Key Plan and US 45 Profile, see Sheet 1.
For Typical Wall Details and Ornamental Railing see Sheet 2.



BAR u220(E)



BAR u220(E)

BILL OF MATERIAL

Bar	No.	Size	Length	Shape
h220(E)	8	#5	13'-8"	—
u220(E)	15	#5	4'-10"	□
u220(E)	10	#5	6'-2"	□
v220(E)	21	#5	4'-3"	—
Structure Excavation			Cu. Yd.	11
Concrete Structures			Cu. Yd.	3.2
Form Liner Textured Surface			Sq. Ft.	53
Reinforcement Bars, Epoxy Coated			Pound	350
Permanent Sheet Piling			Sq. Ft.	198
Ornamental Railing			Foot	16

URS
 100 S. WACKER DR.
 SUITE 500
 CHICAGO, IL 60606
 TEL: (312) 959-0000
 FAX: (312) 959-4588

FILE NAME =	USER NAME = Patrick.Hannemann	DESIGNED = KMP	REVISED = 04/12/2013 K.M.P.
DIGMGI-SHT-Wall.22-1.dgn		CHECKED =	REVISED =
		DRAWN = KMP	REVISED =
		CHECKED =	REVISED =

STATE OF ILLINOIS
DEPARTMENT OF TRANSPORTATION

RETAINING WALL NO. 22 - S.N. 016-Z048
STA. 269 + 47.67 TO 269 + 61.71

SHEET NO. 21 OF 42 SHEETS

F.A.P. RTE.	SECTION	COUNTY	TOTAL SHEETS	SHEET NO.
330	103R-4	COOK	877	497
CONTRACT NO. 60M61			ILLINOIS FED. AID PROJECT	