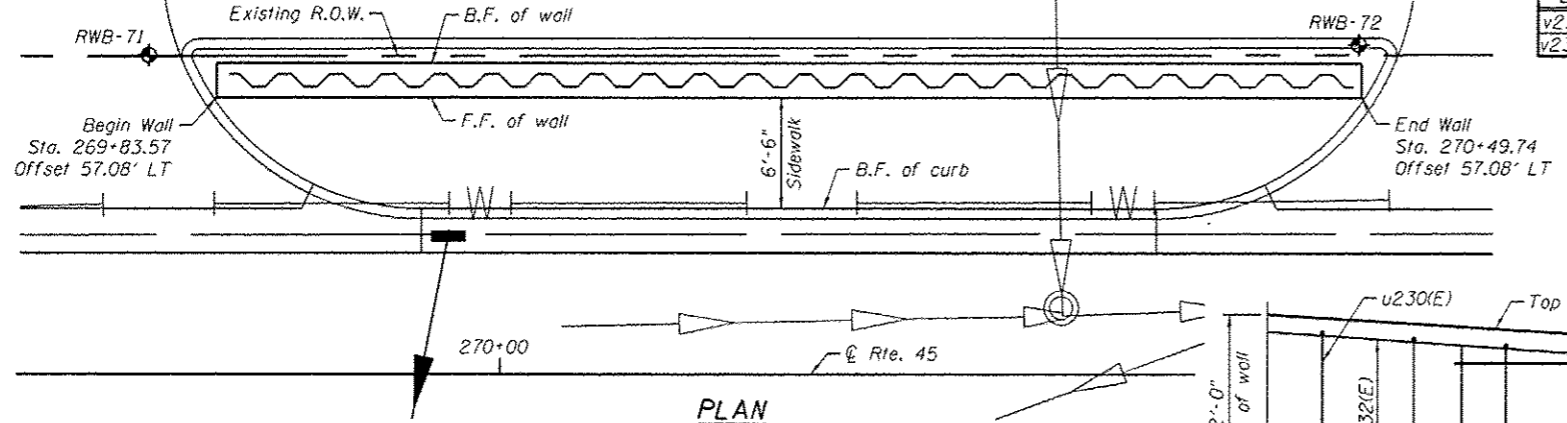


ELEVATION
(Looking West)



PLAN

NOTES:

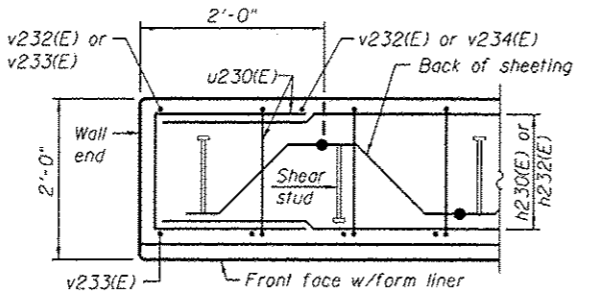
Wall stations, offsets and dimensions are measured at front face of wall.
All exposed corners shall have a 1" chamfer.
For General Notes, Wall Key Plan and US 45 Profile, see Sheet 1.
For Typical Wall Details and Ornamental Railing see Sheet 2.

LEGEND

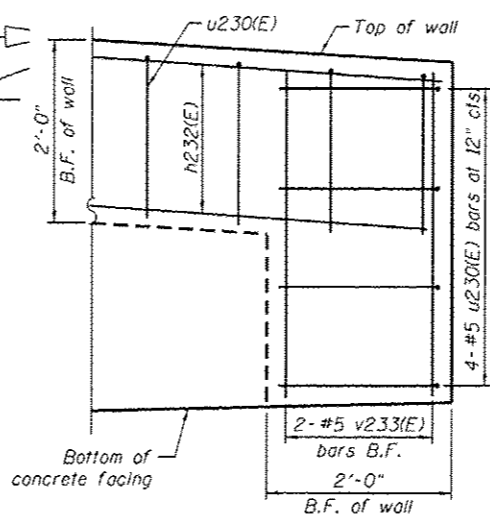
- ① - Panel No.
- ◆ - Soil Boring
- F.F. - Front Face
- B.F. - Back Face
- E.F. - Each Face

BAR LAPS

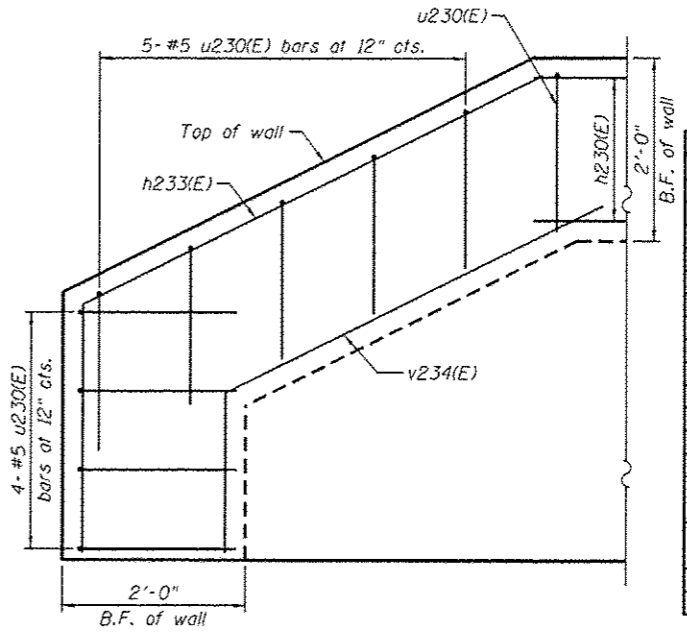
Basic Lap #5 bars - 2'-7"
Top Bar Lap #5 bars - 2'-11"



PLAN AT END OF WALL

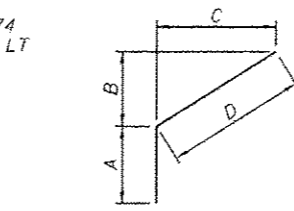


TYPICAL END CAP DETAIL
(v232(E) bars in F.F. not shown for clarity)

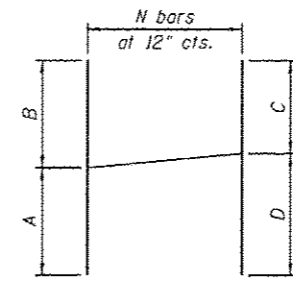


END CAP DETAIL 2
(v230(E) bars in F.F. not shown for clarity)

BAR u230(E)



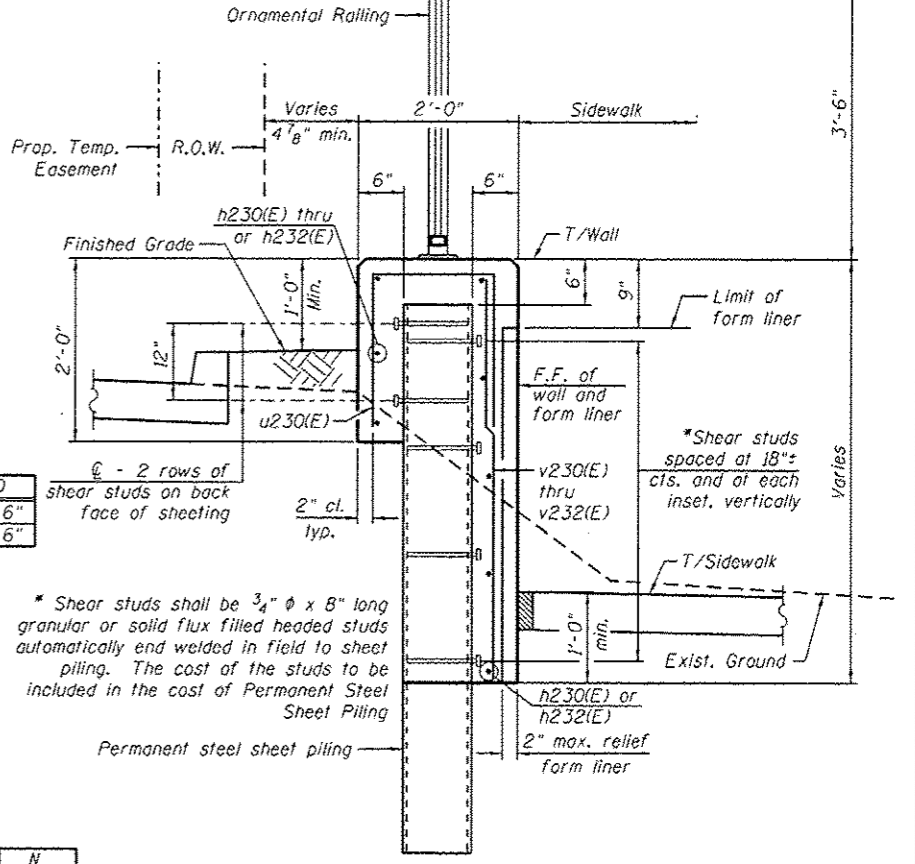
Bar	A	B	C	D
h233(E)	2'-7"	2'-5 1/2"	4'-11"	5'-6"
h234(E)	1'-8"	2'-0 1/8"	4'-0 1/4"	4'-6"



Bar	A	B	C	D	N
v233(E)	4'-2"	5'-1"	4'-7"	4'-8"	13
v232(E)	2'-8"	4'-2"	3'-4"	3'-6"	19

BAR CUTTING DIAGRAM

Order v(E) bars full length. Cut as shown and use all bars in F.F.



TYPICAL SECTION THROUGH WALL

BILL OF MATERIAL

Bar	No.	Size	Length	Shape
h230(E)	7	#5	32'-11"	—
h231(E)	6	#5	21'-0"	—
h232(E)	6	#5	17'-9"	—
h233(E)	1	#5	8'-1"	—
h234(E)	1	#5	6'-2"	—
u230(E)	85	#5	4'-7"	□
v230(E)	6	#5	4'-8"	—
v231(E)	13	#5	9'-3"	—
v232(E)	19	#5	6'-10"	—
Structure Excavation			Cu. Yd.	27
Concrete Structures			Cu. Yd.	18.3
Form Liner Textured Surface			Sq. Ft.	233
Reinforcement Bars, Epoxy Coated			Pound	1200
Permanent Sheet Piling			Sq. Ft.	886
Ornamental Railing			Foot	67

URS
100 S. WACKER DR.
SUITE 500
CHICAGO, IL 60606
TEL (312) 939-0000
FAX (312) 939-9158

FILE NAME : D:\B\MGI-SHT-Wall.23-1.dgn	USER NAME : Patrick.Hennemann	DESIGNED : KMP	REVISED : 04/12/2013 K.M.P.
		CHECKED : -	REVISED : -
		DRAWN : KMP	REVISED : -
		CHECKED : -	REVISED : -
			REVISIONS : -

STATE OF ILLINOIS
DEPARTMENT OF TRANSPORTATION

RETAINING WALL NO. 23 - S.N. 016-2049
STA. 269+83.57 TO 270+49.74
SHEET NO. 22 OF 42 SHEETS

F.A.P. RTE. 330	SECTION 103R-4	COUNTY COOK	TOTAL SHEETS 877	SHEET NO. 498
CONTRACT NO. 60M61			ILLINOIS FED. AID PROJECT	