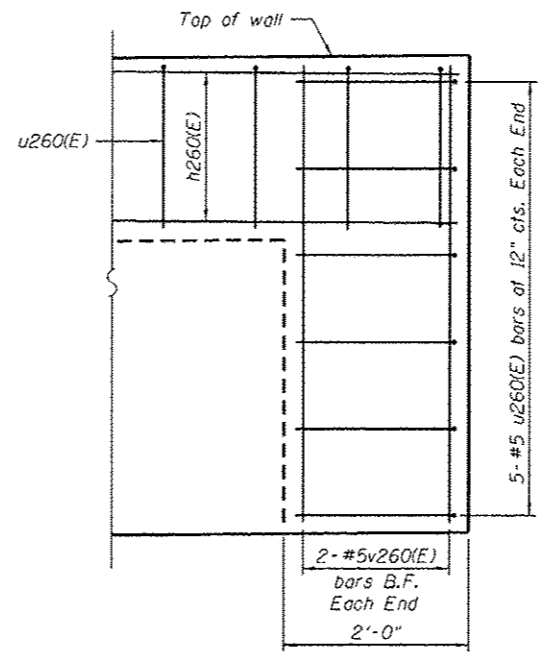
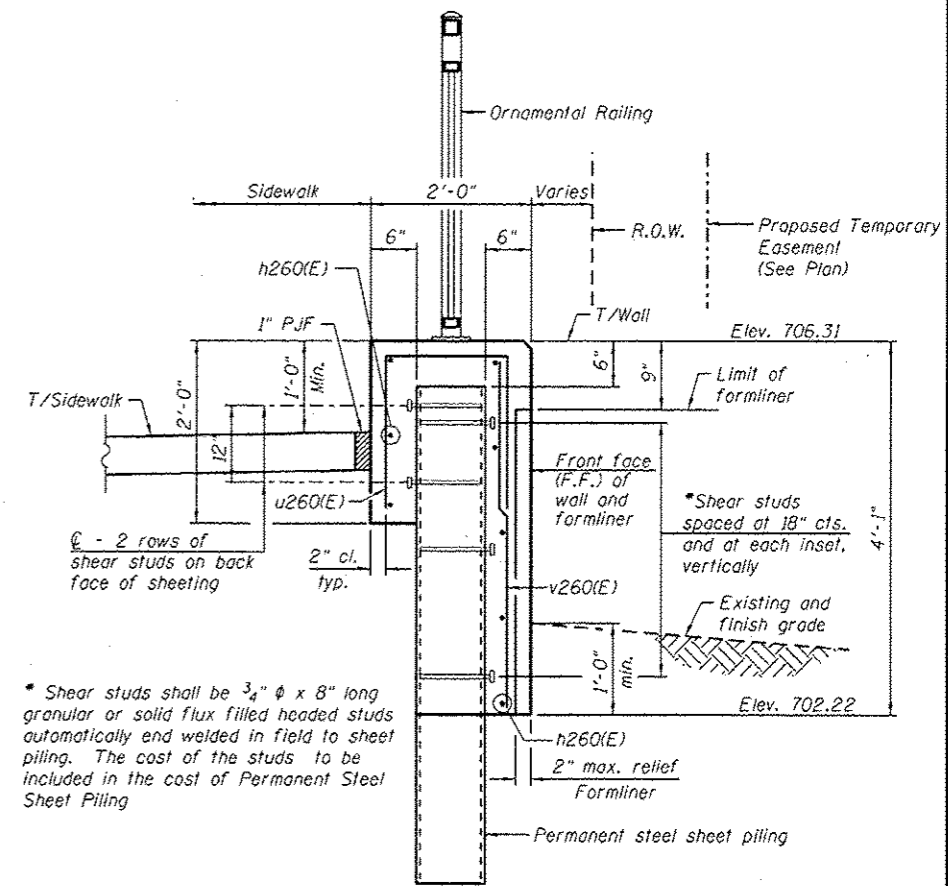


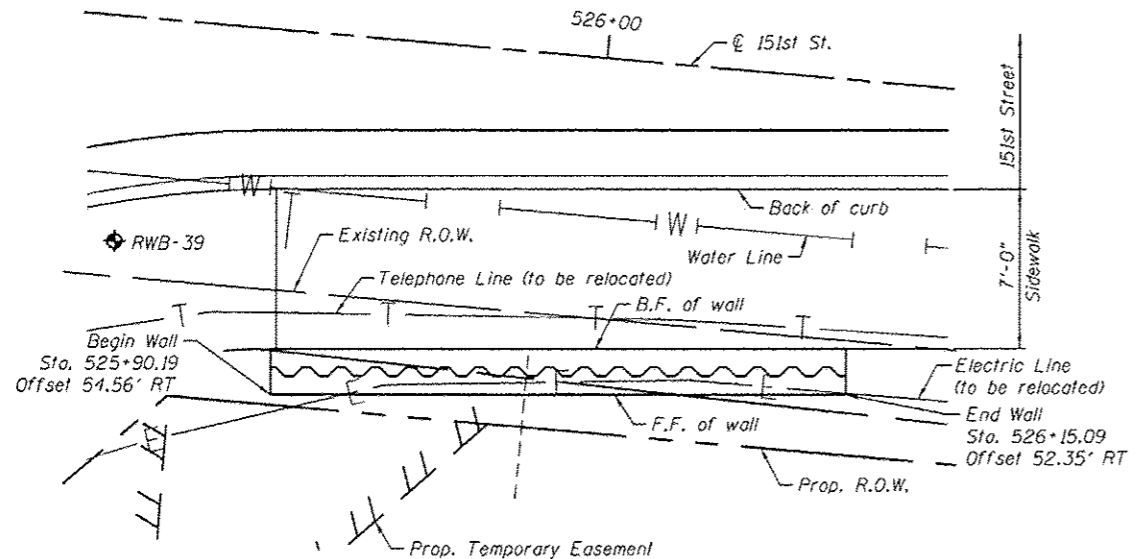
**ELEVATION**



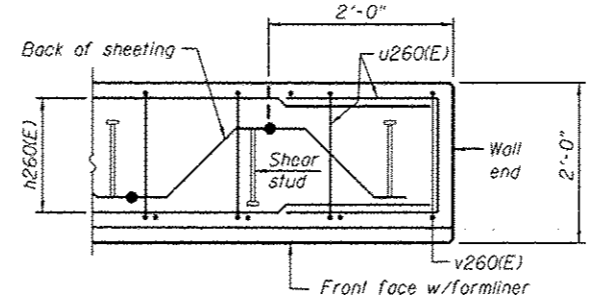
**TYPICAL END CAP DETAIL**  
(v260(E) bars in F.F. not shown for clarity)



**TYPICAL SECTION THROUGH WALL**

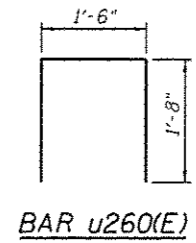


**PLAN**



**PLAN AT END OF WALL**

**NOTES:**  
Wall stations, offsets and dimensions are measured at front face of wall.  
All exposed corners shall have a 1" chamfer.  
For General Notes, Wall Key Plan and US 45 Profile, see Sheet 1.  
For Typical Wall Details and Ornamental Railing see Sheet 2.



**BAR u260(E)**

**BILL OF MATERIAL**

Bar	No.	Size	Length	Shape
h260(E)	8	#5	24'-8"	—
u260(E)	36	#5	4'-10"	□
v260(E)	30	#5	3'-11"	—
Structure Excavation			Cu. Yd.	6
Concrete Structures			Cu. Yd.	6.8
Form Liner Textured Surface			Sq. Ft.	83
Reinforcement Bars, Epoxy Coated			Pound	510
Permanent Sheet Piling			Sq. Ft.	321
Ornamental Railing			Foot	25

**LEGEND**

- ① - Panel No.
- ◆ - Soil Boring
- F.F. - Front Face
- B.F. - Back Face
- E.F. - Each Face

**BAR LAPS**

- Basic Lap  
#5 bars - 2'-7"
- Top Bar Lap  
#5 bars - 2'-11"

▲ Entire sheet revised

URS  
 800 S. WACKER DR.  
 SUITE 500  
 CHICAGO, IL 60606  
 TEL: (312) 871-4000  
 FAX: (312) 939-4000

FILE NAME = DIG6MGI-SHT-Wall.26-1.dgn	USER NAME = Patrick.Hannemann	DESIGNED = KMP	REVISED = 04/12/2013 K.M.P.
		CHECKED =	REVISED =
PLOT SCALE = 8.0000 / 1"		DRAWN = KMP	REVISED =
PLOT DATE = 4/15/2013		CHECKED =	REVISED =

**STATE OF ILLINOIS  
DEPARTMENT OF TRANSPORTATION**

**RETAINING WALL NO. 26 - S.N. 016-2052  
151ST ST. STATION 525 + 90.19 TO 526 + 15.09**

SHEET NO. 25 OF 42 SHEETS

F.A.P. RTE. 330	SECTION 103R-4	COUNTY COOK	TOTAL SHEETS 877	SHEET NO. 501
				CONTRACT NO. 60M61
ILLINOIS FED. AID PROJECT				