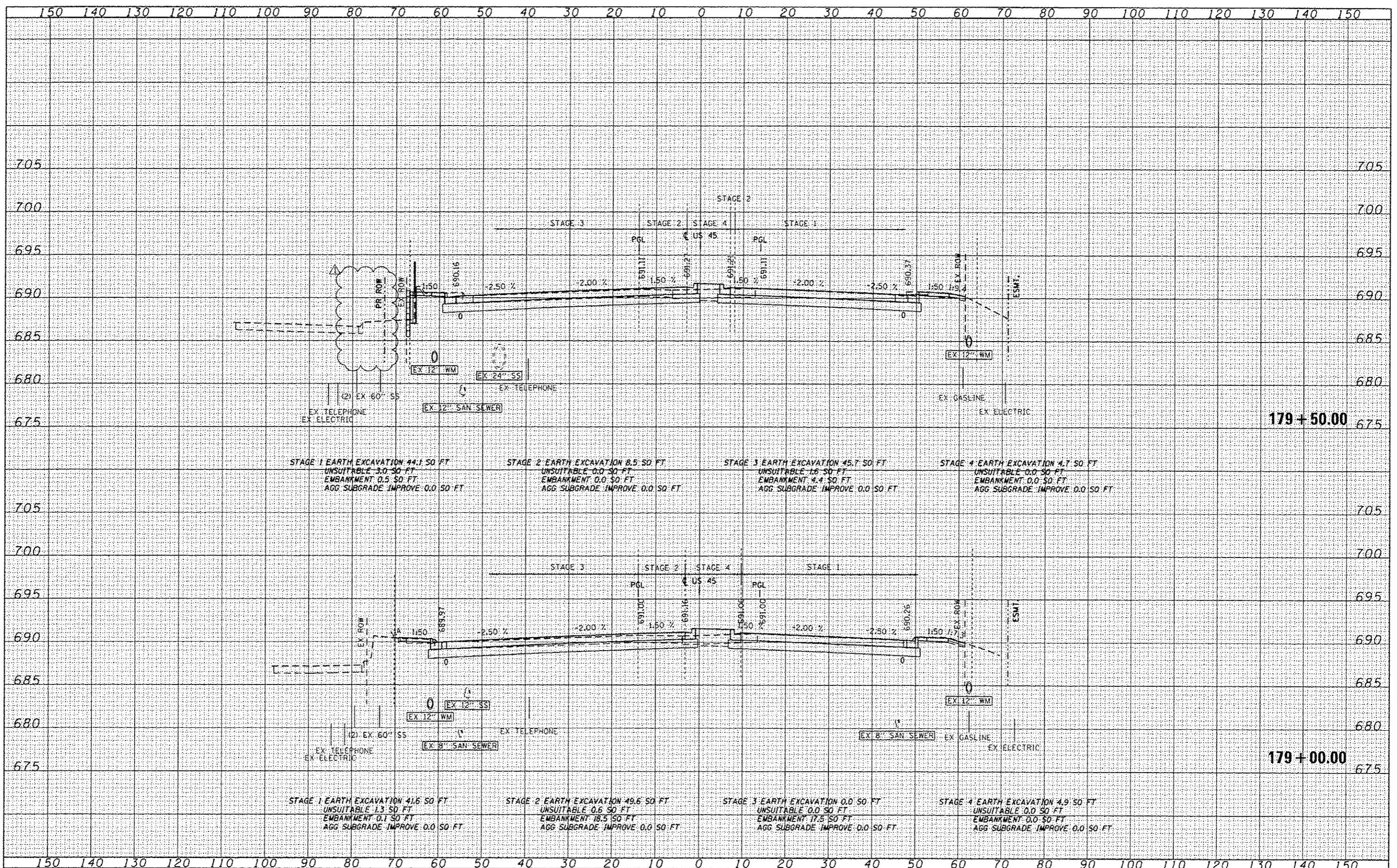


DATE	
BY	
REVISION	
NO. 1	
NO. 2	
NO. 3	
NO. 4	
NO. 5	
NO. 6	
NO. 7	
NO. 8	
NO. 9	
NO. 10	
NO. 11	
NO. 12	
NO. 13	
NO. 14	
NO. 15	
NO. 16	
NO. 17	
NO. 18	
NO. 19	
NO. 20	
NO. 21	
NO. 22	
NO. 23	
NO. 24	
NO. 25	
NO. 26	
NO. 27	
NO. 28	
NO. 29	
NO. 30	
NO. 31	
NO. 32	
NO. 33	
NO. 34	
NO. 35	
NO. 36	
NO. 37	
NO. 38	
NO. 39	
NO. 40	
NO. 41	
NO. 42	
NO. 43	
NO. 44	
NO. 45	
NO. 46	
NO. 47	
NO. 48	
NO. 49	
NO. 50	
NO. 51	
NO. 52	
NO. 53	
NO. 54	
NO. 55	
NO. 56	
NO. 57	
NO. 58	
NO. 59	
NO. 60	
NO. 61	
NO. 62	
NO. 63	
NO. 64	
NO. 65	
NO. 66	
NO. 67	
NO. 68	
NO. 69	
NO. 70	
NO. 71	
NO. 72	
NO. 73	
NO. 74	
NO. 75	
NO. 76	
NO. 77	
NO. 78	
NO. 79	
NO. 80	
NO. 81	
NO. 82	
NO. 83	
NO. 84	
NO. 85	
NO. 86	
NO. 87	
NO. 88	
NO. 89	
NO. 90	
NO. 91	
NO. 92	
NO. 93	
NO. 94	
NO. 95	
NO. 96	
NO. 97	
NO. 98	
NO. 99	
NO. 100	
NO. 101	
NO. 102	
NO. 103	
NO. 104	
NO. 105	
NO. 106	
NO. 107	
NO. 108	
NO. 109	
NO. 110	
NO. 111	
NO. 112	
NO. 113	
NO. 114	
NO. 115	
NO. 116	
NO. 117	
NO. 118	
NO. 119	
NO. 120	
NO. 121	
NO. 122	
NO. 123	
NO. 124	
NO. 125	
NO. 126	
NO. 127	
NO. 128	
NO. 129	
NO. 130	
NO. 131	
NO. 132	
NO. 133	
NO. 134	
NO. 135	
NO. 136	
NO. 137	
NO. 138	
NO. 139	
NO. 140	
NO. 141	
NO. 142	
NO. 143	
NO. 144	
NO. 145	
NO. 146	
NO. 147	
NO. 148	
NO. 149	
NO. 150	

DATE	
BY	
REVISION	
NO. 1	
NO. 2	
NO. 3	
NO. 4	
NO. 5	
NO. 6	
NO. 7	
NO. 8	
NO. 9	
NO. 10	
NO. 11	
NO. 12	
NO. 13	
NO. 14	
NO. 15	
NO. 16	
NO. 17	
NO. 18	
NO. 19	
NO. 20	
NO. 21	
NO. 22	
NO. 23	
NO. 24	
NO. 25	
NO. 26	
NO. 27	
NO. 28	
NO. 29	
NO. 30	
NO. 31	
NO. 32	
NO. 33	
NO. 34	
NO. 35	
NO. 36	
NO. 37	
NO. 38	
NO. 39	
NO. 40	
NO. 41	
NO. 42	
NO. 43	
NO. 44	
NO. 45	
NO. 46	
NO. 47	
NO. 48	
NO. 49	
NO. 50	
NO. 51	
NO. 52	
NO. 53	
NO. 54	
NO. 55	
NO. 56	
NO. 57	
NO. 58	
NO. 59	
NO. 60	
NO. 61	
NO. 62	
NO. 63	
NO. 64	
NO. 65	
NO. 66	
NO. 67	
NO. 68	
NO. 69	
NO. 70	
NO. 71	
NO. 72	
NO. 73	
NO. 74	
NO. 75	
NO. 76	
NO. 77	
NO. 78	
NO. 79	
NO. 80	
NO. 81	
NO. 82	
NO. 83	
NO. 84	
NO. 85	
NO. 86	
NO. 87	
NO. 88	
NO. 89	
NO. 90	
NO. 91	
NO. 92	
NO. 93	
NO. 94	
NO. 95	
NO. 96	
NO. 97	
NO. 98	
NO. 99	
NO. 100	
NO. 101	
NO. 102	
NO. 103	
NO. 104	
NO. 105	
NO. 106	
NO. 107	
NO. 108	
NO. 109	
NO. 110	
NO. 111	
NO. 112	
NO. 113	
NO. 114	
NO. 115	
NO. 116	
NO. 117	
NO. 118	
NO. 119	
NO. 120	
NO. 121	
NO. 122	
NO. 123	
NO. 124	
NO. 125	
NO. 126	
NO. 127	
NO. 128	
NO. 129	
NO. 130	
NO. 131	
NO. 132	
NO. 133	
NO. 134	
NO. 135	
NO. 136	
NO. 137	
NO. 138	
NO. 139	
NO. 140	
NO. 141	
NO. 142	
NO. 143	
NO. 144	
NO. 145	
NO. 146	
NO. 147	
NO. 148	
NO. 149	
NO. 150	

URS  
 400 S. WACKER DR.  
 SUITE 500  
 CHICAGO, IL 60606  
 TEL 312.259.5000  
 FAX 312.259.4158



FILE NAME : DIGR6M61-SHT-K55H101.dgn	USER NAME : jamaa.push	DESIGNED - JCL	REVISED - 04/12/2012	<b>STATE OF ILLINOIS</b> <b>DEPARTMENT OF TRANSPORTATION</b>	<b>US 45 CROSS SECTIONS</b> SCALE: 1"=10'H/1"=5'V SHEET NO. 3 OF 123 SHEETS STA. 179+00.00 TO STA. 179+50.00	F.A.P. RTE. 330	SECTION 103R-4	COUNTY COOK	TOTAL SHEETS 877	SHEET NO. 708
PLOT SCALE : 20,0000 1/1	CHECKED - MJT	REVISIONS	CONTRACT NO. 60MG1							
PLOT DATE : 4/11/2013	DATE - 03/13/2013	REVISIONS	ILLINOIS FED. AID PROJECT							