

STATE OF ILLINOIS  
DEPARTMENT OF TRANSPORTATION  
DIVISION OF HIGHWAYS

**PROPOSED  
HIGHWAY PLANS**

FAP ROUTE 330: US 45 (LAGRANGE ROAD)  
143RD STREET TO 159TH STREET  
SECTION: 103R-4  
PROJECT: NHPP-0330(073)  
ADDITIONAL LANES & RETAINING WALL  
COOK COUNTY  
C-91-145-11

F.A.P. R.T.E.	SECTION	COUNTY	TOTAL SHEETS	SHEET NO.
330	103R-4	COOK	877	1
ILLINOIS CONTRACT NO. 60M61			*877+4 = 881	

D-91-436-12  
D-91-569-08



FOR INDEX OF SHEETS, SEE SHEET NO. 3

PROJECT LOCATED IN VILLAGE OF ORLAND PARK

STATION EQUATIONS:

STA 222+05.40 @ US 45 (LAGRANGE ROAD) = STA 248+55.18 @ US 45 (LAGRANGE ROAD) =  
STA 506+66.80 @ 151ST STREET (WEST) = STA 228+70.01 @ 147TH STREET  
STA 525+00.00 @ 151ST STREET (EAST)  
STA 208+77.39 @ US 45 (LAGRANGE ROAD) = STA 265+09.86 @ US 45 (LAGRANGE ROAD) =  
STA 328+73.28 @ 153RD STREET = STA 178+25.00 @ 144TH PLACE  
STA 235+31.72 @ US 45 (LAGRANGE ROAD) =  
STA 278+83.99 @ 149TH STREET (WEST)

STA 235+32.14 @ US 45 (LAGRANGE ROAD) =  
STA 300+00.00 @ 149TH STREET (EAST)

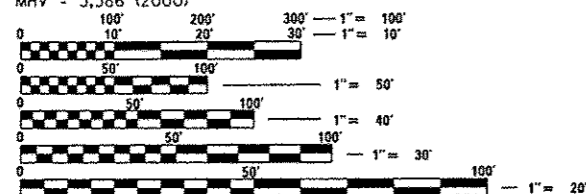
DESIGN DESIGNATION:

US 45 (LAGRANGE ROAD): 2550 (20) OTHER PRINCIPAL ARTERIAL AND STRATEGIC REGIONAL ARTERIAL (SRA) -  
CLASS II TRUCK ROUTE 11.55 (JPCP-30)

153RD STREET: 100 (20) LOCAL 8.68 (FD-20)  
151ST STREET: 600 (20) COLLECTOR 8.68 (FD-20)  
149TH STREET: 100 (20) LOCAL 8.68 (FD-20)  
147TH STREET: 50 (20) LOCAL 8.68 (FD-20)  
144TH PLACE: 100 (20) LOCAL 8.68 (FD-20)

DESIGN TRAFFIC DATA:

US 45 (LAGRANGE ROAD) = 45 MPH  
ADT = 42,000 (2000, 159TH ST TO 151ST ST)  
ADT = 46,000 (2000, 151ST ST TO 143RD ST)  
ADT = 45,000 (2030, 159TH ST TO 151ST ST)  
ADT = 49,000 (2030, 151ST ST TO 143RD ST)  
153RD STREET = 45 MPH  
MHV = 2,789 (2000)  
151ST STREET = 45 MPH  
MHV = 2,782 (2000)  
149TH STREET = 45 MPH  
MHV = 2,603 (2000)  
147TH STREET = 45 MPH  
MHV = 3,418 (2000)  
144TH PLACE = 45 MPH  
MHV = 3,386 (2000)

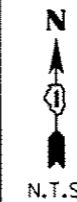
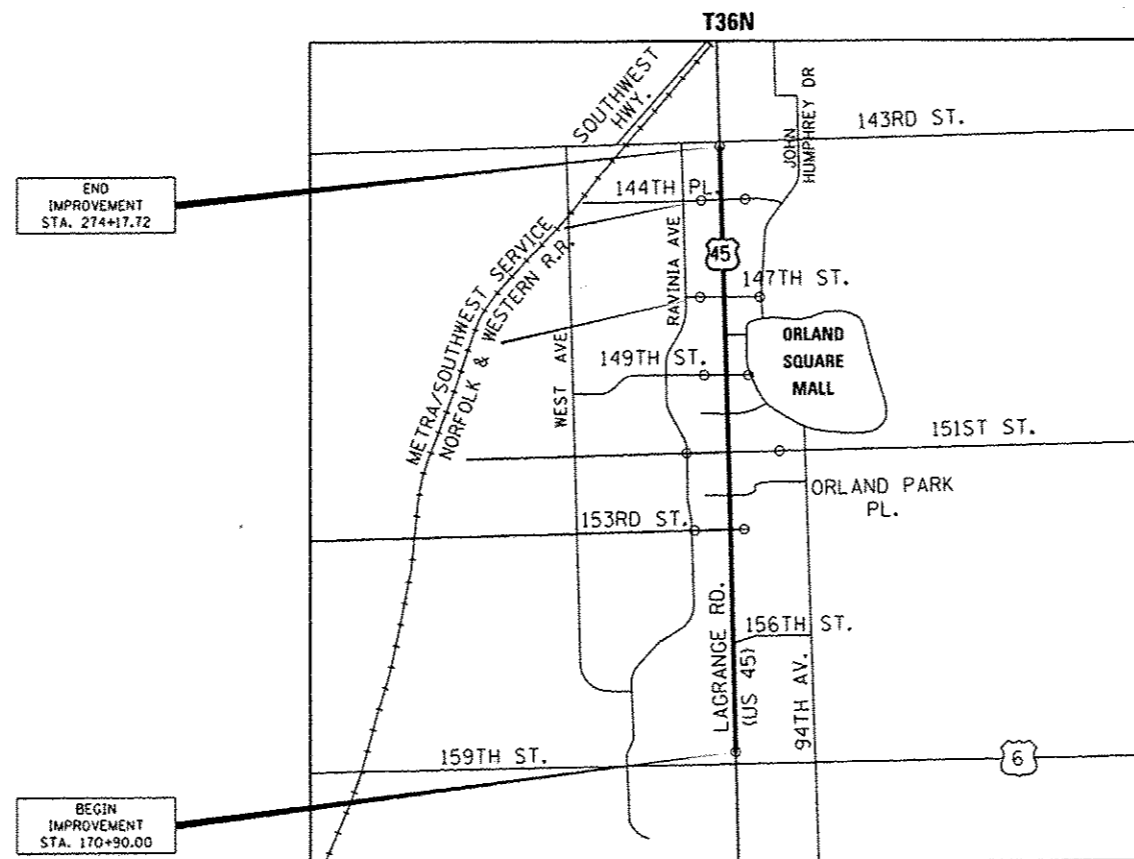


FULL SIZE PLANS HAVE BEEN PREPARED USING STANDARD ENGINEERING SCALES. REDUCED SIZED PLANS WILL NOT CONFORM TO STANDARD SCALES. IN MAKING MEASUREMENTS ON REDUCED PLANS, THE ABOVE SCALES MAY BE USED.

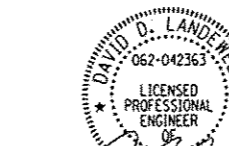
J.U.L.I.E.  
JOINT UTILITY LOCATION INFORMATION FOR EXCAVATION  
1-800-892-0123  
OR 811

PROJECT MANAGER: RAJENDRA SHAH, P.E.  
(847) 705-4555

CONTRACT NO. 60M61



R12E



DAVID D. LANDEWEER, P.E.  
LICENSE NO.: 062-042363  
EXPIRES: NOVEMBER 30, 2013

SEE SHEET 2 FOR APPLICABLE DESIGN SECTION SIGNATURES

STATE OF ILLINOIS  
DEPARTMENT OF TRANSPORTATION  
DIVISION OF HIGHWAYS

SUBMITTED: January 31, 2013  
John Fortman  
DEPUTY DIRECTOR OF HIGHWAYS, REGION ENGINEER

March 22, 2013  
John D. Baranzelli, P.E.  
actg ENGINEER OF DESIGN AND ENVIRONMENT

March 22, 2013  
Omer Osham, P.E.  
DIRECTOR OF HIGHWAYS, CHIEF ENGINEER

PRINTED BY THE AUTHORITY  
OF THE STATE OF ILLINOIS

PLANS PREPARED BY:  
**URS** 100 S. WACKER DR., SUITE 500 TEL (312)-939-1000  
CHICAGO IL, 60606 FAX (312)-939-4198

Rev.

REV 3-19-2013

ORLAND TOWNSHIP  
GROSS LENGTH = 10,327.72 FT. = 1.956 MILE  
NET LENGTH = 10,327.72 FT. = 1.956 MILE