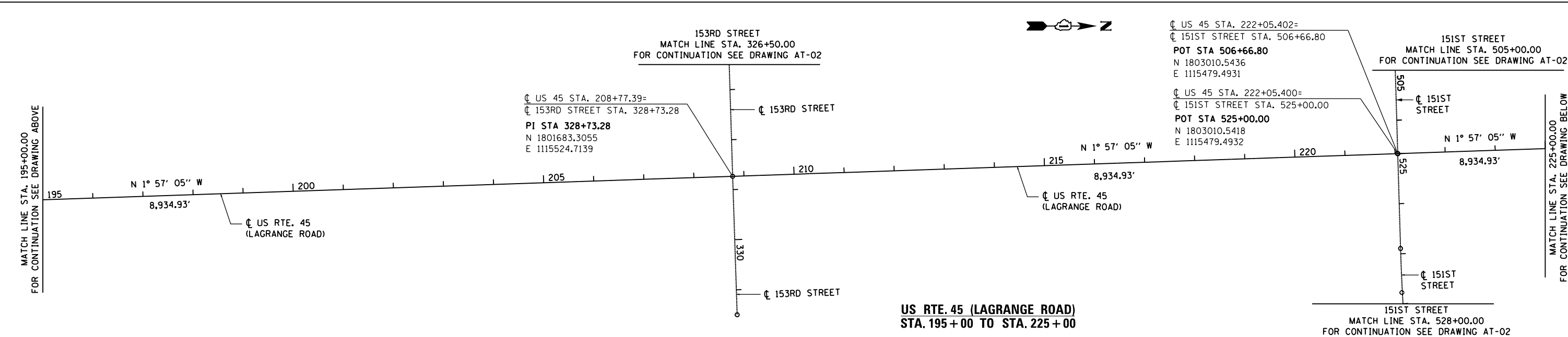
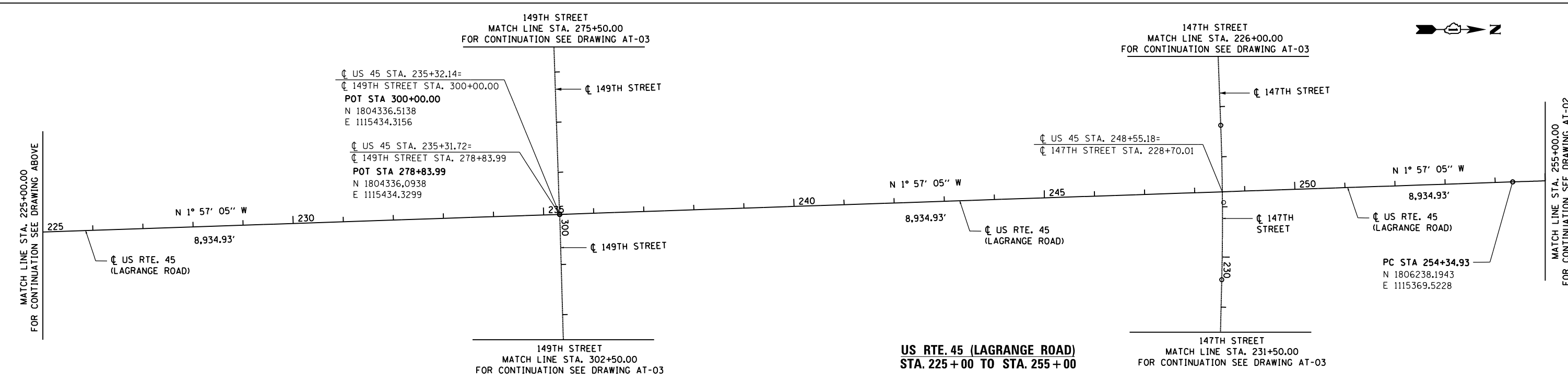


**US RTE. 45 (LAGRANGE ROAD)
STA. 165 + 00 TO STA. 195 + 00**



**US RTE. 45 (LAGRANGE ROAD)
STA. 195 + 00 TO STA. 225 + 00**



**US RTE. 45 (LAGRANGE ROAD)
STA. 225 + 00 TO STA. 255 + 00**

URS
 100 S. WACKER DR.
 SUITE 600
 CHICAGO, IL 60606
 TEL (312) 939-1000
 FAX (312) 939-4998

| | | | |
|-------------------------------------|------------------------------|-------------------|-----------|
| FILE NAME = D160M61-SHT-AT01.dgn | USER NAME = Anthony.Plutz | DESIGNED - BA | REVISED - |
| SHT.PLAN | PLOT SCALE = 200.0000' / in. | DRAWN - BA | REVISED - |
| | PLOT DATE = 3/14/2013 | CHECKED - MJT | REVISED - |
| | | DATE - 03/13/2013 | REVISED - |

**STATE OF ILLINOIS
DEPARTMENT OF TRANSPORTATION**

| ALIGNMENT, TIES AND BENCHMARKS | | | |
|--------------------------------|---------------------|------|---------|
| SCALE: 1"=100' | SHEET 1 OF 3 SHEETS | STA. | TO STA. |

| F.A.P. RTE. | SECTION | COUNTY | TOTAL SHEETS | SHEET NO. |
|---------------------------|---------|--------|--------------------|-----------|
| 330 | 103R-4 | COOK | 877 | 39 |
| AT-01 | | | CONTRACT NO. 60M61 | |
| ILLINOIS FED. AID PROJECT | | | | |