

REMOVAL LEGEND

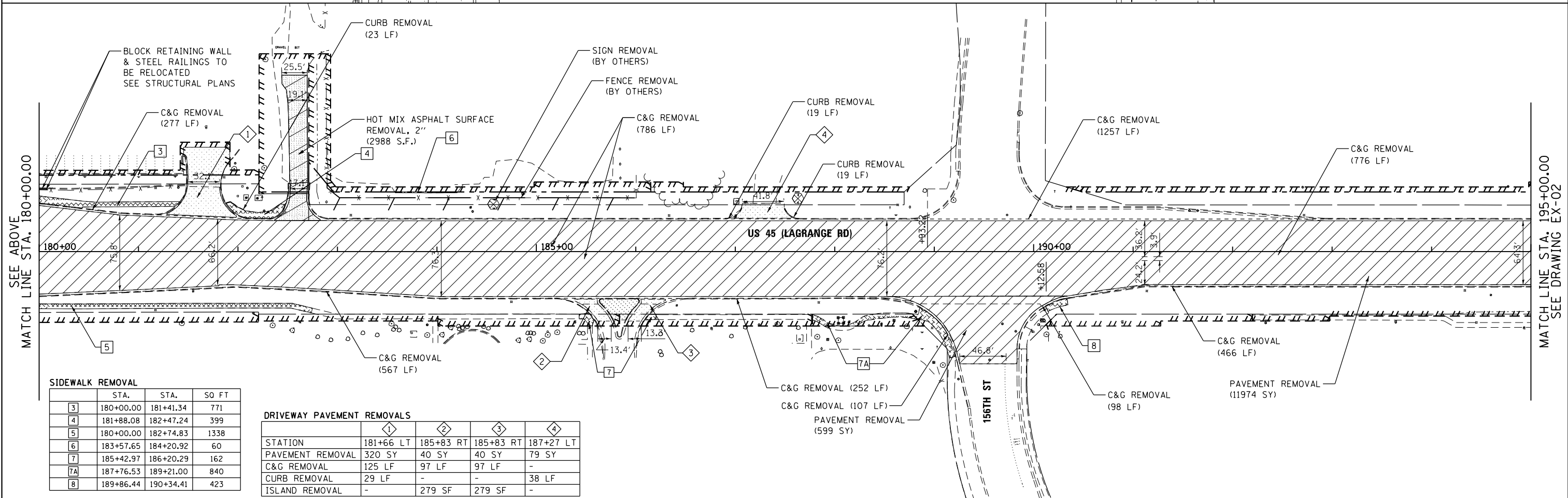
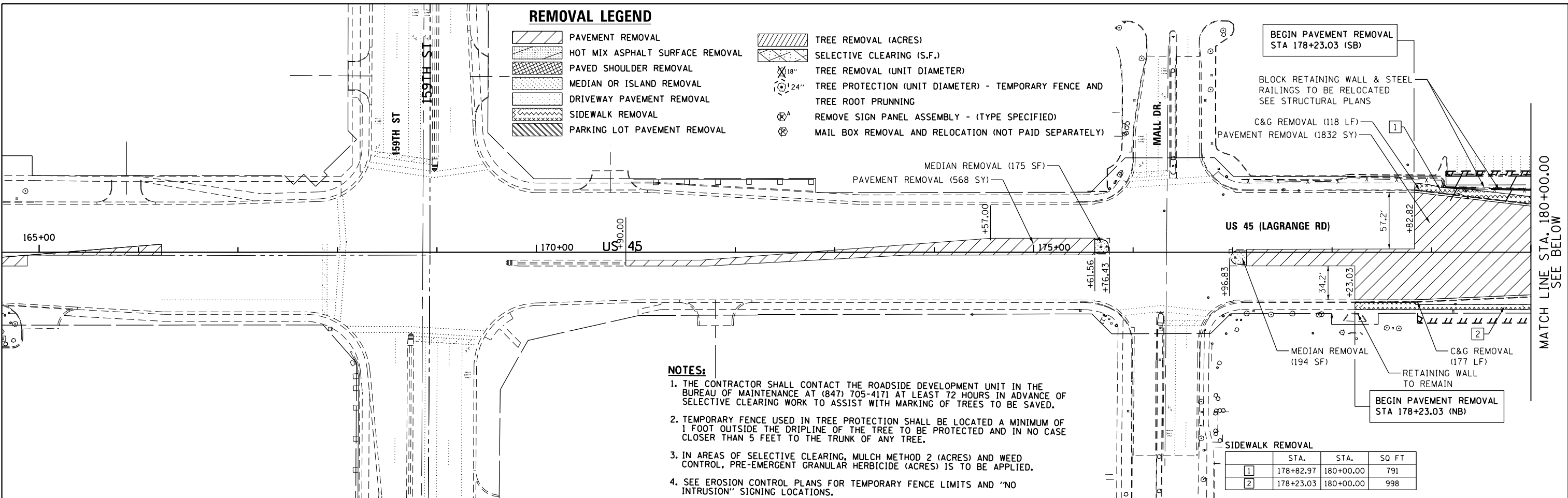
- | | | | |
|--|---------------------------------|--|-------------------------------------------------------------------------|
| | PAVEMENT REMOVAL | | TREE REMOVAL (ACRES) |
| | HOT MIX ASPHALT SURFACE REMOVAL | | SELECTIVE CLEARING (S.F.) |
| | PAVED SHOULDER REMOVAL | | TREE REMOVAL (UNIT DIAMETER) |
| | MEDIAN OR ISLAND REMOVAL | | TREE PROTECTION (UNIT DIAMETER) - TEMPORARY FENCE AND TREE ROOT PRUNING |
| | DRIVEWAY PAVEMENT REMOVAL | | REMOVE SIGN PANEL ASSEMBLY - (TYPE SPECIFIED) |
| | SIDEWALK REMOVAL | | MAIL BOX REMOVAL AND RELOCATION (NOT PAID SEPARATELY) |
| | PARKING LOT PAVEMENT REMOVAL | | |

NOTES:

1. THE CONTRACTOR SHALL CONTACT THE ROADSIDE DEVELOPMENT UNIT IN THE BUREAU OF MAINTENANCE AT (847) 705-4171 AT LEAST 72 HOURS IN ADVANCE OF SELECTIVE CLEARING WORK TO ASSIST WITH MARKING OF TREES TO BE SAVED.
2. TEMPORARY FENCE USED IN TREE PROTECTION SHALL BE LOCATED A MINIMUM OF 1 FOOT OUTSIDE THE DRIPLINE OF THE TREE TO BE PROTECTED AND IN NO CASE CLOSER THAN 5 FEET TO THE TRUNK OF ANY TREE.
3. IN AREAS OF SELECTIVE CLEARING, MULCH METHOD 2 (ACRES) AND WEED CONTROL, PRE-EMERGENT GRANULAR HERBICIDE (ACRES) IS TO BE APPLIED.
4. SEE EROSION CONTROL PLANS FOR TEMPORARY FENCE LIMITS AND "NO INTRUSION" SIGNING LOCATIONS.

SIDEWALK REMOVAL

	STA.	STA.	SQ FT
1	178+82.97	180+00.00	791
2	178+23.03	180+00.00	998



SIDEWALK REMOVAL

	STA.	STA.	SQ FT
3	180+00.00	181+41.34	771
4	181+88.08	182+47.24	399
5	180+00.00	182+74.83	1338
6	183+57.65	184+20.92	60
7	185+42.97	186+20.29	162
7A	187+76.53	189+21.00	840
8	189+86.44	190+34.41	423

DRIVEWAY PAVEMENT REMOVALS

	1	2	3	4
STATION	181+66 LT	185+83 RT	185+83 RT	187+27 LT
PAVEMENT REMOVAL	320 SY	40 SY	40 SY	79 SY
C&G REMOVAL	125 LF	97 LF	97 LF	-
CURB REMOVAL	29 LF	-	-	38 LF
ISLAND REMOVAL	-	279 SF	279 SF	-

100 S. WACKER DR.
 CHICAGO, IL 60606
 TEL (312) 939-1000
 FAX (312) 939-4998
URS