

SIDEWALK REMOVAL

STA.	STA.	SO FT	
28	225+00.00	227+31.12	1134
29	225+00.00	228+30.40	1591
30	227+72.37	228+33.50	284
31	228+72.74	230+32.48	770
32	229+07.11	234+90.00	2795

DRIVEWAY PAVEMENT REMOVALS

STA.	STA.	SO FT	
33	230+50.26	235+71.47	90
34	230+94.00	235+01.31	2069
35	235+63.06	237+61.11	1057
36	235+76.87	236+01.24	204
37	237+91.48	239+94.27	989

DRIVEWAY PAVEMENT REMOVALS

STATION	14	15	16	17	18
PAVEMENT REMOVAL	151 SY	159 SY	373 SY	218 SY	115 SY
C&G REMOVAL	64 LF	60 LF	305 LF	214 LF	-
CURB REMOVAL	28 LF	46 LF	-	-	72 LF
ISLAND REMOVAL	-	-	319 SF	-	-

PARKING LOT PAVEMENT REMOVAL

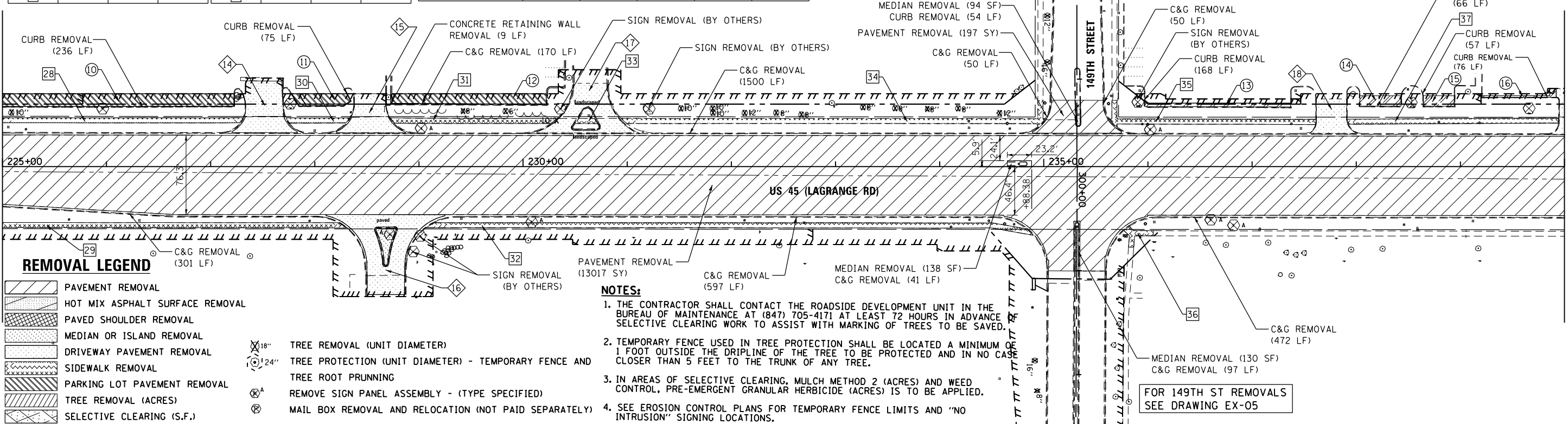
STA.	STA.	SO YD	
10	222+88.29	227+22.36	590
11	227+77.78	228+34.34	66
12	228+74.14	230+22.22	160
13	235+97.17	237+37.00	56

PARKING LOT PAVEMENT REMOVAL

STA.	STA.	SO YD	
14	238+03.42	238+43.10	44
15	238+64.60	238+94.23	40
16	239+20.89	239+92.01	17

SEE DRAWING EX-02
MATCH LINE STA. 225+00.00

MATCH LINE STA. 240+00.00
SEE BELOW



REMOVAL LEGEND

- PAVEMENT REMOVAL
- HOT MIX ASPHALT SURFACE REMOVAL
- PAVED SHOULDER REMOVAL
- MEDIAN OR ISLAND REMOVAL
- DRIVEWAY PAVEMENT REMOVAL
- SIDEWALK REMOVAL
- PARKING LOT PAVEMENT REMOVAL
- TREE REMOVAL (ACRES)
- SELECTIVE CLEARING (S.F.)

- 18" TREE REMOVAL (UNIT DIAMETER)
- 24" TREE PROTECTION (UNIT DIAMETER) - TEMPORARY FENCE AND TREE ROOT PRUNNING
- REMOVE SIGN PANEL ASSEMBLY - (TYPE SPECIFIED)
- MAIL BOX REMOVAL AND RELOCATION (NOT PAID SEPARATELY)

NOTES:

- THE CONTRACTOR SHALL CONTACT THE ROADSIDE DEVELOPMENT UNIT IN THE BUREAU OF MAINTENANCE AT (847) 705-4171 AT LEAST 72 HOURS IN ADVANCE SELECTIVE CLEARING WORK TO ASSIST WITH MARKING OF TREES TO BE SAVED.
- TEMPORARY FENCE USED IN TREE PROTECTION SHALL BE LOCATED A MINIMUM OF 1 FOOT OUTSIDE THE DRIPLINE OF THE TREE TO BE PROTECTED AND IN NO CASE CLOSER THAN 5 FEET TO THE TRUNK OF ANY TREE.
- IN AREAS OF SELECTIVE CLEARING, MULCH METHOD 2 (ACRES) AND WEED CONTROL, PRE-EMERGENT GRANULAR HERBICIDE (ACRES) IS TO BE APPLIED.
- SEE EROSION CONTROL PLANS FOR TEMPORARY FENCE LIMITS AND "NO INTRUSION" SIGNING LOCATIONS.

FOR 149TH ST REMOVALS
SEE DRAWING EX-05

DRIVEWAY PAVEMENT REMOVALS

STATION	19	20	21	22	23	24	25	26
PAVEMENT REMOVAL	142 SY	71 SY	70 SY	298 SY	188 SY	116 SY	62 SY	175 SY
C&G REMOVAL	-	-	-	263 LF	-	92 LF	-	-
CURB REMOVAL	90 LF	56 LF	64 LF	-	106 LF	95 LF	-	107 LF
ISLAND REMOVAL	-	-	-	301 SF	-	-	-	-

SIDEWALK REPLACEMENT (429 SF) - BLOCK WALL REMOVAL & REINSTALLATION SHALL BE INCIDENTAL TO SIDEWALK REPLACEMENT

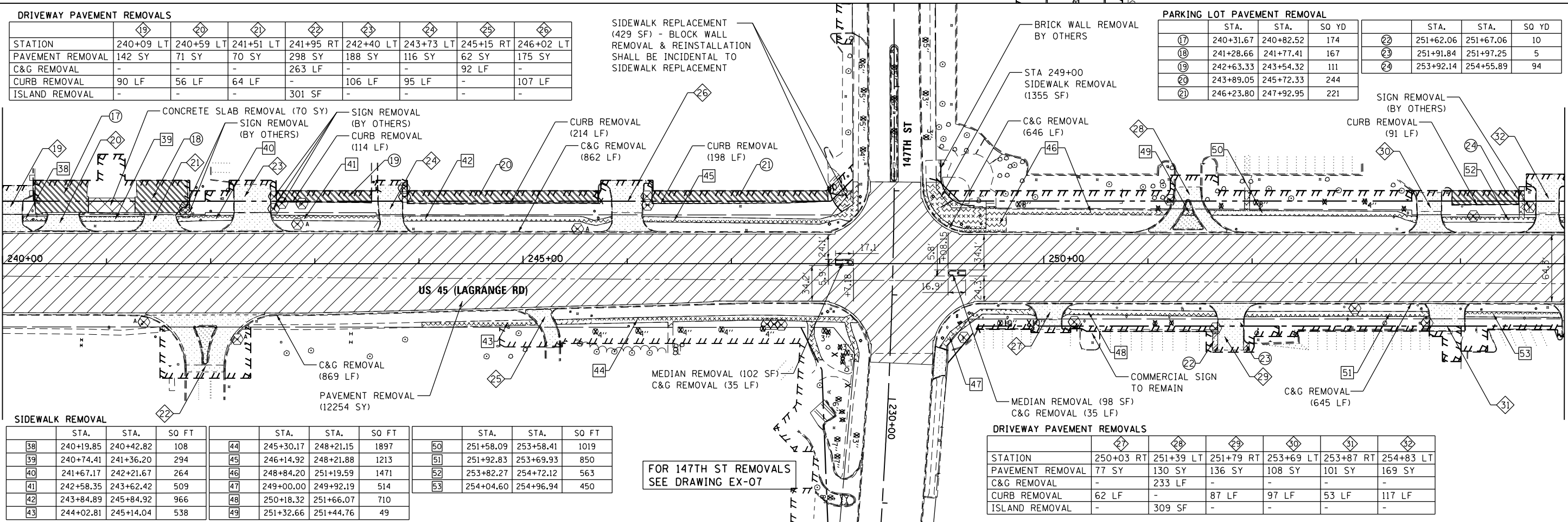
PARKING LOT PAVEMENT REMOVAL

STA.	STA.	SO YD	
17	240+31.67	240+82.52	174
18	241+28.66	241+77.41	167
19	242+63.33	243+54.32	111
20	243+89.05	245+72.33	244
21	246+23.80	247+92.95	221

STA.	STA.	SO YD	
22	251+62.06	251+67.06	10
23	251+91.84	251+97.25	5
24	253+92.14	254+55.89	94

SEE ABOVE
MATCH LINE STA. 240+00.00

MATCH LINE STA. 255+00.00
SEE DRAWING EX-04



SIDEWALK REMOVAL

STA.	STA.	SO FT	
38	240+19.85	240+42.82	108
39	240+74.41	241+36.20	294
40	241+67.17	242+21.67	264
41	242+58.35	243+62.42	509
42	243+84.89	245+84.92	966
43	244+02.81	245+14.04	538

STA.	STA.	SO FT	
44	245+30.17	248+21.15	1897
45	246+14.92	248+21.88	1213
46	248+84.20	251+19.59	1471
47	249+00.00	249+92.19	514
48	250+18.32	251+66.07	710
49	251+32.66	251+44.76	49

STA.	STA.	SO FT	
50	251+58.09	253+58.41	1019
51	251+92.83	253+69.93	850
52	253+82.27	254+72.12	563
53	254+04.60	254+96.94	450

FOR 147TH ST REMOVALS
SEE DRAWING EX-07

DRIVEWAY PAVEMENT REMOVALS

STATION	27	28	29	30	31	32
PAVEMENT REMOVAL	77 SY	130 SY	136 SY	108 SY	101 SY	169 SY
C&G REMOVAL	-	233 LF	-	-	-	-
CURB REMOVAL	62 LF	-	87 LF	97 LF	53 LF	117 LF
ISLAND REMOVAL	-	309 SF	-	-	-	-



FILE NAME = D160M61-SHT-REM03.dgn	USER NAME = Anthony.Plutz	DESIGNED - BFH	REVISED -
PLOT SCALE = 100.000000' / 1"	CHECKED - MJT	DRAWN - BFH	REVISED -
PLOT DATE = 3/14/2013	DATE = 03/13/2013		

STATE OF ILLINOIS
DEPARTMENT OF TRANSPORTATION

EXISTING PLAN AND REMOVALS - US 45 (LAGRANGE ROAD)

SCALE: 1"=50' SHEET 3 OF 4 SHEETS STA. 225+00.00 TO STA. 255+00.00

F.A.P. RTE. 330	SECTION 103R-4	COUNTY COOK	TOTAL SHEETS 877	SHEET NO. 47
EX-03			CONTRACT NO. 60M61	
ILLINOIS FED. AID PROJECT				