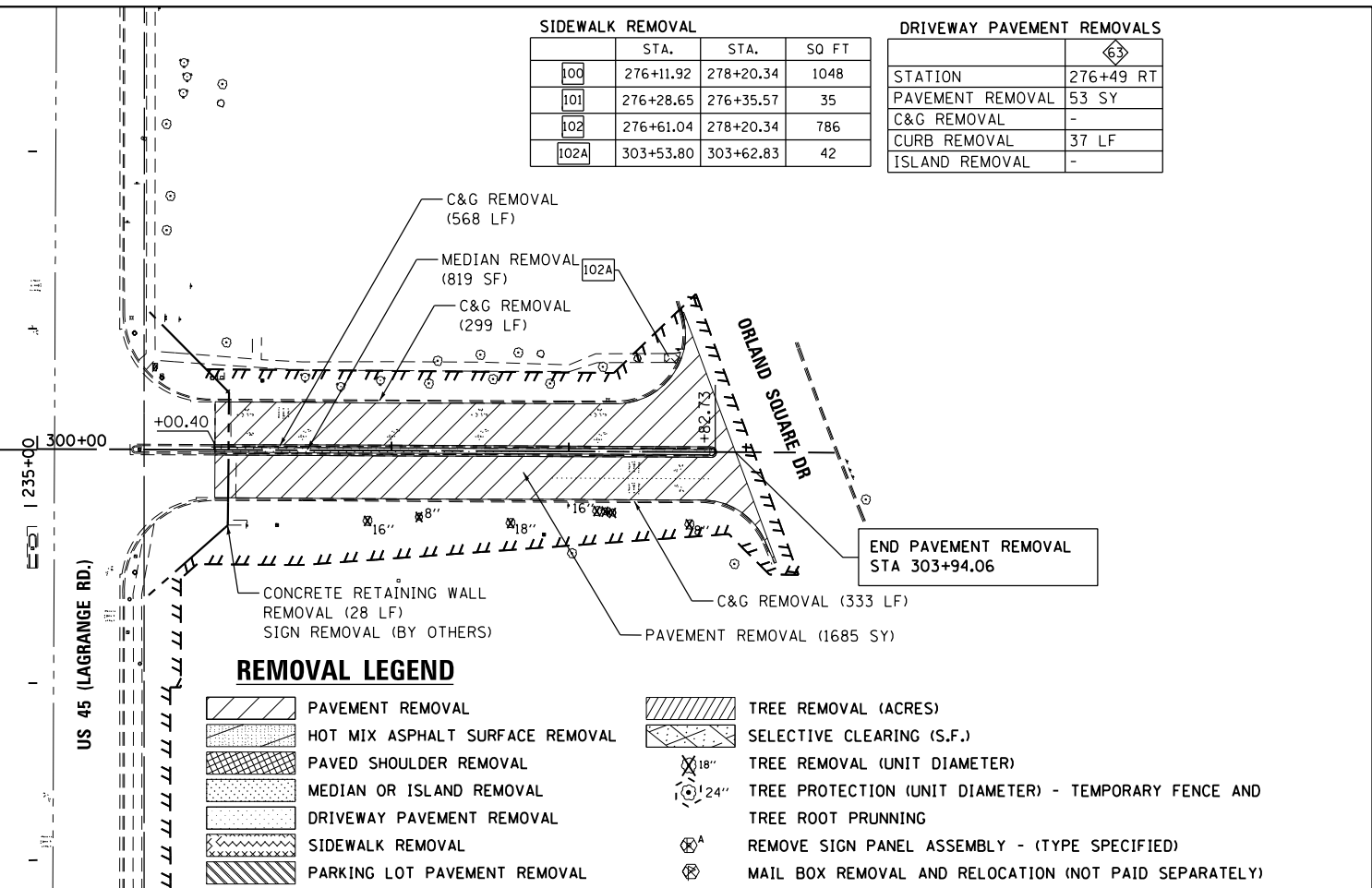
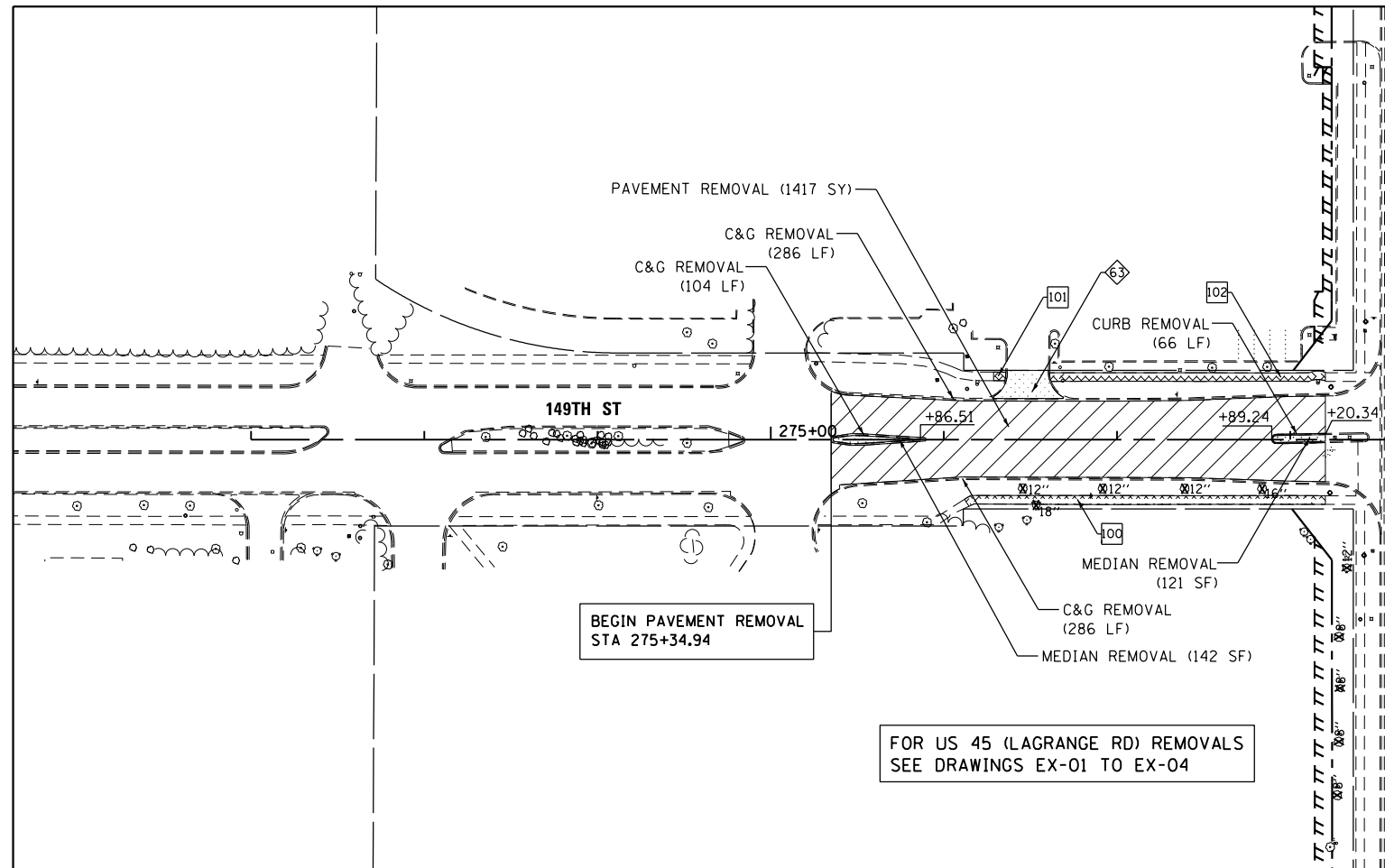
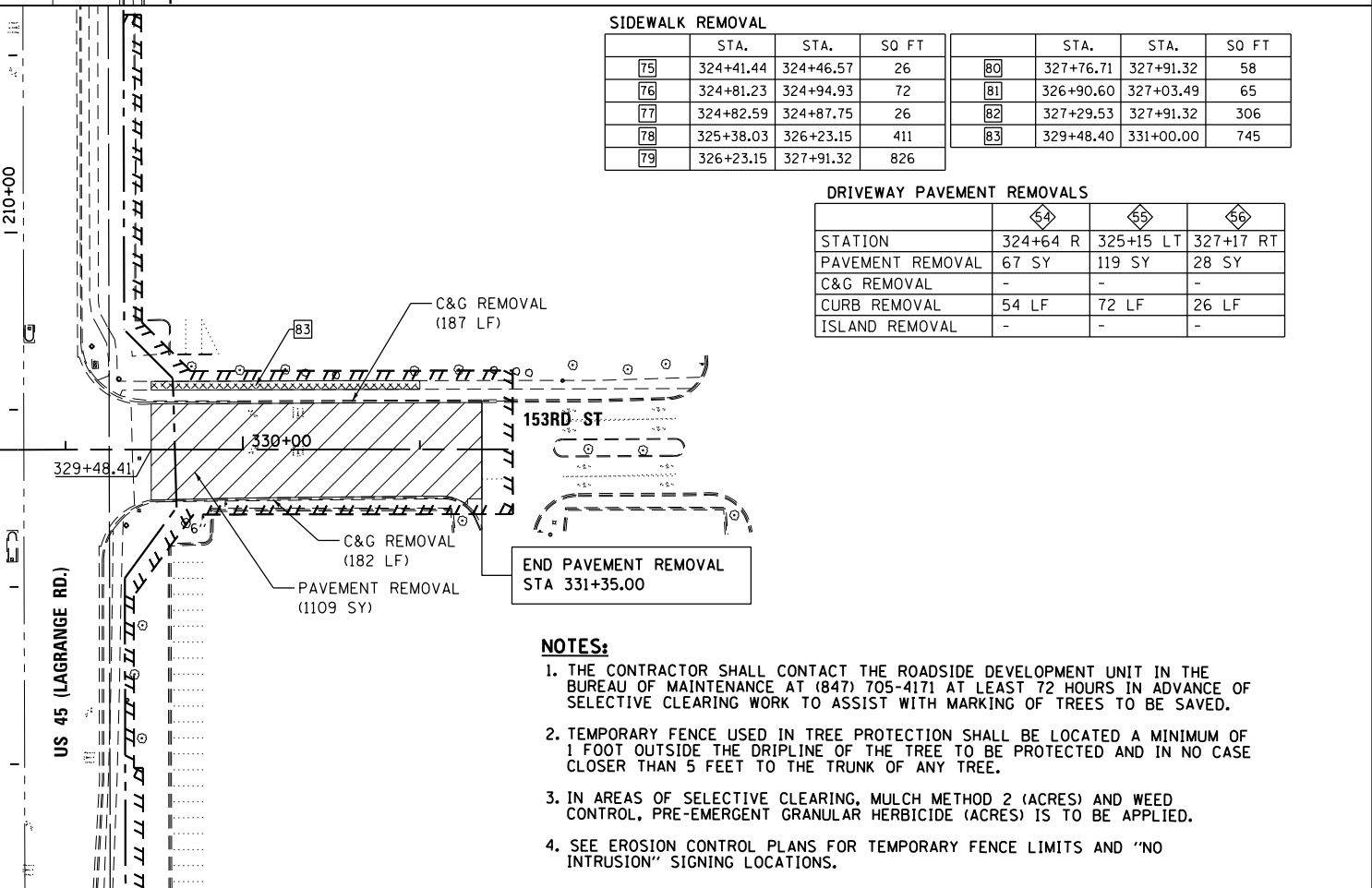
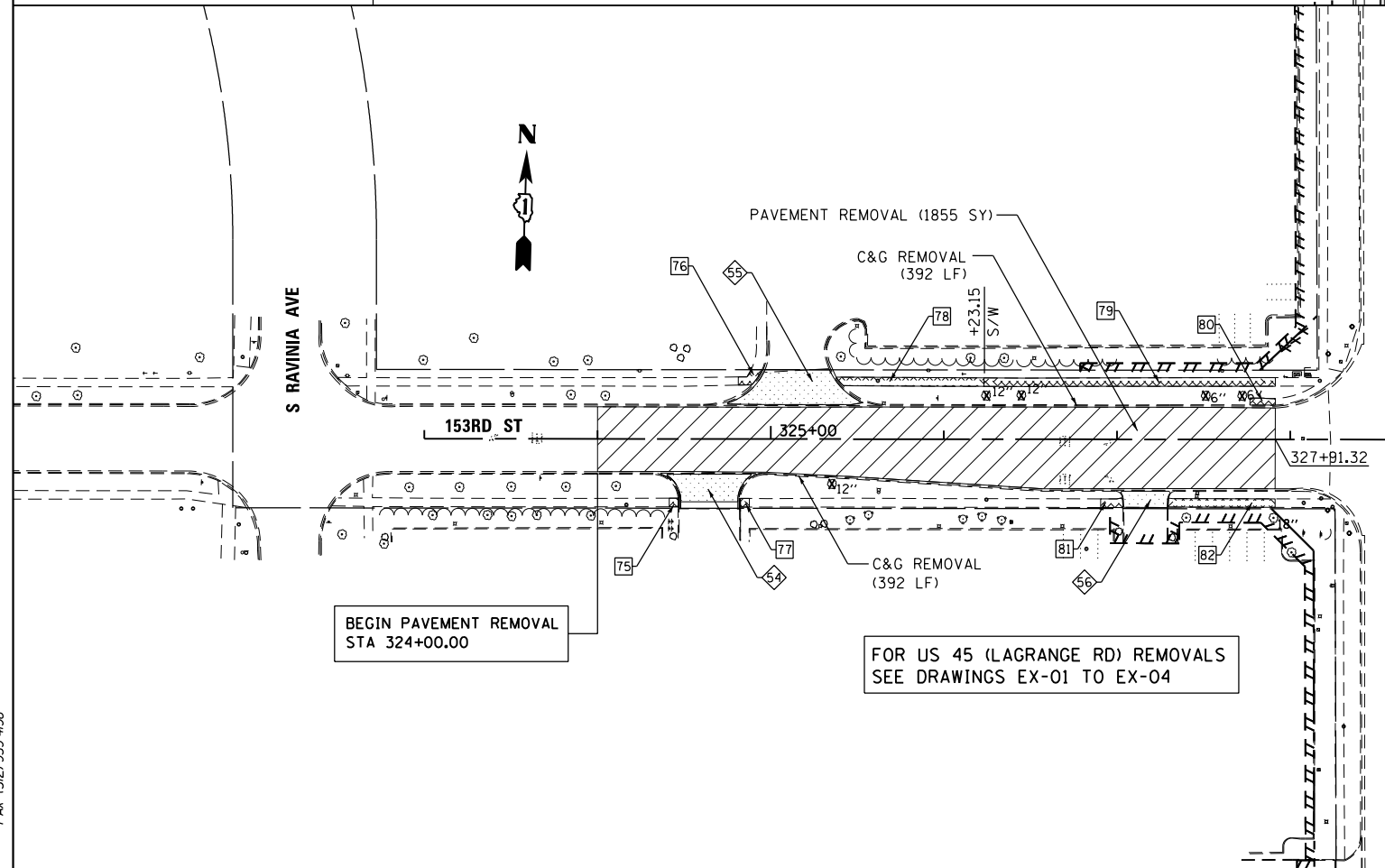


SIDEWALK REMOVAL				DRIVEWAY PAVEMENT REMOVALS	
	STA.	STA.	SQ FT		
100	276+11.92	278+20.34	1048	STATION	276+49 RT
101	276+28.65	276+35.57	35	PAVEMENT REMOVAL	53 SY
102	276+61.04	278+20.34	786	C&G REMOVAL	-
102A	303+53.80	303+62.83	42	CURB REMOVAL	37 LF
				ISLAND REMOVAL	-



REMOVAL LEGEND

	PAVEMENT REMOVAL		TREE REMOVAL (ACRES)
	HOT MIX ASPHALT SURFACE REMOVAL		SELECTIVE CLEARING (S.F.)
	PAVED SHOULDER REMOVAL		TREE REMOVAL (UNIT DIAMETER)
	MEDIAN OR ISLAND REMOVAL		TREE PROTECTION (UNIT DIAMETER) - TEMPORARY FENCE AND TREE ROOT PRUNING
	DRIVEWAY PAVEMENT REMOVAL		REMOVE SIGN PANEL ASSEMBLY - (TYPE SPECIFIED)
	SIDEWALK REMOVAL		MAIL BOX REMOVAL AND RELOCATION (NOT PAID SEPARATELY)
	PARKING LOT PAVEMENT REMOVAL		



SIDEWALK REMOVAL				DRIVEWAY PAVEMENT REMOVALS			
	STA.	STA.	SQ FT		STA.	STA.	SQ FT
75	324+41.44	324+46.57	26	80	327+76.71	327+91.32	58
76	324+81.23	324+94.93	72	81	326+90.60	327+03.49	65
77	324+82.59	324+87.75	26	82	327+29.53	327+91.32	306
78	325+38.03	326+23.15	411	83	329+48.40	331+00.00	745
79	326+23.15	327+91.32	826				

DRIVEWAY PAVEMENT REMOVALS			
STATION	64	65	66
STATION	324+64 R	325+15 LT	327+17 RT
PAVEMENT REMOVAL	67 SY	119 SY	28 SY
C&G REMOVAL	-	-	-
CURB REMOVAL	54 LF	72 LF	26 LF
ISLAND REMOVAL	-	-	-

- NOTES:**
1. THE CONTRACTOR SHALL CONTACT THE ROADSIDE DEVELOPMENT UNIT IN THE BUREAU OF MAINTENANCE AT (847) 705-4171 AT LEAST 72 HOURS IN ADVANCE OF SELECTIVE CLEARING WORK TO ASSIST WITH MARKING OF TREES TO BE SAVED.
 2. TEMPORARY FENCE USED IN TREE PROTECTION SHALL BE LOCATED A MINIMUM OF 1 FOOT OUTSIDE THE DRIPLINE OF THE TREE TO BE PROTECTED AND IN NO CASE CLOSER THAN 5 FEET TO THE TRUNK OF ANY TREE.
 3. IN AREAS OF SELECTIVE CLEARING, MULCH METHOD 2 (ACRES) AND WEED CONTROL, PRE-EMERGENT GRANULAR HERBICIDE (ACRES) IS TO BE APPLIED.
 4. SEE EROSION CONTROL PLANS FOR TEMPORARY FENCE LIMITS AND "NO INTRUSION" SIGNING LOCATIONS.

100 S. WACKER DR.
SUITE 600
CHICAGO, IL 60606
TEL (312) 939-1000
FAX (312) 939-4998

URS

FILE NAME = D160M61-SHT-REM05.dgn	USER NAME = Anthony.Plutz	DESIGNED - BFH	REVISED -
PLOT SCALE = 100.000000' / 1" =	CHECKED - MJT	DRAWN - BFH	REVISED -
SHT_DOUBLE PLAN	PLOT DATE = 3/14/2013	DATE - 03/13/2013	REVISED -

STATE OF ILLINOIS
DEPARTMENT OF TRANSPORTATION

EXISTING PLAN AND REMOVALS - 153RD STREET AND 149TH STREET
SCALE: 1"=50' SHEET 1 OF 1 SHEETS STA. TO STA.

F.A.P. RTE. 330	SECTION 103R-4	COUNTY COOK	TOTAL SHEETS 877	SHEET NO. 49
EX-05		CONTRACT NO. 60M61		
ILLINOIS FED. AID PROJECT				