

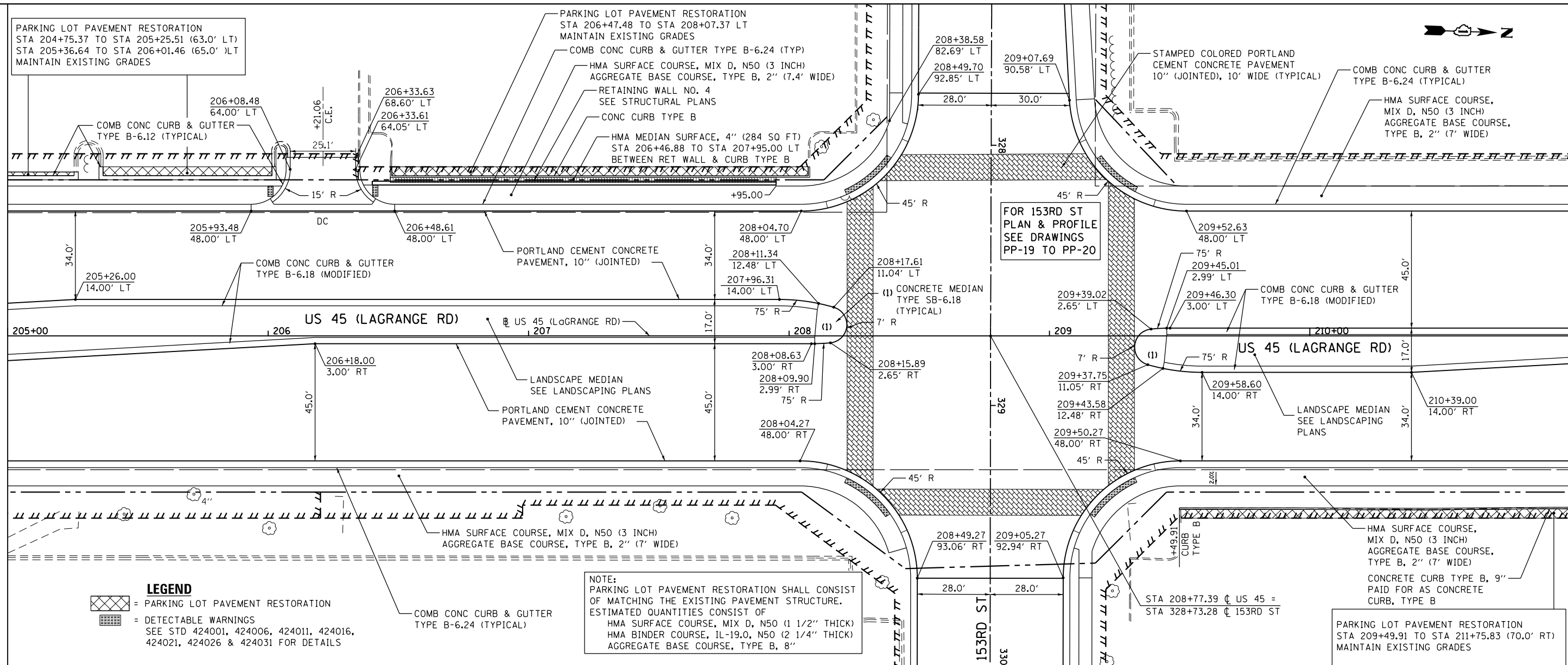
PLAN	SURVEYED	DATE
	PLOTTED	
	NOTED	
	CHECKED	
	FILED	
	NO.	

PROFILE	SURVEYED	DATE
	PLOTTED	
	NOTED	
	CHECKED	
	FILED	
	NO.	

100 S. WACKER DR.
SUITE 500
CHICAGO, IL 60606
TEL (312) 329-4000
FAX (312) 329-4000

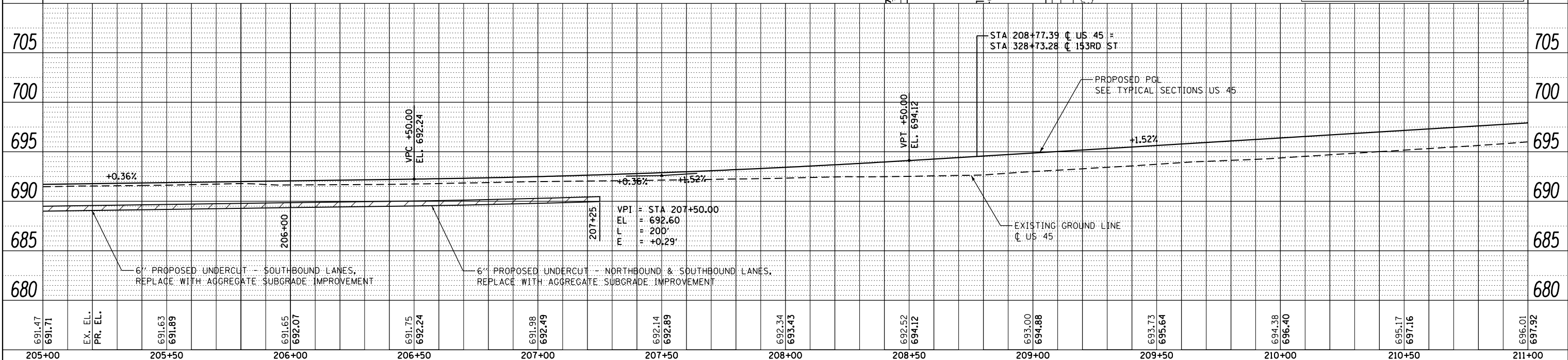
SEE DRAWING PP-06
MATCH LINE STA. 205+00.00

MATCH LINE STA. 211+00.00
SEE DRAWING PP-08



LEGEND
 = PARKING LOT PAVEMENT RESTORATION
 = DETECTABLE WARNINGS
 SEE STD 424001, 424006, 424011, 424016, 424021, 424026 & 424031 FOR DETAILS
 = COMB CONC CURB & GUTTER TYPE B-6.24 (TYPICAL)

NOTE:
 PARKING LOT PAVEMENT RESTORATION SHALL CONSIST OF MATCHING THE EXISTING PAVEMENT STRUCTURE. ESTIMATED QUANTITIES CONSIST OF
 HMA SURFACE COURSE, MIX D, N50 (1 1/2" THICK)
 HMA BINDER COURSE, IL-19.0, N50 (2 1/4" THICK)
 AGGREGATE BASE COURSE, TYPE B, 8"



FILE NAME =	USER NAME = Frank.Stallone	DESIGNED - JTF	REVISED -
D160M61-SHT-PLNPRF07.dgn		DRAWN - JTF	REVISED -
		CHECKED - MJT	REVISED -
		DATE - 03/13/2013	REVISED -

STATE OF ILLINOIS
DEPARTMENT OF TRANSPORTATION

PROPOSED PLAN AND PROFILE - US 45 (LAGRANGE ROAD)
SCALE: 1"=20'H; 1"=5' SHEET 7 OF 18 SHEETS STA. 205+00.00 TO STA. 211+00.00

F.A.P. RTE.	SECTION	COUNTY	TOTAL SHEETS	SHEET NO.
330	103R-4	COOK	877	58
PP-07		CONTRACT NO. 60M61		
ILLINOIS FED. AID PROJECT				