

PLAN	SURVEYED	DATE
	PLOTTED	BY
	GRADES CHECKED	
	ALIGNMENT CHECKED	
	STRUCTURE NOTATIONS CHECKED	
	NOTE BOOK NO.	
	FILE NAME	

PROFILE	SURVEYED	DATE
	PLOTTED	BY
	GRADES CHECKED	
	ALIGNMENT CHECKED	
	STRUCTURE NOTATIONS CHECKED	
	NOTE BOOK NO.	
	FILE NAME	

100 S. WACKER DR.
SUITE 500
CHICAGO, IL 60606
TEL (312) 329-4000
FAX (312) 329-4098

URS

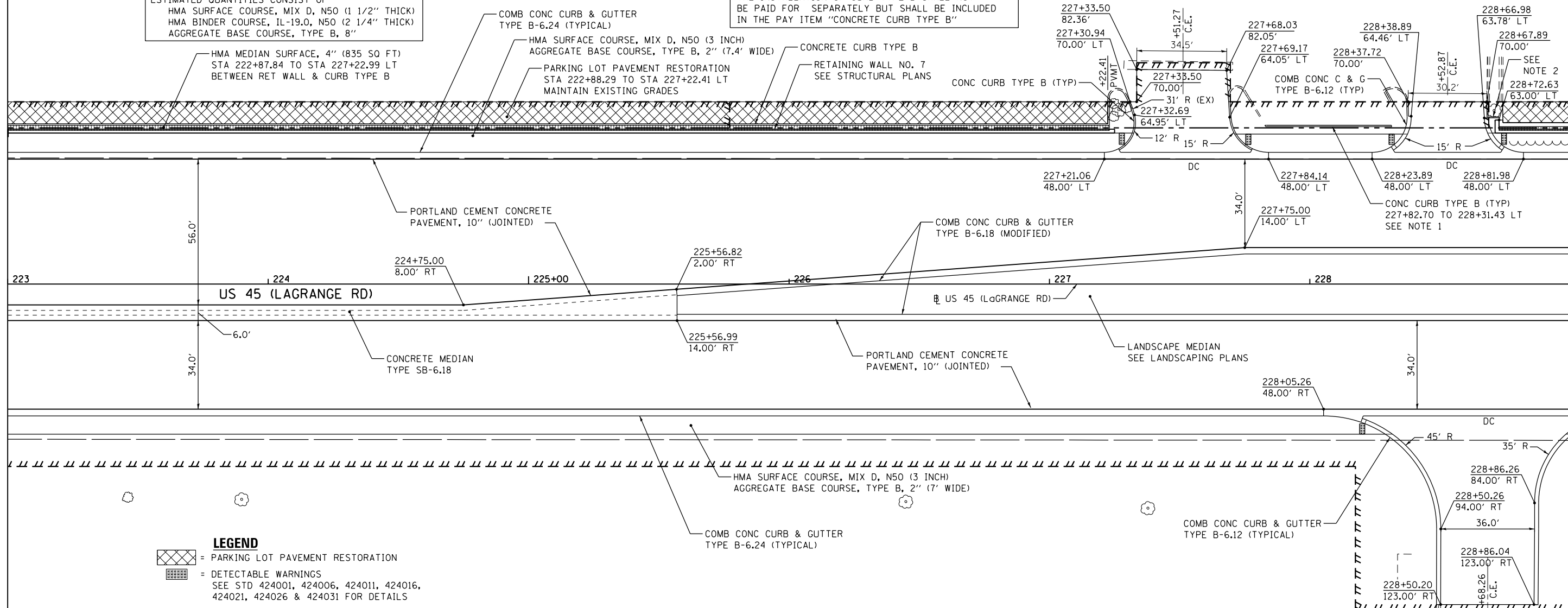
SEE DRAWING PP-09
MATCH LINE STA. 223+00.00

MATCH LINE STA. 229+00.00
SEE DRAWING PP-11

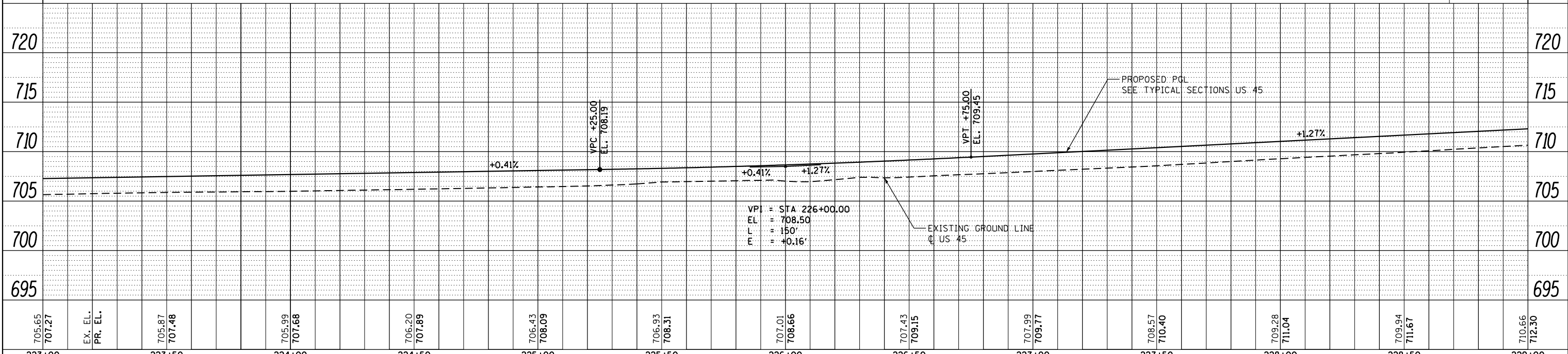
NOTE:
PARKING LOT PAVEMENT RESTORATION SHALL CONSIST OF MATCHING THE EXISTING PAVEMENT STRUCTURE. ESTIMATED QUANTITIES CONSIST OF
HMA SURFACE COURSE, MIX D, N50 (1 1/2" THICK)
HMA BINDER COURSE, IL-19.0, N50 (2 1/4" THICK)
AGGREGATE BASE COURSE, TYPE B, 8"

NOTE 1:
ANY PAVEMENT REMOVAL AND REPAIR IN THE PARKING LOT ENCOUNTERED DURING THE INSTALLATION OF CURB TYPE B SHALL NOT BE PAID FOR SEPARATELY BUT SHALL BE INCLUDED IN THE PAY ITEM "CONCRETE CURB TYPE B"

NOTE 2:
RECONNECT PLANTER WALL TO EXISTING CURB & GUTTER PAID FOR AS COMB CONCRETE CURB & GUTTER TYPE B-6.12



LEGEND
 = PARKING LOT PAVEMENT RESTORATION
 = DETECTABLE WARNINGS
 SEE STD 424001, 424006, 424011, 424016, 424021, 424026 & 424031 FOR DETAILS



705.65 707.27	EX. EL. PR. EL.	705.87 707.48	705.99 707.68	706.20 707.89	706.43 708.09	706.93 708.31	707.01 708.66	707.43 709.15	707.99 709.77	708.57 710.40	709.28 711.04	709.94 711.67	710.66 712.30
223+00		223+50	224+00	224+50	225+00	225+50	226+00	226+50	227+00	227+50	228+00	228+50	229+00

FILE NAME =
D160M61-SHT-PLNPRF10.dgn
SHT_PLNPRF URBAN

USER NAME = Frank.Stallone
DESIGNED - JTF
DRAWN - JTF
CHECKED - MJT
DATE - 03/13/2013

REVISIONS
 REVISION NO. | DATE | BY | DESCRIPTION
 1 | 03/13/2013 | JTF | DESIGNED
 2 | 03/13/2013 | JTF | DRAWN
 3 | 03/13/2013 | MJT | CHECKED

STATE OF ILLINOIS
DEPARTMENT OF TRANSPORTATION

PROPOSED PLAN AND PROFILE - US 45 (LAGRANGE ROAD)
SCALE: 1"=20'H; 1"=5' | SHEET 10 OF 18 SHEETS | STA. 223+00.00 TO STA. 229+00.00

F.A.P. RTE. 330	SECTION 103R-4	COUNTY COOK	TOTAL SHEETS 877	SHEET NO. 61
PP-10		CONTRACT NO. 60M61		
ILLINOIS FED. AID PROJECT				