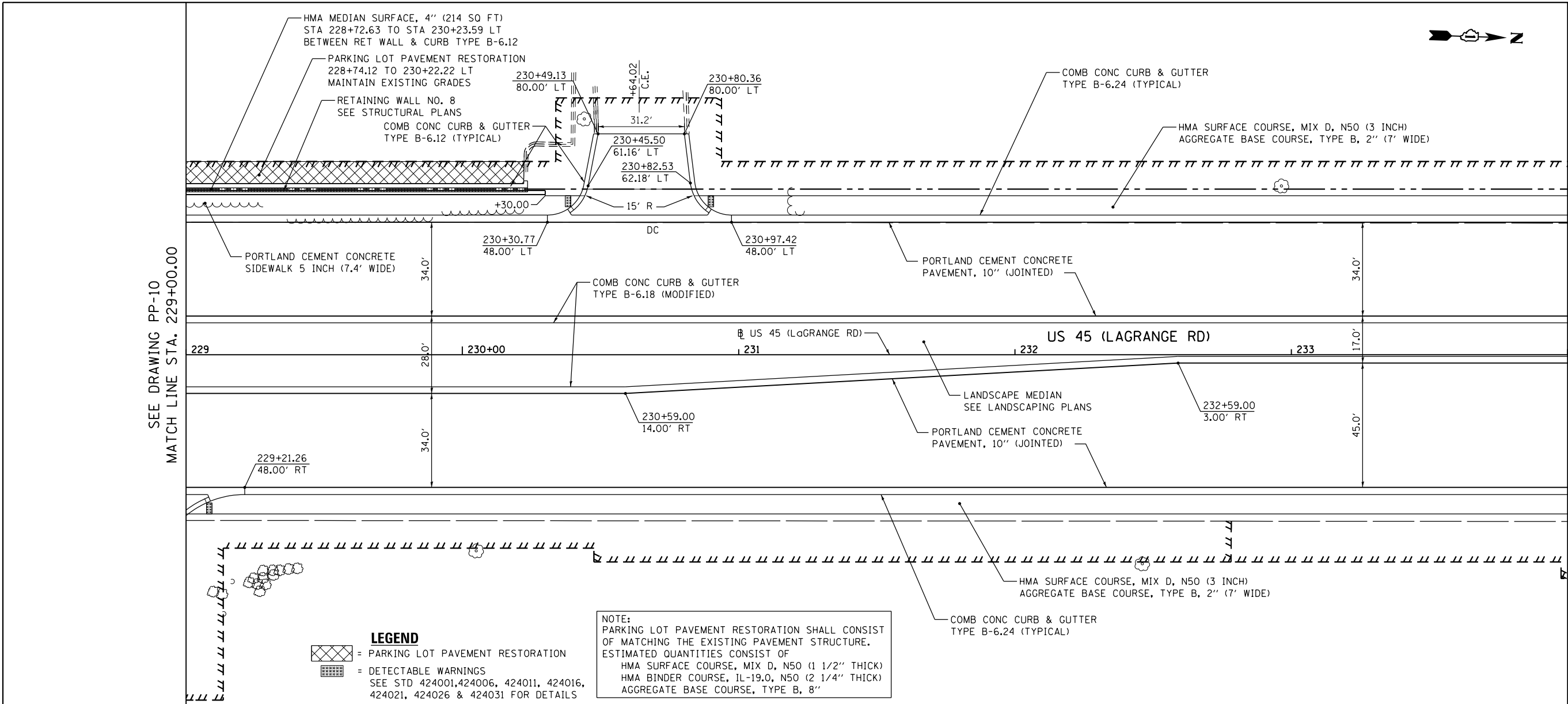


PLAN	SURVEYED	DATE
	PLOTTED	
	ALIGNED	
	CHECKED	
	FILED	
NOTE BOOK NO.	FILE NAME	

PROFILE	SURVEYED	DATE
	PLOTTED	
	GRADES CHECKED	
	STRUCTURE NOTATIONS CHECKED	
NOTE BOOK NO.	FILE NAME	

100 S. WACKER DR.
SUITE 500
CHICAGO, IL 60606
TEL (312) 539-4900
FAX (312) 539-4998

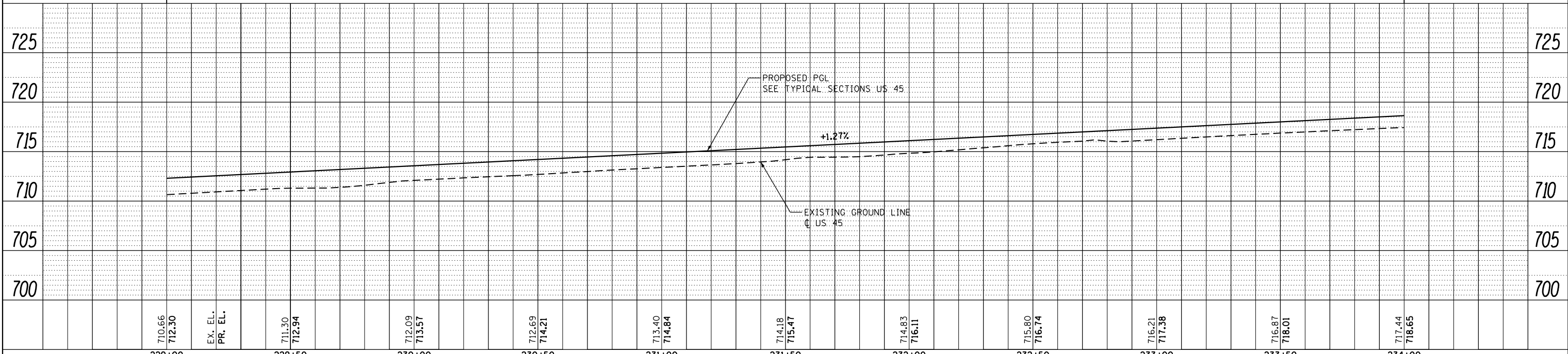


SEE DRAWING PP-10
MATCH LINE STA. 229+00.00

MATCH LINE STA. 234+00.00
SEE DRAWING PP-12

LEGEND
 = PARKING LOT PAVEMENT RESTORATION
 = DETECTABLE WARNINGS
 SEE STD 424001, 424006, 424011, 424016, 424021, 424026 & 424031 FOR DETAILS

NOTE:
 PARKING LOT PAVEMENT RESTORATION SHALL CONSIST OF MATCHING THE EXISTING PAVEMENT STRUCTURE. ESTIMATED QUANTITIES CONSIST OF:
 HMA SURFACE COURSE, MIX D, N50 (1 1/2" THICK)
 HMA BINDER COURSE, IL-19.0, N50 (2 1/4" THICK)
 AGGREGATE BASE COURSE, TYPE B, 8"



FILE NAME =	USER NAME = Frank.Stallone	DESIGNED - JTF	REVISED -	STATE OF ILLINOIS DEPARTMENT OF TRANSPORTATION	PROPOSED PLAN AND PROFILE - US 45 (LAGRANGE ROAD) SCALE: 1"=20'H; 1"=5' SHEET 11 OF 18 SHEETS STA. 229+00.00 TO STA. 234+00.00	F.A.P. RTE. 330	SECTION 103R-4	COUNTY COOK	TOTAL SHEETS 877	SHEET NO. 62		
D160M61-SHT-PLNPRF11.dgn	PLOT SCALE = 48.0000' / in.	CHECKED - MJT	REVISED -			PP-11 CONTRACT NO. 60M61		ILLINOIS FED. AID PROJECT				
SHT_PLNPRF URBAN	PLOT DATE = 3/15/2013	DATE - 03/13/2013	REVISED -									