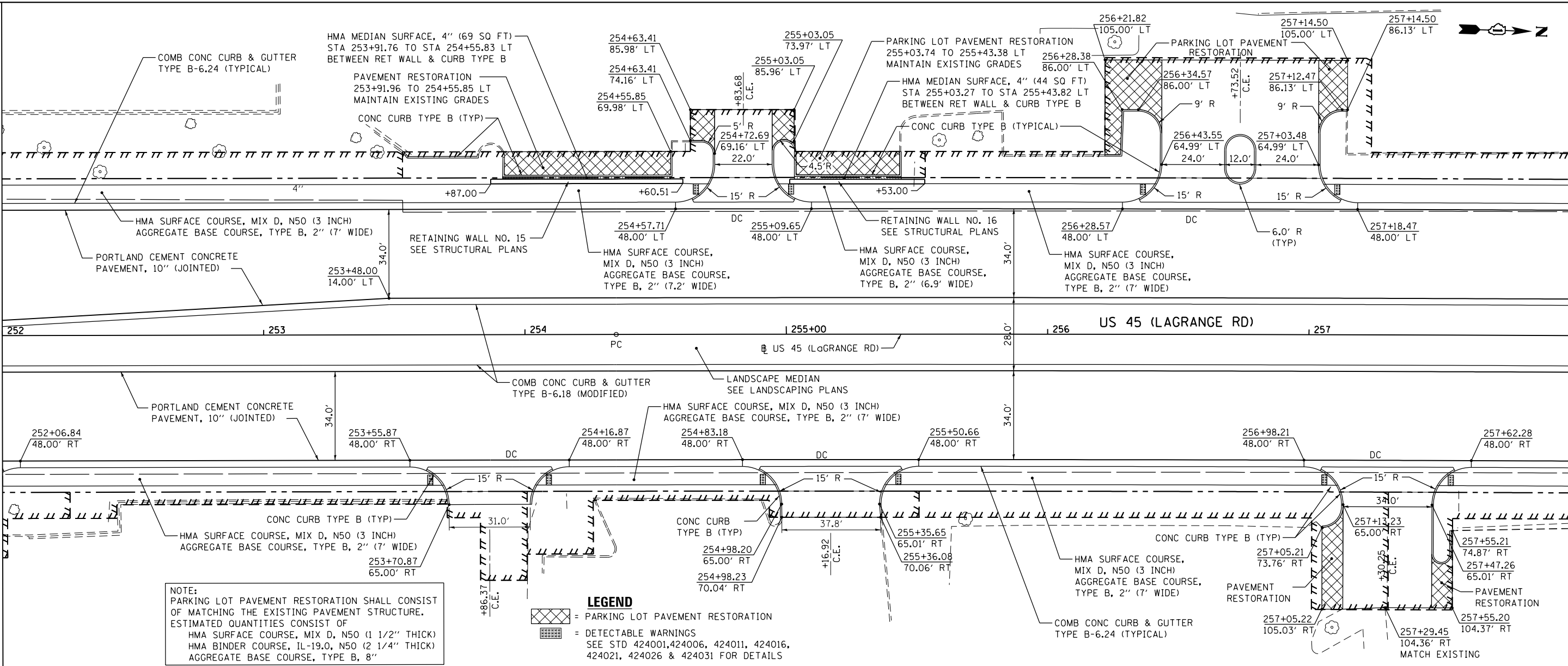


PLAN	SURVEYED	DATE
	PLOTTED	BY
	NOTED	
	CHECKED	
	FILED	
	NO.	

PROFILE	SURVEYED	DATE
	GRADES CHECKED	BY
	STRUCTURE NOTATIONS CHECKED	
	NO.	

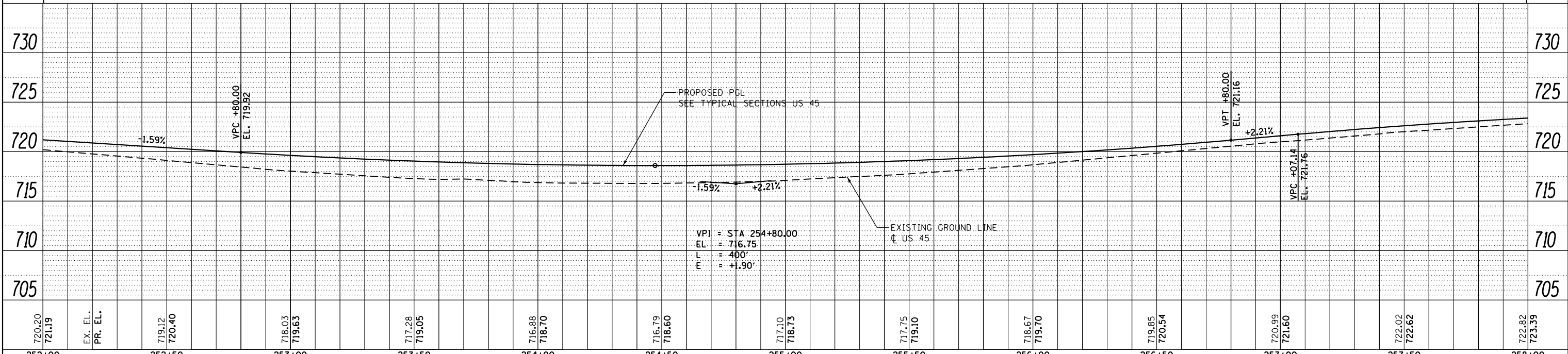
100 S. WACKER DR.  
SUITE 500  
CHICAGO, IL 60606  
TEL (312) 339-4000  
FAX (312) 339-4098

SEE DRAWING PP-14  
MATCH LINE STA. 252+00.00



NOTE:  
PARKING LOT PAVEMENT RESTORATION SHALL CONSIST OF MATCHING THE EXISTING PAVEMENT STRUCTURE. ESTIMATED QUANTITIES CONSIST OF  
HMA SURFACE COURSE, MIX D, N50 (1 1/2" THICK)  
HMA BINDER COURSE, IL-19.0, N50 (2 1/4" THICK)  
AGGREGATE BASE COURSE, TYPE B, 8"

**LEGEND**  
 = PARKING LOT PAVEMENT RESTORATION  
 = DETECTABLE WARNINGS  
 SEE STD 424001, 424006, 424011, 424016, 424021, 424026 & 424031 FOR DETAILS



MATCH LINE STA. 258+00.00  
SEE DRAWING PP-16

FILE NAME =	USER NAME = Frank.Stallone	DESIGNED - JTF	REVISED -	<b>STATE OF ILLINOIS</b> <b>DEPARTMENT OF TRANSPORTATION</b>	<b>PROPOSED PLAN AND PROFILE - US 45 (LAGRANGE ROAD)</b> SCALE: 1"=20'H; 1"=5' SHEET 15 OF 18 SHEETS STA. 252+00.00 TO STA. 258+00.00	F.A.P. RTE. = 330	SECTION = 103R-4	COUNTY = COOK	TOTAL SHEETS = 877	SHEET NO. = 66	
D160M61-SHT-PLNPRF15.dgn	PLOT SCALE = 40.0000' / in.	CHECKED - MJT	REVISED -			<b>PP-15</b>		CONTRACT NO. 60M61		ILLINOIS FED. AID PROJECT	
SHT_PLNPRF URBAN	PLOT DATE = 3/15/2013	DATE = 03/13/2013	REVISED -								