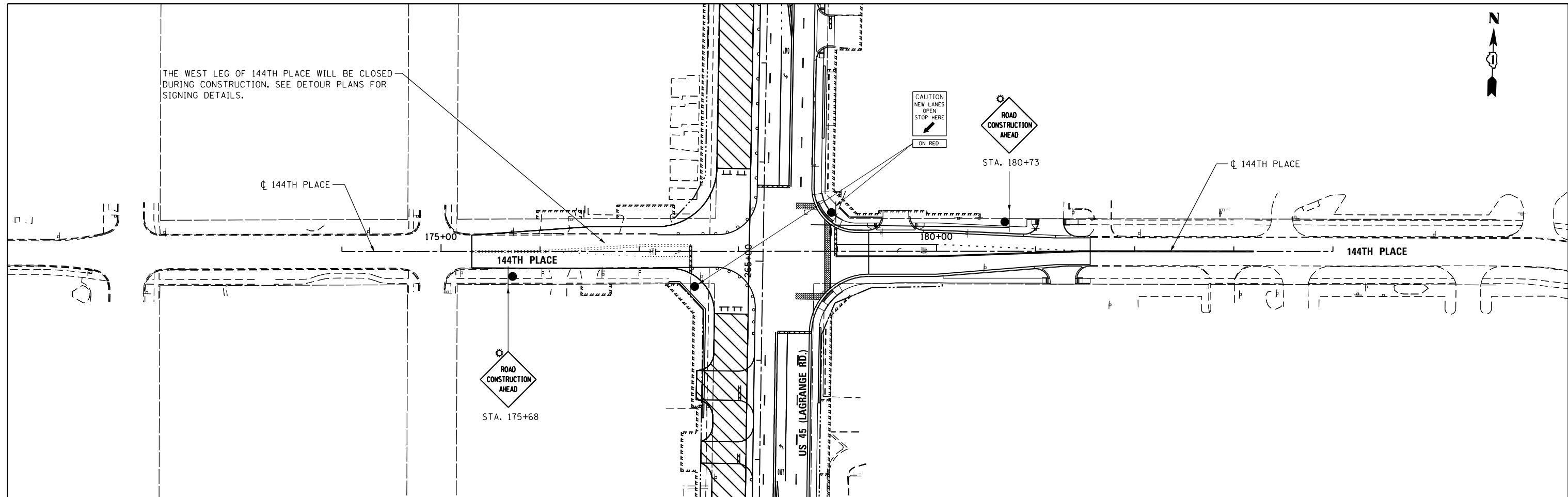
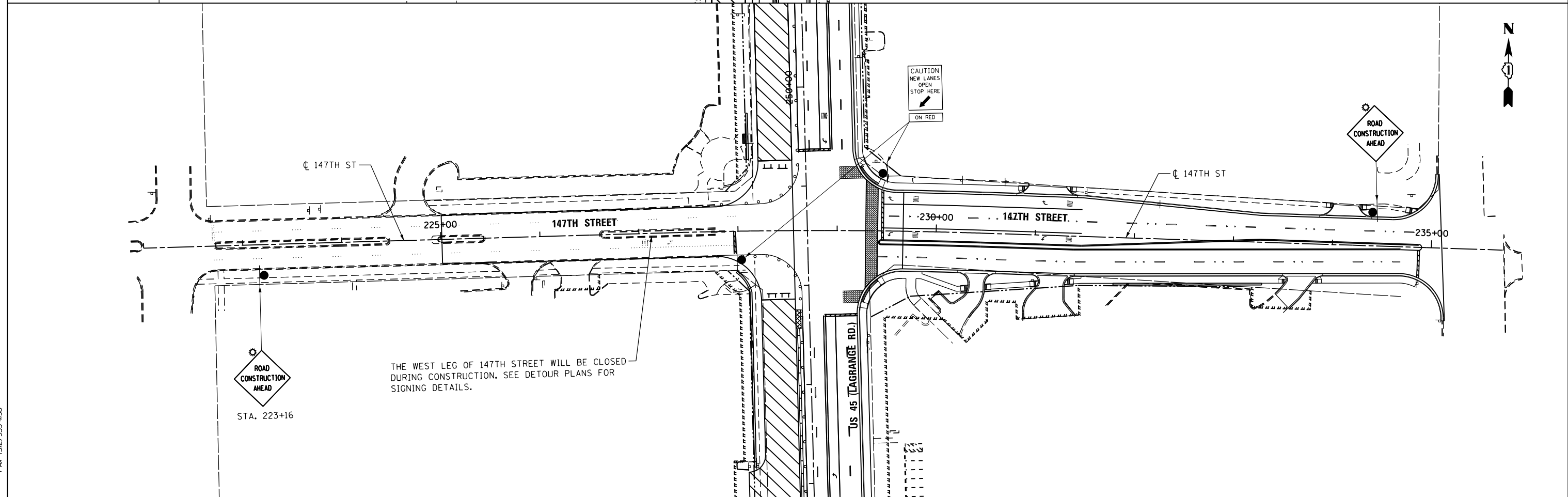




THE WEST LEG OF 144TH PLACE WILL BE CLOSED DURING CONSTRUCTION. SEE DETOUR PLANS FOR SIGNING DETAILS.



THE WEST LEG OF 147TH STREET WILL BE CLOSED DURING CONSTRUCTION. SEE DETOUR PLANS FOR SIGNING DETAILS.



100 S. WACKER DR.  
 5TH FLOOR  
 CHICAGO, IL 60606  
 TEL (312) 939-1000  
 FAX (312) 939-4998

**URS**

FILE NAME = D160M61-SHT-STAGING209.dgn	USER NAME = Anthony.Plutz	DESIGNED - TRK	REVISED -
		DRAWN - TRK	REVISED -
	PLOT SCALE = 100.000000' / 1" =	CHECKED - MJT	REVISED -
SHT_DOUBLE.PLAN	PLOT DATE = 3/15/2013	DATE - 03/13/2013	REVISED -

**STATE OF ILLINOIS  
 DEPARTMENT OF TRANSPORTATION**

**MAINTENANCE OF TRAFFIC STAGE 3B PLAN  
 144TH PLACE & 147TH STREET**

SCALE: 1"=50' SHEET 2 OF 2 SHEETS STA. BEGIN TO STA. END

F.A.P. RTE.	SECTION	COUNTY	TOTAL SHEETS	SHEET NO.
330	103R-4	COOK	877	125
<b>MT-30</b>			CONTRACT NO. 60M61	
ILLINOIS FED. AID PROJECT				