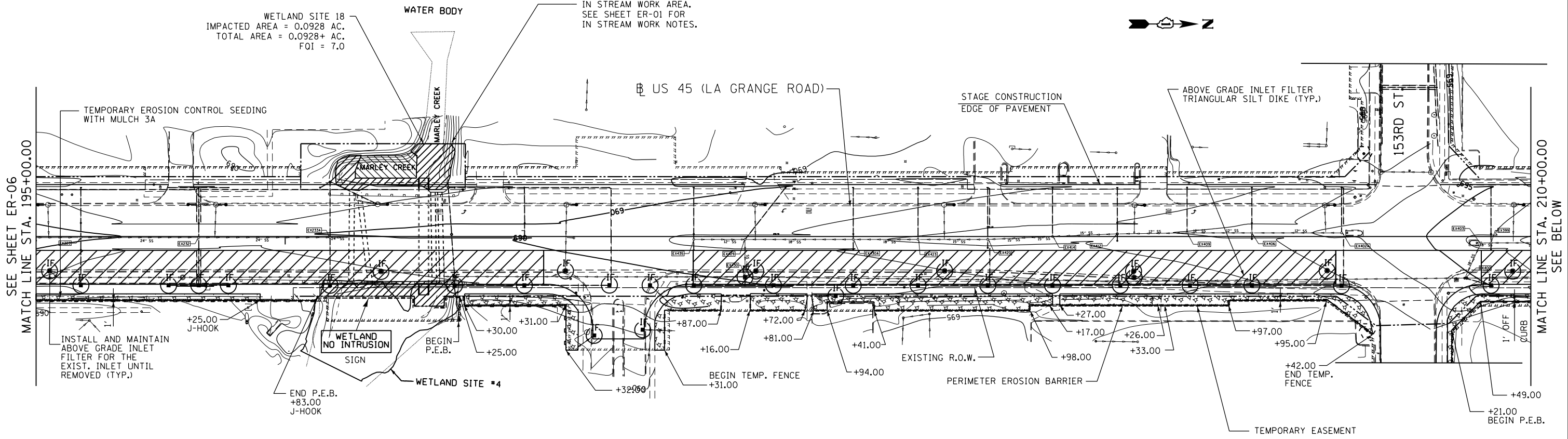
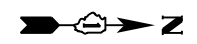
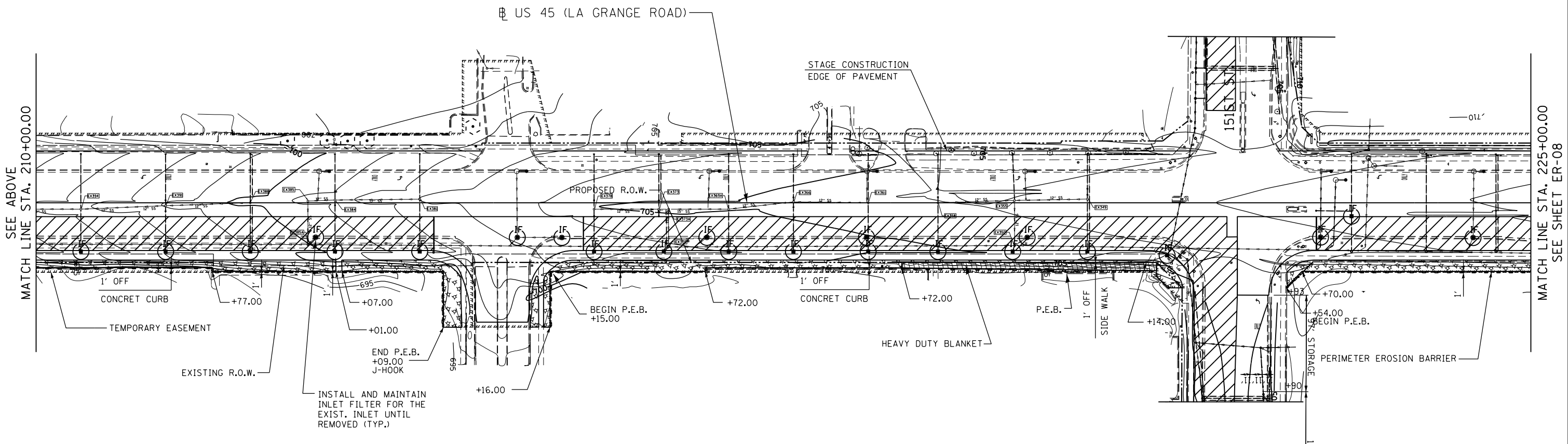
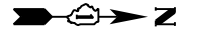


WETLAND SITE 18  
 IMPACTED AREA = 0.0928 AC.  
 TOTAL AREA = 0.0928+ AC.  
 FOI = 7.0

IN STREAM WORK AREA.  
 SEE SHEET ER-01 FOR  
 IN STREAM WORK NOTES.



NOTE: SEE SHEET ER-05 FOR LEGEND AND NOTES.



**APEX**  
 CONSULTING ENGINEERS, LLC  
 111 E. Wacker Drive, Suite 520  
 Chicago, IL 60601

FILE NAME =  
 D160M61-SHT-ER05.dgn

USER NAME = Frank.Stallone  
 DESIGNED - L.N.  
 DRAWN - M.P.  
 CHECKED - W.H.I.  
 DATE - 03/13/2013

REVISED -  
 REVISED -  
 REVISED -  
 REVISED -

**STATE OF ILLINOIS  
 DEPARTMENT OF TRANSPORTATION**

**EROSION AND SEDIMENT CONTROL PLAN  
 US 45 (LAGRANGE ROAD) - MIDDLE CONTRACT - STAGE 1**

SCALE: 1"=50' SHEET NO. 2 OF 4 SHEETS STA. 195+00.00 TO STA. 225+00.00

F.A.P. RTE.	SECTION	COUNTY	TOTAL SHEETS	SHEET NO.
330	103R-4	COOK	877	132
<b>ER-07</b>			<b>CONTRACT NO. 60M61</b>	
ILLINOIS FED. AID PROJECT				