

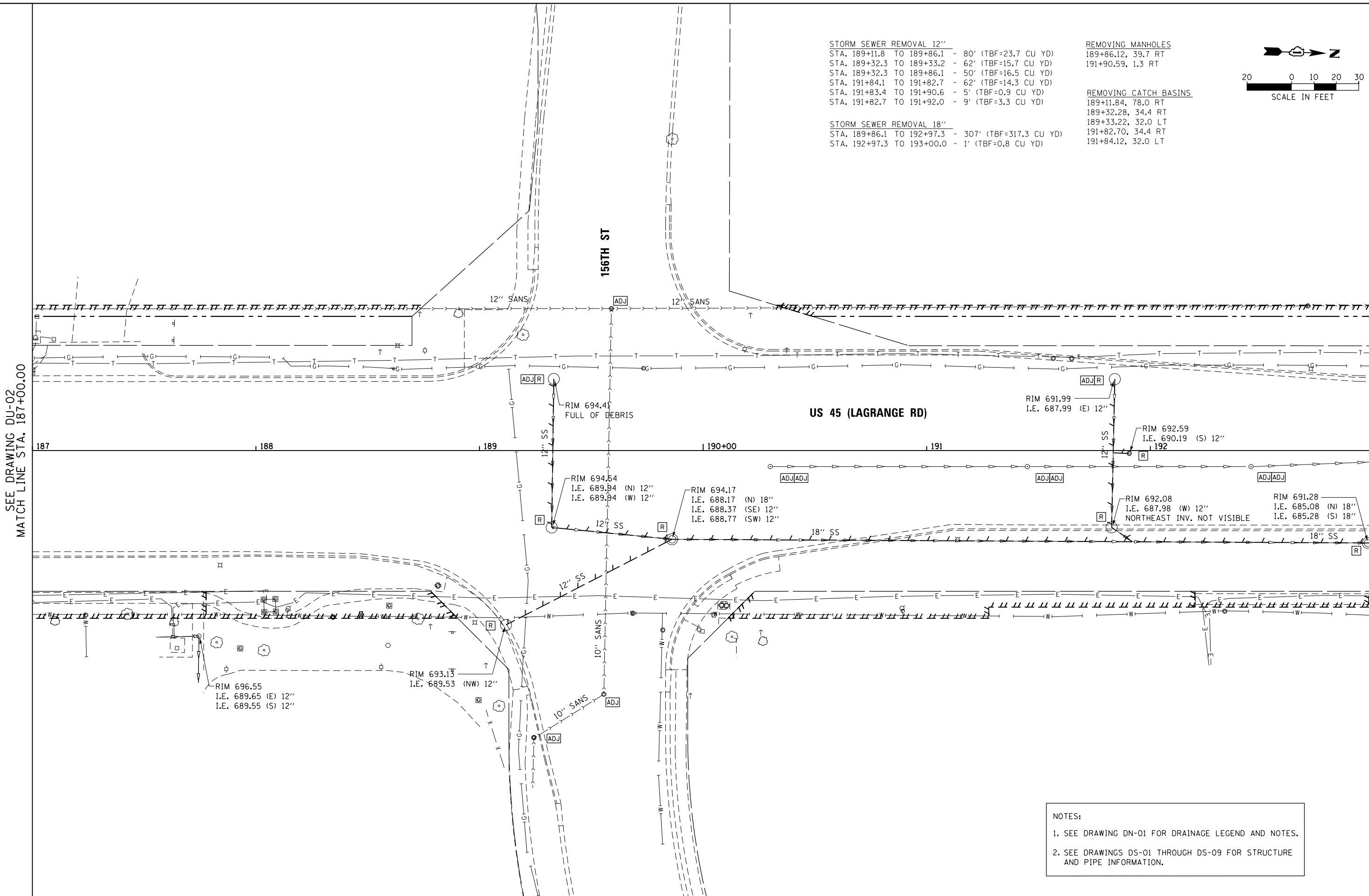
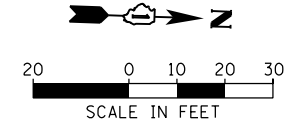
SEE DRAWING DU-02
MATCH LINE STA. 187+00.00

STORM SEWER REMOVAL 12"
STA. 189+11.8 TO 189+86.1 - 80' (TBF=23.7 CU YD)
STA. 189+32.3 TO 189+33.2 - 62' (TBF=15.7 CU YD)
STA. 189+32.3 TO 189+86.1 - 50' (TBF=16.5 CU YD)
STA. 191+84.1 TO 191+82.7 - 62' (TBF=14.3 CU YD)
STA. 191+83.4 TO 191+90.6 - 5' (TBF=0.9 CU YD)
STA. 191+82.7 TO 191+92.0 - 9' (TBF=3.3 CU YD)

STORM SEWER REMOVAL 18"
STA. 189+86.1 TO 192+97.3 - 307' (TBF=317.3 CU YD)
STA. 192+97.3 TO 193+00.0 - 1' (TBF=0.8 CU YD)

REMOVING MANHOLES
189+86.12, 39.7 RT
191+90.59, 1.3 RT

REMOVING CATCH BASINS
189+11.84, 78.0 RT
189+32.28, 34.4 RT
189+33.22, 32.0 LT
191+82.70, 34.4 RT
191+84.12, 32.0 LT



MATCH LINE STA. 193+00.00
SEE DRAWING DU-04

NOTES:
1. SEE DRAWING DN-01 FOR DRAINAGE LEGEND AND NOTES.
2. SEE DRAWINGS DS-01 THROUGH DS-09 FOR STRUCTURE AND PIPE INFORMATION.

FILE NAME = D160M61-SHT-DRAINEX03.dgn	USER NAME = Anthony.Plutz	DESIGNED - EJD	REVISED -	STATE OF ILLINOIS DEPARTMENT OF TRANSPORTATION	EXISTING DRAINAGE PLAN - US 45 (LAGRANGE ROAD)			F.A.P. RTE. = 330	SECTION = 103R-4	COUNTY = COOK	TOTAL SHEETS = 877	SHEET NO. = 161
	PLOT SCALE = 40.0000' / in.	CHECKED - JWM	REVISED -					DU-03		CONTRACT NO. 60M61		
SHT.PLAN	PLOT DATE = 3/14/2013	DATE = 03/13/2013	REVISED -	SCALE: 1"=20'			SHEET 3 OF 17 SHEETS	STA. 187+00.00 TO STA. 193+00.00		ILLINOIS FED. AID PROJECT		