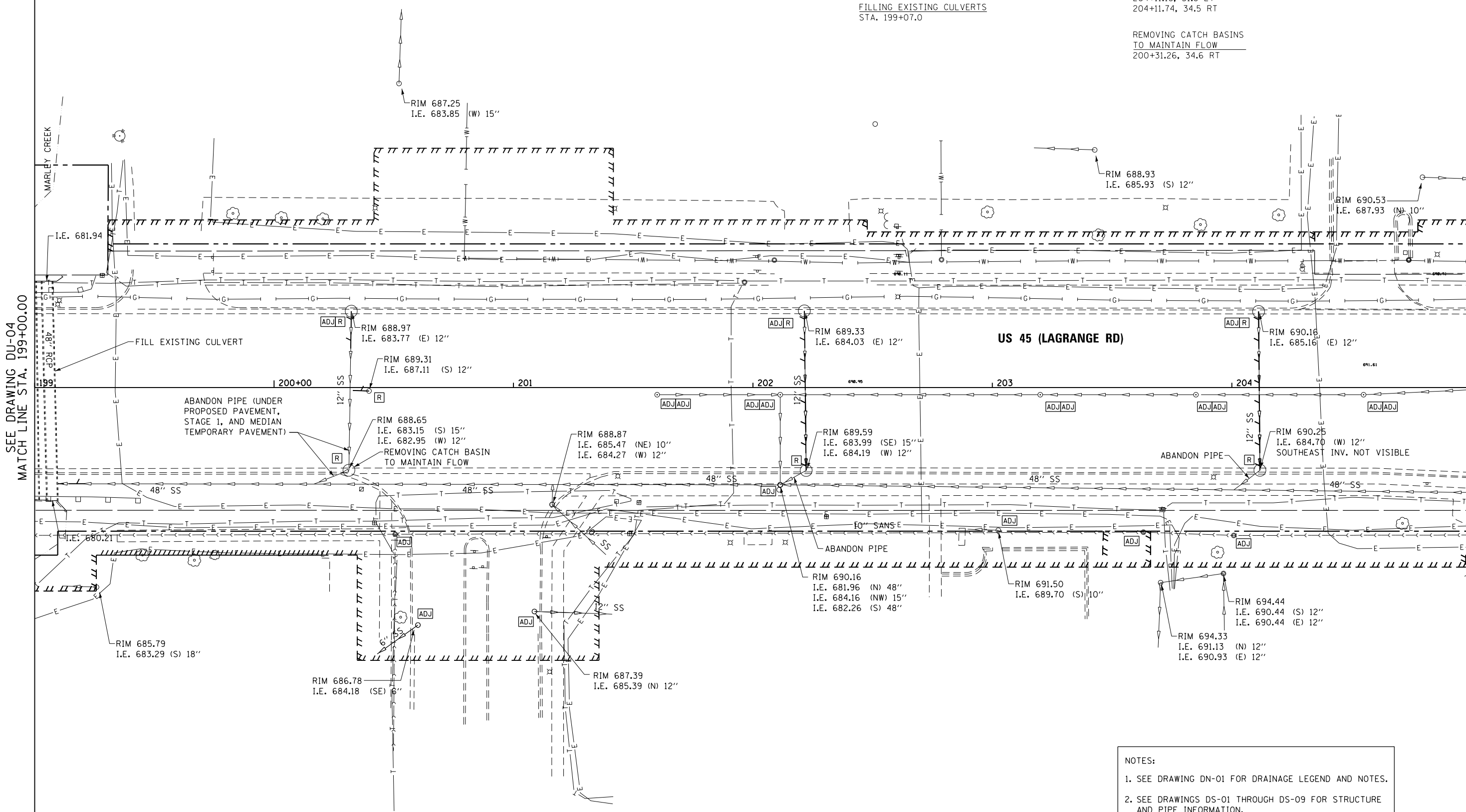


**STORM SEWER REMOVAL 12"**  
 STA. 200+31.3 TO 200+32.3 - 18' (TBF=6.6 CU YD)  
 STA. 200+31.8 TO 200+39.7 - 6' (TBF=2.4 CU YD)  
 STA. 202+21.5 TO 202+22.2 - 63' (TBF=23.0 CU YD)  
 STA. 204+11.2 TO 204+11.7 - 62' (TBF=22.3 CU YD)

**FILLING EXISTING CULVERTS**  
 STA. 199+07.0

**REMOVING CATCH BASINS**  
 200+32.25, 31.9 LT  
 200+39.67, 1.4 RT  
 202+21.48, 32.0 LT  
 202+22.23, 34.6 RT  
 204+11.18, 31.8 LT  
 204+11.74, 34.5 RT

**REMOVING CATCH BASINS TO MAINTAIN FLOW**  
 200+31.26, 34.6 RT



SEE DRAWING DU-04  
 MATCH LINE STA. 199+00.00

MATCH LINE STA. 205+00.00  
 SEE DRAWING DU-06

**NOTES:**

- SEE DRAWING DN-01 FOR DRAINAGE LEGEND AND NOTES.
- SEE DRAWINGS DS-01 THROUGH DS-09 FOR STRUCTURE AND PIPE INFORMATION.

**URS**  
 100 S. WACKER DR.  
 10TH FLOOR  
 CHICAGO, IL 60606  
 TEL (312) 935-1000  
 FAX (312) 935-4198

FILE NAME = D:\60M61-SHT-DRAINEX05.dgn	USER NAME = Anthony.Plutz	DESIGNED - EJD	REVISED -	<b>STATE OF ILLINOIS DEPARTMENT OF TRANSPORTATION</b>	<b>EXISTING DRAINAGE PLAN - US 55 (LAGRANGE ROAD)</b>			F.A.P. RTE. = 330	SECTION = 103R-4	COUNTY = COOK	TOTAL SHEETS = 877	SHEET NO. = 163
	PLOT SCALE = 48.0000' / in.	CHECKED - JWM	REVISED -					<b>DU-05</b>		<b>CONTRACT NO. 60M61</b>		
SHT.PLAN	PLOT DATE = 3/14/2013	DATE = 03/13/2013	REVISED -	SCALE: 1"=20'			SHEET 5 OF 17 SHEETS	STA. 199+00.00 TO STA. 205+00.00		ILLINOIS FED. AID PROJECT		