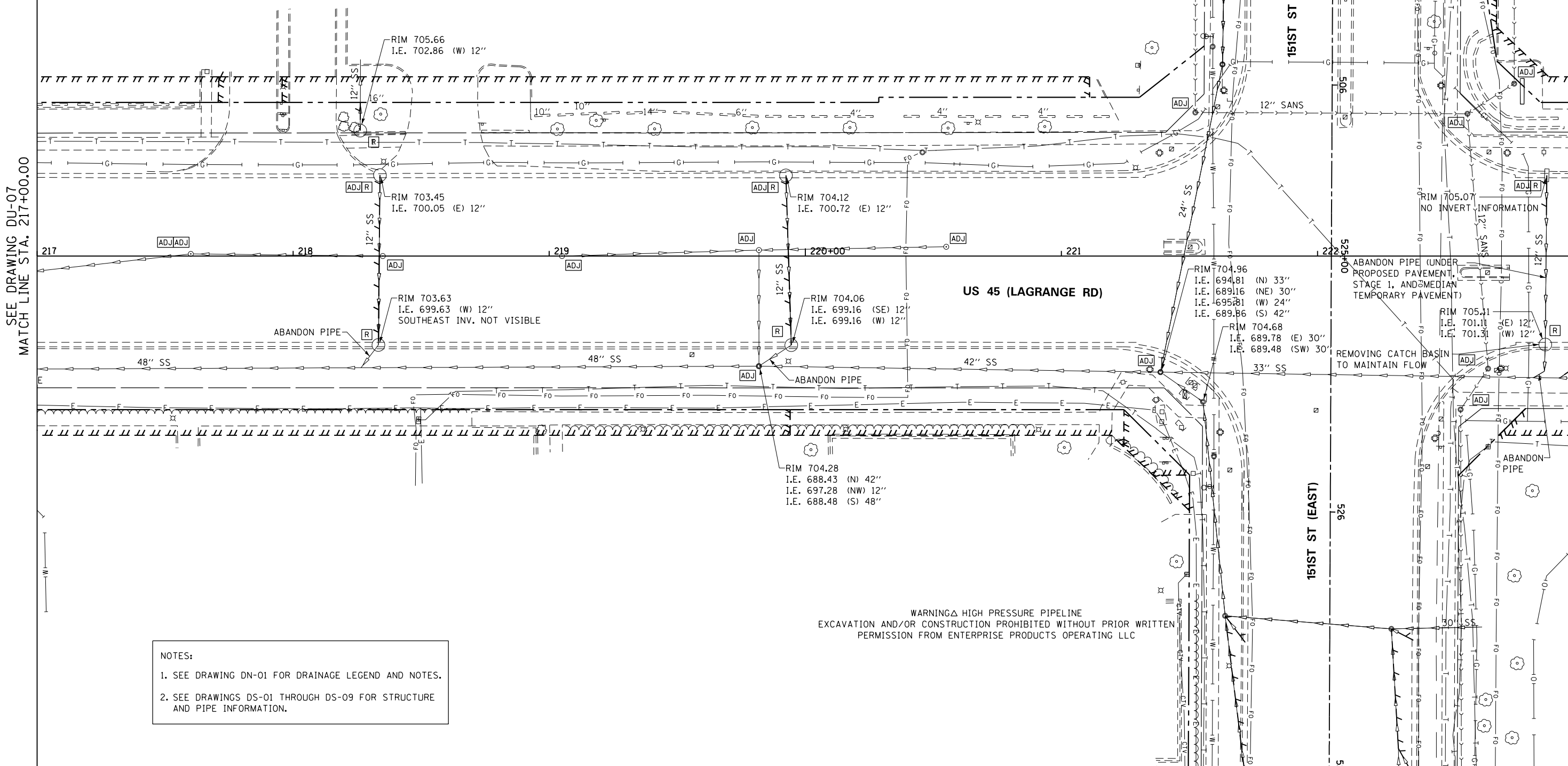


STORM SEWER REMOVAL 12"
 STA. 218+26.5 TO 218+33.3 - 62' (TBF=12.1 CU YD)
 STA. 218+33.3 TO 218+33.9 - 9' (TBF=14.1 CU YD)
 STA. 219+92.4 TO 219+94.5 - 62' (TBF=15.0 CU YD)
 STA. 222+89.0 TO 222+89.5 - 15' (TBF=4.0 CU YD)
 STA. 222+94.5 TO 223+00.0 - 4' (TBF=4.5 CU YD)

REMOVING INLETS
 218+26.19, 49.0 LT
 222+89.52, 31.5 LT

REMOVING CATCH BASINS
 218+33.31, 34.7 RT
 218+33.89, 31.6 LT
 219+92.42, 31.5 LT
 219+94.51, 34.7 RT

REMOVING CATCH BASINS
 TO MAINTAIN FLOW
 222+88.95, 34.6 RT



SEE DRAWING DU-07
 MATCH LINE STA. 217+00.00

MATCH LINE STA. 223+00.00
 SEE DRAWING DU-09

NOTES:
 1. SEE DRAWING DN-01 FOR DRAINAGE LEGEND AND NOTES.
 2. SEE DRAWINGS DS-01 THROUGH DS-09 FOR STRUCTURE AND PIPE INFORMATION.

WARNING HIGH PRESSURE PIPELINE
 EXCAVATION AND/OR CONSTRUCTION PROHIBITED WITHOUT PRIOR WRITTEN
 PERMISSION FROM ENTERPRISE PRODUCTS OPERATING LLC

URS
 100 S. WACKER DR.
 CHICAGO, IL 60606
 TEL (312) 939-1000
 FAX (312) 939-4998

FILE NAME = D160M61-SHT-DRAINEX08.dgn	USER NAME = Anthony.Plutz	DESIGNED - EJD	REVISED -	STATE OF ILLINOIS DEPARTMENT OF TRANSPORTATION	EXISTING DRAINAGE PLAN - US 45 (LAGRANGE ROAD)			F.A.P. RTE. 330	SECTION 103R-4	COUNTY COOK	TOTAL SHEETS 877	SHEET NO. 166
SHT.PLAN	PLOT SCALE = 48.0000' / in.	CHECKED - JWM	REVISED -		SCALE: 1"=20'	SHEET 8 OF 17 SHEETS	STA. 217+00.00 TO STA. 223+00.00	DU-08		CONTRACT NO. 60M61		
	PLOT DATE = 3/14/2013	DATE - 03/13/2013	REVISED -		ILLINOIS FED. AID PROJECT							