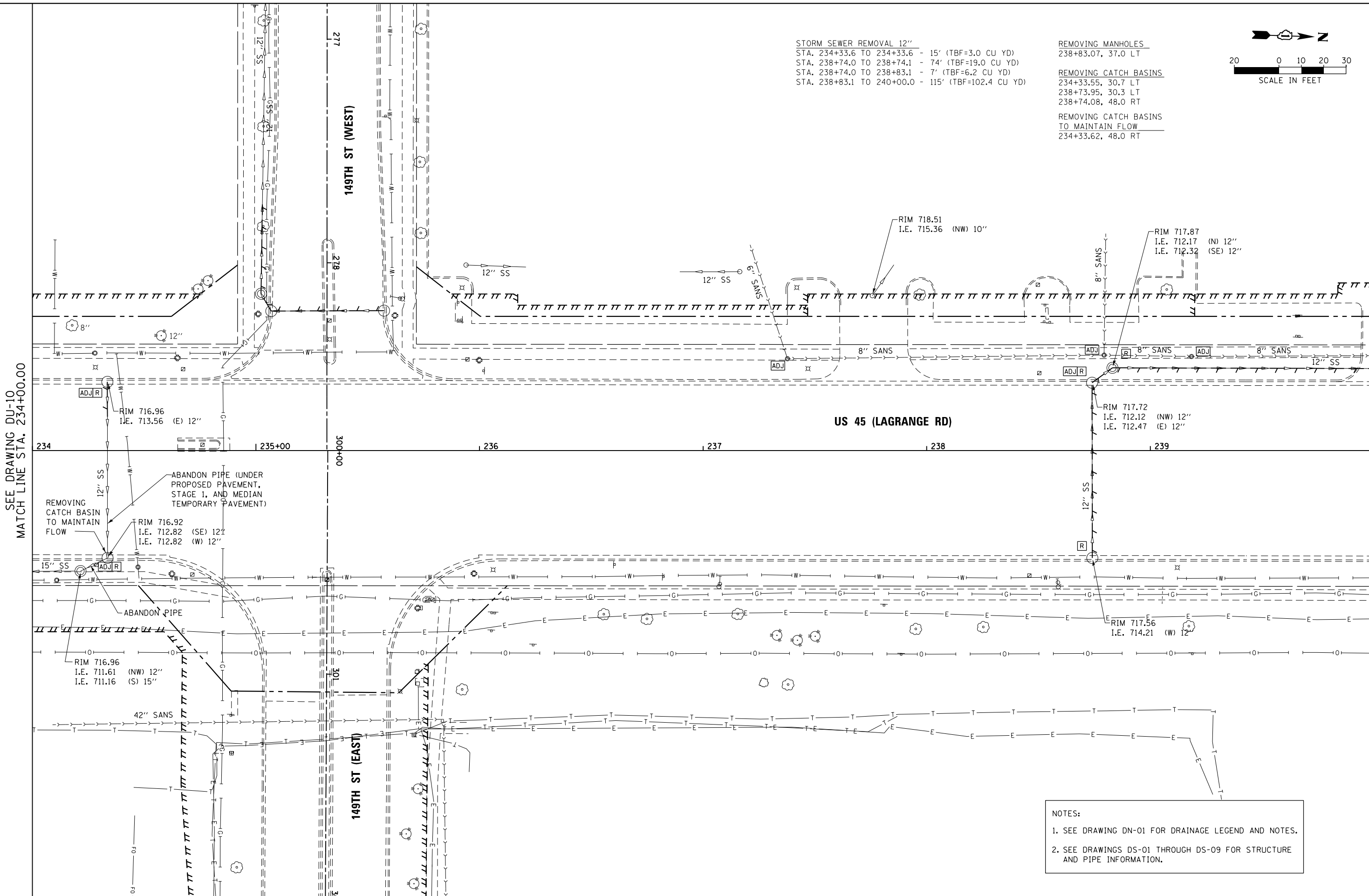


STORM SEWER REMOVAL 12"
 STA. 234+33.6 TO 234+33.6 - 15' (TBF=3.0 CU YD)
 STA. 238+74.0 TO 238+74.1 - 74' (TBF=19.0 CU YD)
 STA. 238+74.0 TO 238+83.1 - 7' (TBF=6.2 CU YD)
 STA. 238+83.1 TO 240+00.0 - 115' (TBF=102.4 CU YD)

REMOVING MANHOLES
 238+83.07, 37.0 LT

REMOVING CATCH BASINS
 234+33.55, 30.7 LT
 238+73.95, 30.3 LT
 238+74.08, 48.0 RT

REMOVING CATCH BASINS
 TO MAINTAIN FLOW
 234+33.62, 48.0 RT



SEE DRAWING DU-10
 MATCH LINE STA. 234+00.00

MATCH LINE STA. 240+00.00
 SEE DRAWING DU-12

NOTES:
 1. SEE DRAWING DN-01 FOR DRAINAGE LEGEND AND NOTES.
 2. SEE DRAWINGS DS-01 THROUGH DS-09 FOR STRUCTURE AND PIPE INFORMATION.

URS
 100 S. WACKER DR.
 SUITE 600
 CHICAGO, IL 60606
 TEL (312) 935-1000
 FAX (312) 935-4998

FILE NAME = D160M61-SHT-DRAINEX11.dgn
 SHT.PLAN

USER NAME = Anthony.Plutz
 PLOT SCALE = 48.0000' / in.
 PLOT DATE = 3/14/2013

DESIGNED - EJD
 DRAWN - EJD
 CHECKED - JWM
 DATE - 03/13/2013

REVISED -
 REVISED -
 REVISED -
 REVISED -

STATE OF ILLINOIS
 DEPARTMENT OF TRANSPORTATION

EXISTING DRAINAGE PLAN - US 55 (LAGRANGE ROAD)

SCALE: 1"=20' SHEET 11 OF 17 SHEETS STA. 234+00.00 TO STA. 240+00.00

F.A.P. RTE.	SECTION	COUNTY	TOTAL SHEETS	SHEET NO.
330	103R-4	COOK	877	169
DU-11			CONTRACT NO. 60M61	
ILLINOIS FED. AID PROJECT				