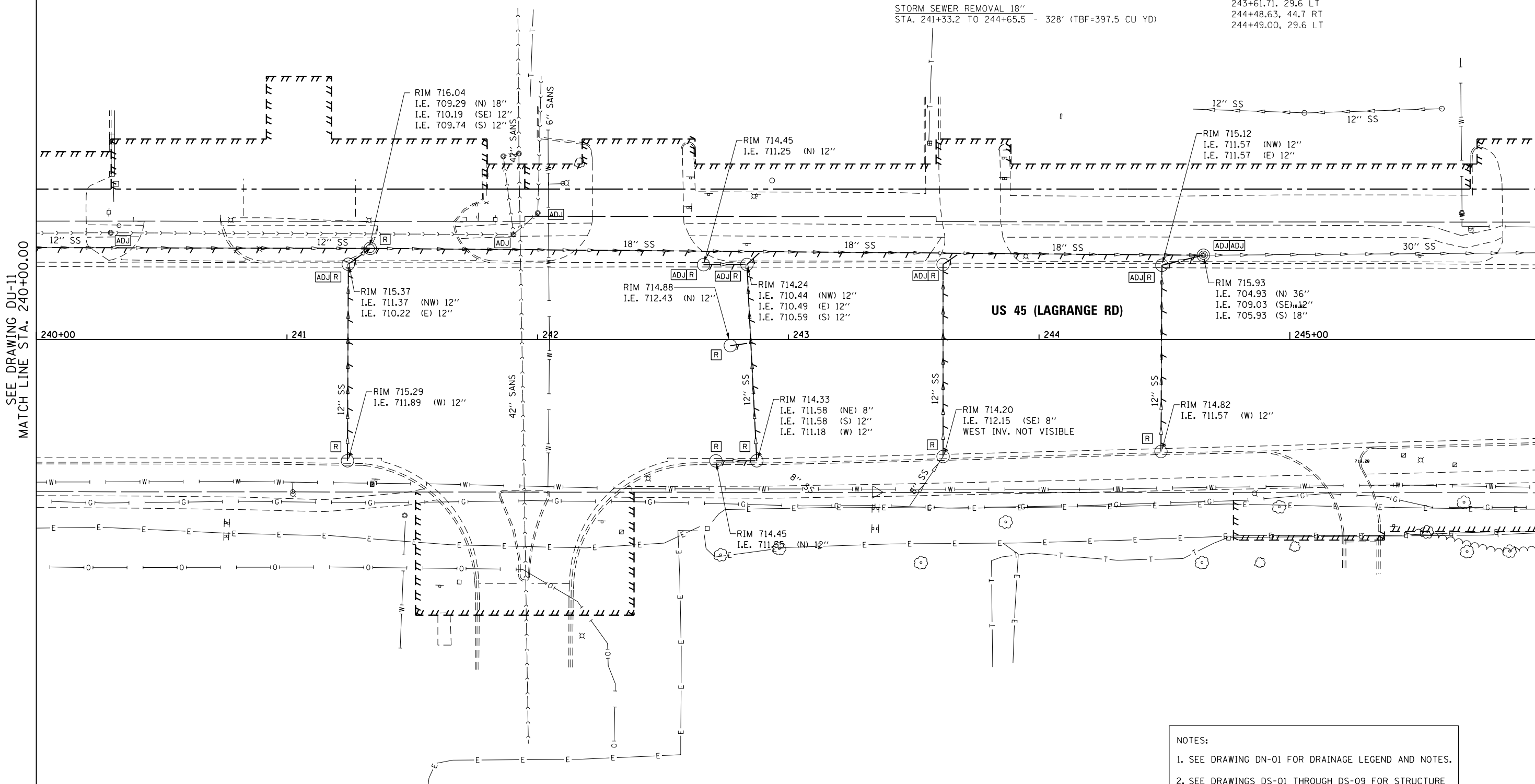
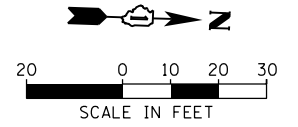


STORM SEWER REMOVAL 12"  
 STA. 240+00.0 TO 241+33.2 - 131' (TBF=102.4 CU YD)  
 STA. 241+24.1 TO 241+24.5 - 74' (TBF=14.4 CU YD)  
 STA. 241+24.5 TO 241+33.2 - 7' (TBF=2.6 CU YD)  
 STA. 242+66.2 TO 242+83.5 - 13' (TBF=2.2 CU YD)  
 STA. 242+71.1 TO 242+87.4 - 12' (TBF=2.0 CU YD)  
 STA. 242+76.8 TO 242+85.0 - 6' (TBF=2.1 CU YD)  
 STA. 242+83.5 TO 242+87.4 - 6' (TBF=2.5 CU YD)  
 STA. 243+61.7 TO 243+68.3 - 85' (TBF=13.4 CU YD)  
 STA. 244+48.6 TO 244+49.0 - 70' (TBF=11.2 CU YD)  
 STA. 244+49.0 TO 244+65.5 - 13' (TBF=5.6 CU YD)

REMOVING MANHOLES  
 241+33.18, 36.3 LT  
 244+65.51, 33.6 LT

REMOVING CATCH BASINS  
 241+24.14, 48.4 RT  
 241+24.47, 30.4 LT  
 242+66.17, 29.9 LT  
 242+71.10, 48.4 RT  
 242+76.83, 2.4 RT  
 242+83.46, 30.0 LT  
 242+87.38, 48.4 RT  
 243+61.71, 46.7 RT  
 243+61.71, 29.6 LT  
 244+48.63, 44.7 RT  
 244+49.00, 29.6 LT

STORM SEWER REMOVAL 18"  
 STA. 241+33.2 TO 244+65.5 - 328' (TBF=397.5 CU YD)



SEE DRAWING DU-11  
 MATCH LINE STA. 240+00.00

MATCH LINE STA. 246+00.00  
 SEE DRAWING DU-13

NOTES:  
 1. SEE DRAWING DN-01 FOR DRAINAGE LEGEND AND NOTES.  
 2. SEE DRAWINGS DS-01 THROUGH DS-09 FOR STRUCTURE AND PIPE INFORMATION.

100 S. WACKER DR.  
 SUITE 600  
 CHICAGO, IL 60606  
 TEL (312) 939-1000  
 FAX (312) 939-4998



FILE NAME = D160M61-SHT-DRAINEX12.dgn	USER NAME = Anthony.Plutz	DESIGNED - EJD	REVISED -	STATE OF ILLINOIS DEPARTMENT OF TRANSPORTATION	EXISTING DRAINAGE PLAN - US 55 (LAGRANGE ROAD)			F.A.P. RTE. 330	SECTION 103R-4	COUNTY COOK	TOTAL SHEETS 877	SHEET NO. 170
	PLOT SCALE = 48.0000' / in.	CHECKED - JWM	REVISED -		SCALE: 1"=20'	SHEET 12 OF 17 SHEETS	STA. 240+00.00 TO STA. 246+00.00	DU-12		CONTRACT NO. 60M61	ILLINOIS FED. AID PROJECT	
SHT.PLAN	PLOT DATE = 3/14/2013	DATE - 03/13/2013	REVISED -									