

SEE DRAWING DU-12
 MATCH LINE STA. 246+00.00

FILE NAME =
 D160M61-SHT-DRAINEX13.dgn
 SHT.PLAN

USER NAME = Anthony.Plutz
 DESIGNED - EJD
 DRAWN - EJD
 PLOT SCALE = 48.0000' / in.
 CHECKED - JWM
 PLOT DATE = 3/14/2013
 DATE - 03/13/2013

REVISED -
 REVISED -
 REVISED -
 REVISED -

**STATE OF ILLINOIS
 DEPARTMENT OF TRANSPORTATION**

EXISTING DRAINAGE PLAN - US 45 (LAGRANGE ROAD)

SCALE: 1"=20' SHEET 13 OF 17 SHEETS STA. 246+00.00 TO STA. 252+00.00

F.A.P. RTE.	SECTION	COUNTY	TOTAL SHEETS	SHEET NO.
330	103R-4	COOK	877	171
DU-13			CONTRACT NO. 60M61	
ILLINOIS FED. AID PROJECT				

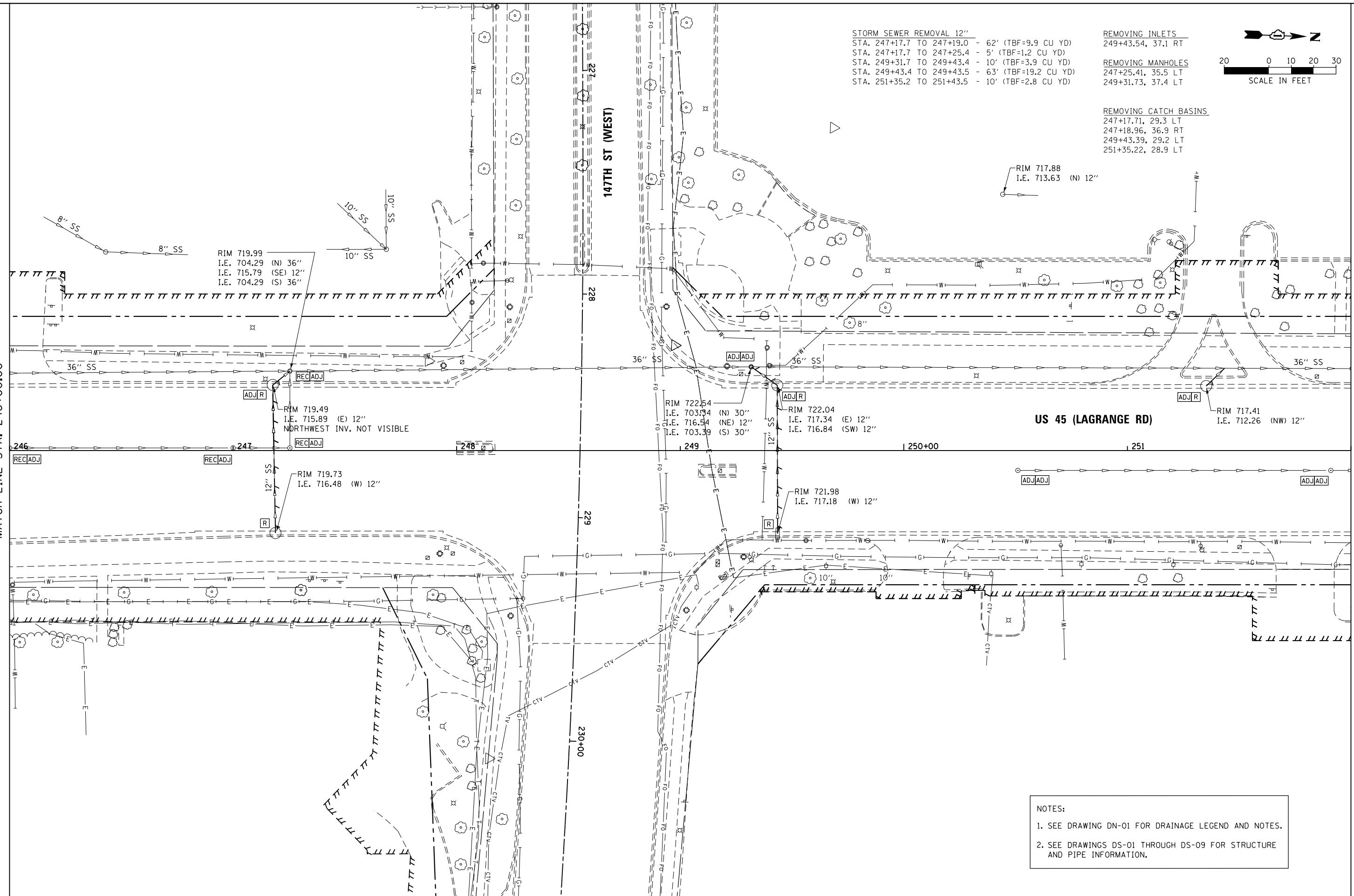
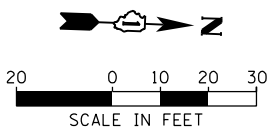
NOTES:
 1. SEE DRAWING DN-01 FOR DRAINAGE LEGEND AND NOTES.
 2. SEE DRAWINGS DS-01 THROUGH DS-09 FOR STRUCTURE AND PIPE INFORMATION.

STORM SEWER REMOVAL 12"
 STA. 247+17.7 TO 247+19.0 - 62' (TBF=9.9 CU YD)
 STA. 247+17.7 TO 247+25.4 - 5' (TBF=1.2 CU YD)
 STA. 249+31.7 TO 249+43.4 - 10' (TBF=3.9 CU YD)
 STA. 249+43.4 TO 249+43.5 - 63' (TBF=19.2 CU YD)
 STA. 251+35.2 TO 251+43.5 - 10' (TBF=2.8 CU YD)

REMOVING INLETS
 249+43.54, 37.1 RT

REMOVING MANHOLES
 247+25.41, 35.5 LT
 249+31.73, 37.4 LT

REMOVING CATCH BASINS
 247+17.71, 29.3 LT
 247+18.96, 36.9 RT
 249+43.39, 29.2 LT
 251+35.22, 28.9 LT



MATCH LINE STA. 252+00.00
 SEE DRAWING DU-14