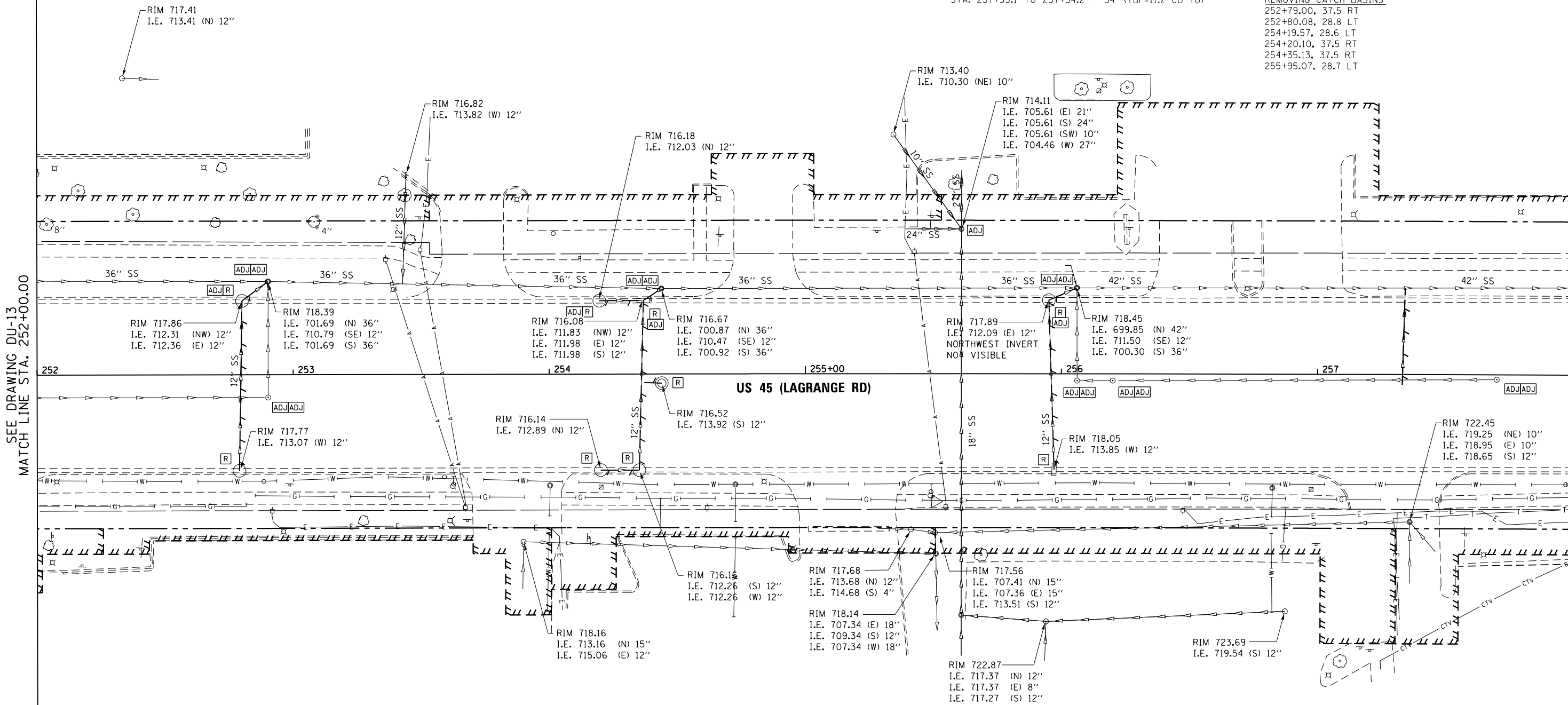
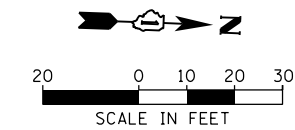


STORM SEWER REMOVAL 12"
 STA. 252+79.0 TO 252+80.1 - 62' (TBF=21.2 CU YD)
 STA. 252+80.1 TO 252+90.3 - 8' (TBF=6.1 CU YD)
 STA. 254+19.6 TO 254+36.8 - 14' (TBF=3.4 CU YD)
 STA. 254+20.1 TO 254+35.1 - 14' (TBF=2.5 CU YD)
 STA. 254+35.1 TO 254+36.8 - 62' (TBF=14.0 CU YD)
 STA. 254+36.0 TO 254+43.9 - 6' (TBF=2.1 CU YD)
 STA. 254+36.8 TO 254+43.8 - 5' (TBF=1.8 CU YD)
 STA. 255+95.1 TO 255+97.1 - 63' (TBF=20.8 CU YD)
 STA. 255+95.1 TO 256+06.0 - 8' (TBF=5.4 CU YD)
 STA. 257+33.1 TO 257+34.2 - 34' (TBF=11.2 CU YD)

REMOVING INLETS
 254+36.80, 28.7 LT
 255+97.14, 37.3 RT

REMOVING MANHOLES
 252+90.25, 36.4 LT
 254+43.83, 33.3 LT
 254+43.94, 3.6 RT
 256+06.03, 33.5 LT

REMOVING CATCH BASINS
 252+79.00, 37.5 RT
 252+80.08, 28.8 LT
 254+19.57, 28.6 LT
 254+20.10, 37.5 RT
 254+35.13, 37.5 RT
 255+95.07, 28.7 LT



SEE DRAWING DU-13
 MATCH LINE STA. 252+00.00

MATCH LINE STA. 258+00.00
 SEE DRAWING DU-15

NOTES:
 1. SEE DRAWING DN-01 FOR DRAINAGE LEGEND AND NOTES.
 2. SEE DRAWINGS DS-01 THROUGH DS-09 FOR STRUCTURE AND PIPE INFORMATION.

100 S. WACKER DR.
 SUITE 600
 CHICAGO, IL 60606
 TEL (312) 939-1000
 FAX (312) 939-4998

URS

FILE NAME = D160M61-SHT-DRAINEX14.dgn	USER NAME = Anthony.Plutz	DESIGNED - EJD	REVISED -	STATE OF ILLINOIS DEPARTMENT OF TRANSPORTATION	EXISTING DRAINAGE PLAN - US 45 (LAGRANGE ROAD)			F.A.P. RFE. 330	SECTION 103R-4	COUNTY COOK	TOTAL SHEETS 877	SHEET NO. 172
SHT.PLAN	PLOT SCALE = 48.0000' / in.	CHECKED - JWM	REVISED -		SCALE: 1"=20'	SHEET 14 OF 17 SHEETS	STA. 252+00.00 TO STA. 258+00.00	DU-14		CONTRACT NO. 60M61		
	PLOT DATE = 3/14/2013	DATE - 03/13/2013	REVISED -		ILLINOIS FED. AID PROJECT							