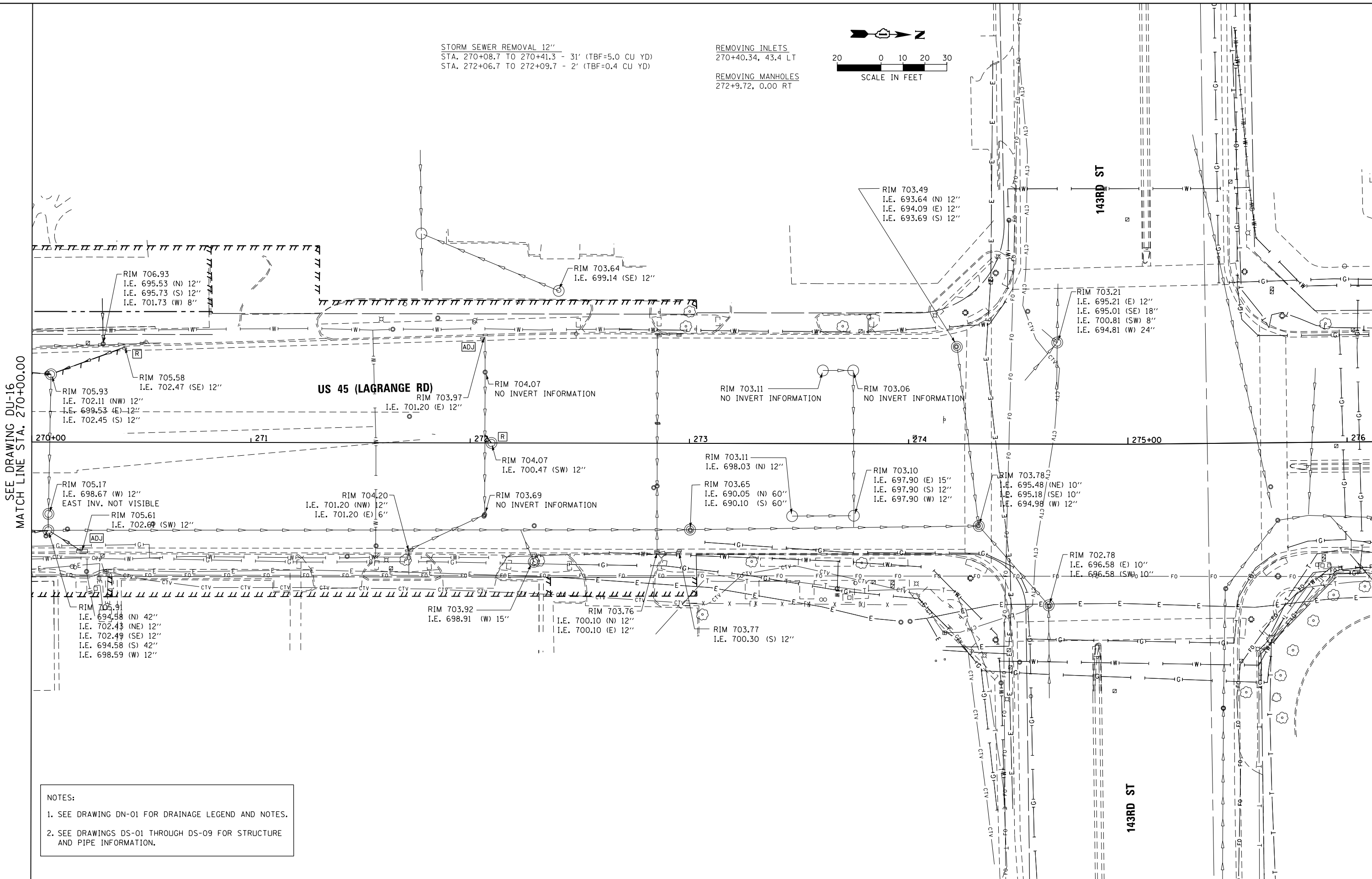
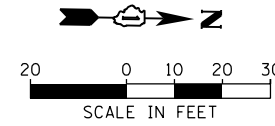


STORM SEWER REMOVAL 12"
 STA. 270+08.7 TO 270+41.3 - 31' (TBF=5.0 CU YD)
 STA. 272+06.7 TO 272+09.7 - 2' (TBF=0.4 CU YD)

REMOVING INLETS
 270+40.34, 43.4 LT
 REMOVING MANHOLES
 272+9.72, 0.00 RT



SEE DRAWING DU-16
 MATCH LINE STA. 270+00.00

NOTES:
 1. SEE DRAWING DN-01 FOR DRAINAGE LEGEND AND NOTES.
 2. SEE DRAWINGS DS-01 THROUGH DS-09 FOR STRUCTURE AND PIPE INFORMATION.

URS
 100 S. WACKER DR.
 CHICAGO, IL 60606
 TEL (312) 935-1000
 FAX (312) 935-4998

FILE NAME = D160M61-SHT-DRAINEX17.dgn	USER NAME = Anthony.Plutz	DESIGNED - EJD	REVISED -
SHT.PLAN	PLOT SCALE = 48.0000' / in.	DRAWN - EJD	REVISED -
	PLOT DATE = 3/14/2013	CHECKED - JWM	REVISED -
		DATE - 03/13/2013	REVISED -

STATE OF ILLINOIS
 DEPARTMENT OF TRANSPORTATION

EXISTING DRAINAGE PLAN - US 55 (LAGRANGE ROAD)
 SCALE: 1"=20' SHEET 17 OF 17 SHEETS STA. 270+00.00 TO STA. END

F.A.P. RTE. 330	SECTION 103R-4	COUNTY COOK	TOTAL SHEETS 877	SHEET NO. 175
DU-17		CONTRACT NO. 60M61		
ILLINOIS FED. AID PROJECT				