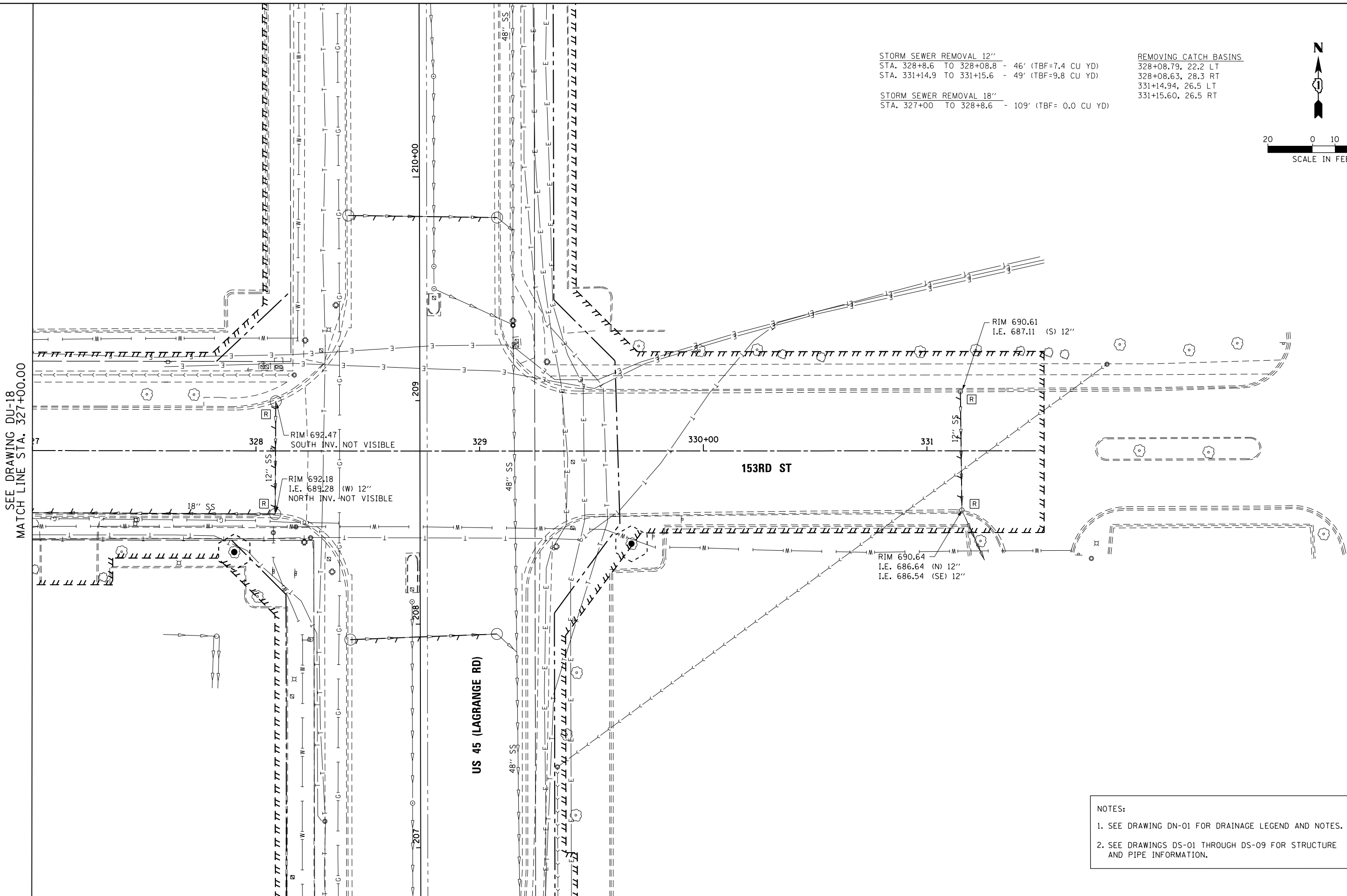
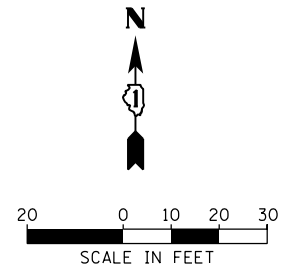


STORM SEWER REMOVAL 12"
 STA. 328+8.6 TO 328+08.8 - 46' (TBF=7.4 CU YD)
 STA. 331+14.9 TO 331+15.6 - 49' (TBF=9.8 CU YD)

STORM SEWER REMOVAL 18"
 STA. 327+00 TO 328+8.6 - 109' (TBF= 0.0 CU YD)

REMOVING CATCH BASINS
 328+08.79, 22.2 LT
 328+08.63, 28.3 RT
 331+14.94, 26.5 LT
 331+15.60, 26.5 RT



SEE DRAWING DU-18
 MATCH LINE STA. 327+00.00

NOTES:
 1. SEE DRAWING DN-01 FOR DRAINAGE LEGEND AND NOTES.
 2. SEE DRAWINGS DS-01 THROUGH DS-09 FOR STRUCTURE AND PIPE INFORMATION.

URS
 100 S. WACKER DR.
 SUITE 600
 CHICAGO, IL 60606
 TEL (312) 935-1000
 FAX (312) 935-4998

FILE NAME = D160M61-SHT-DRAINEX19.dgn
 SHT.PLAN

USER NAME = Anthony.Plutz
 DESIGNED - EJD
 DRAWN - EJD
 CHECKED - JWM
 DATE - 03/13/2013

REVISED -
 REVISED -
 REVISED -
 REVISED -

STATE OF ILLINOIS
 DEPARTMENT OF TRANSPORTATION

EXISTING DRAINAGE PLAN - 153RD STREET
 SCALE: 1"=20' SHEET 2 OF 2 SHEETS STA. 327+00.00 TO STA. END

F.A.P. RTE.	SECTION	COUNTY	TOTAL SHEETS	SHEET NO.
330	103R-4	COOK	877	177
DU-19			CONTRACT NO. 60M61	
ILLINOIS FED. AID PROJECT				