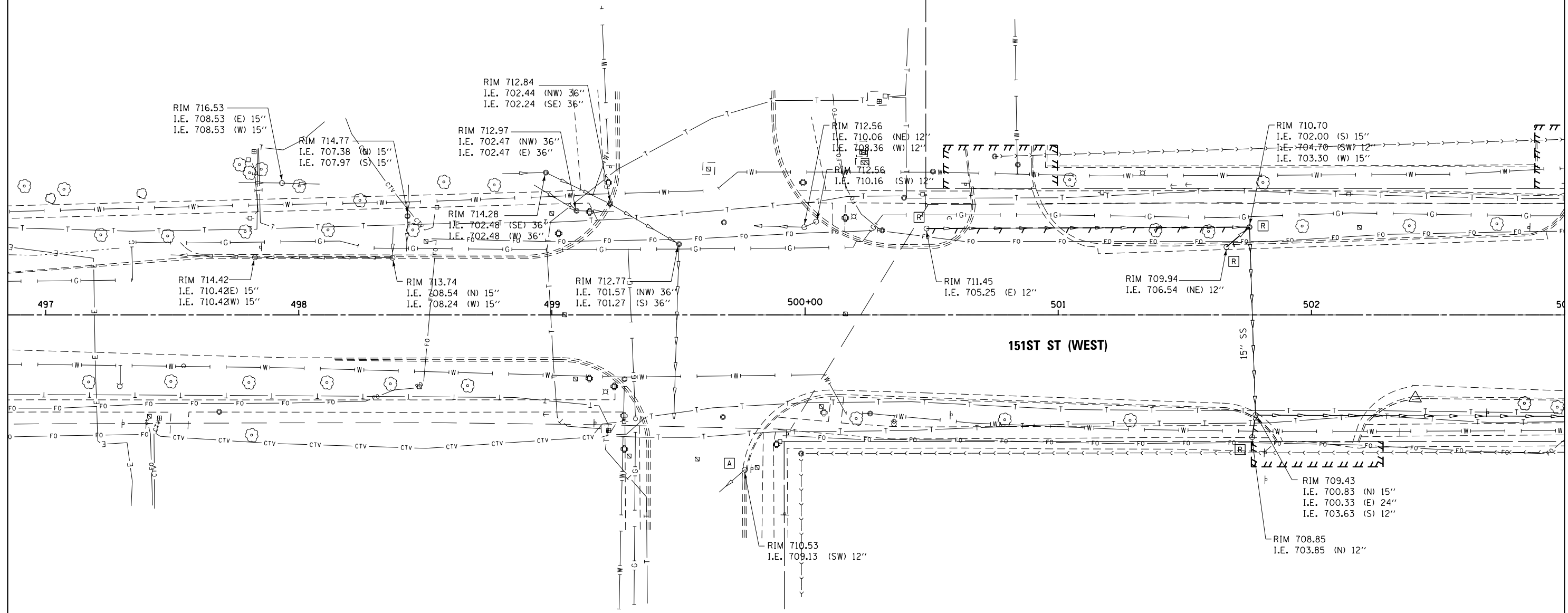


STORM SEWER REMOVAL 12"  
 STA. 500+48.0 TO 501+82.8 - 135' (TBF= 0.0 CU YD)  
 STA. 500+66.4 TO 501+75.6 - 8' (TBF=2.4 CU YD)  
 STA. 500+76.6 TO 501+77.9 - 5' (TBF=3.6 CU YD)

REMOVING CATCH BASINS  
 500+47.98, 34.1 LT  
 501+66.44, 26.8 LT  
 501+76.58, 48.3 RT

REMOVING MANHOLES  
 500+76.65, 34.7 LT



MATCH LINE STA. 503+00.00  
SEE DRAWING DU-21

NOTES:  
 1. SEE DRAWING DN-01 FOR DRAINAGE LEGEND AND NOTES.  
 2. SEE DRAWINGS DS-01 THROUGH DS-09 FOR STRUCTURE AND PIPE INFORMATION.

**URS**  
 100 S. WACKER DR.  
 SUITE 600  
 CHICAGO, IL 60606  
 TEL (312) 939-1000  
 FAX (312) 939-4198

FILE NAME = D160M61-SHT-DRAINEX20.dgn	USER NAME = Anthony.Plutz	DESIGNED - EJD	REVISED -
		DRAWN - EJD	REVISED -
		CHECKED - JWM	REVISED -
SHT.PLAN	PLOT DATE = 3/14/2013	DATE - 03/13/2013	REVISED -

**STATE OF ILLINOIS  
DEPARTMENT OF TRANSPORTATION**

**EXISTING DRAINAGE PLAN - 151ST STREET**

SCALE: 1"=20' SHEET 1 OF 3 SHEETS STA. BEGIN TO STA. 503+00.00

F.A.P. R.T.E.	SECTION	COUNTY	TOTAL SHEETS	SHEET NO.
330	103R-4	COOK	877	178
<b>DU-20</b>			<b>CONTRACT NO. 60M61</b>	
ILLINOIS FED. AID PROJECT				