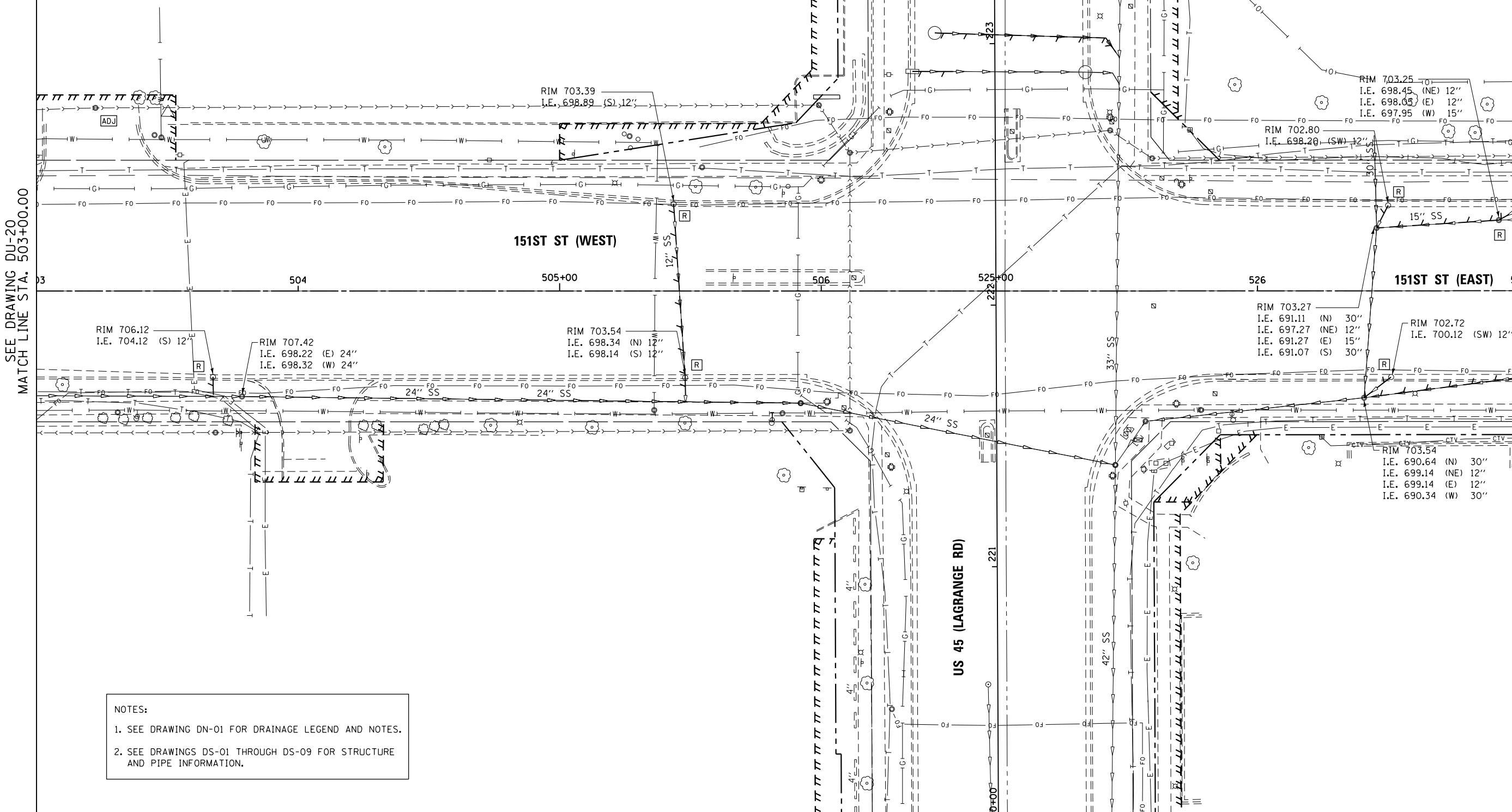
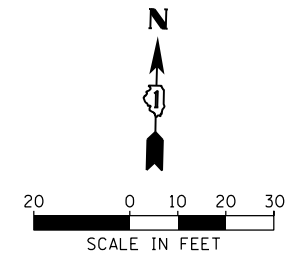


STORM SEWER REMOVAL 12"
 STA. 503+67.5 TO 503+67.7 - 4' (TBF=1.6 CU YD)
 STA. 505+43.6 TO 505+48.0 - 63' (TBF=19.9 CU YD)
 STA. 505+48.0 TO 505+48.2 - 6' (TBF=5.3 CU YD)
 STA. 526+40.7 TO 526+51.1 - 9' (TBF=1.4 CU YD)
 STA. 526+40.7 TO 527+02.6 - 58' (TBF=11.8 CU YD)
 STA. 526+45.6 TO 526+50.0 - 5' (TBF=1.8 CU YD)
 STA. 526+92.3 TO 527+04.0 - 9' (TBF=2.5 CU YD)

STORM SEWER REMOVAL 15"
 STA. 526+45.6 TO 526+92.3 - 43' (TBF=48.9 CU YD)

REMOVING MANHOLES
 526+92.32, 27.0 LT

REMOVING CATCH BASINS
 503+67.45, 32.9 RT
 505+43.58, 33.3 LT
 505+47.98, 33.11 RT
 526+49.95, 32.7 LT
 526+51.10, 32.9 RT



SEE DRAWING DU-20
 MATCH LINE STA. 503+00.00

MATCH LINE STA. 527+00.00
 SEE DRAWING DU-22

NOTES:
 1. SEE DRAWING DN-01 FOR DRAINAGE LEGEND AND NOTES.
 2. SEE DRAWINGS DS-01 THROUGH DS-09 FOR STRUCTURE AND PIPE INFORMATION.

URS
 100 S. WACKER DR.
 CHICAGO, IL 60606
 TEL (312) 935-1000
 FAX (312) 935-4998

FILE NAME = D160M61-SHT-DR1NEX21.dgn	USER NAME = Anthony.Plutz	DESIGNED - EJD	REVISED -	STATE OF ILLINOIS DEPARTMENT OF TRANSPORTATION	EXISTING DRAINAGE PLAN - 151ST STREET			F.A.P. RFE. 330	SECTION 103R-4	COUNTY COOK	TOTAL SHEETS 877	SHEET NO. 179
SHT.PLAN	PLOT SCALE = 48.0000' / in.	CHECKED - JWM	REVISED -		SCALE: 1"=20'	SHEET 2 OF 3 SHEETS	STA. 503+00.00 TO STA. 527+00.00	DU-21		CONTRACT NO. 60M61		
	PLOT DATE = 3/14/2013	DATE - 03/13/2013	REVISED -		ILLINOIS FED. AID PROJECT							