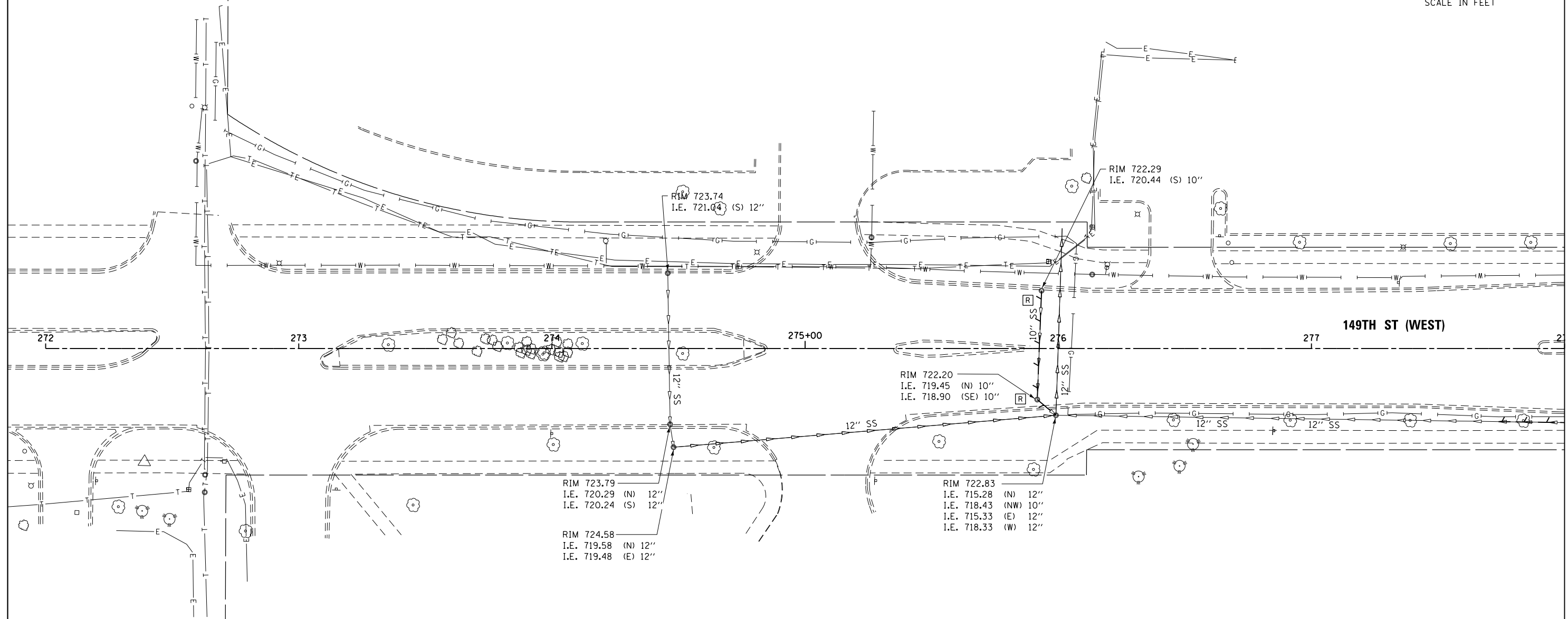
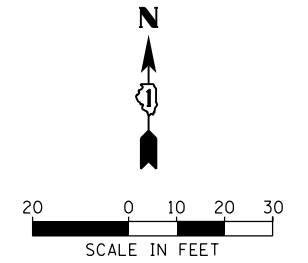


STORM SEWER REMOVAL 10"
 STA. 275+91.7 TO 275+93.4 - 39' (TBF=5.5 CU YD)
 STA. 275+91.7 TO 275+99.1 - 6' (TBF=1.1 CU YD)

REMOVING MANHOLES
 275+93.40, 22.9 LT
 278+91.71, 20.2 RT

STORM SEWER REMOVAL 12"
 STA. 277+73.94 TO 278+13.7 - 28' (TBF=6.1 CU YD)



MATCH LINE STA: 278+00.00
SEE DRAWING DU-24

NOTES:
 1. SEE DRAWING DN-01 FOR DRAINAGE LEGEND AND NOTES.
 2. SEE DRAWINGS DS-01 THROUGH DS-09 FOR STRUCTURE AND PIPE INFORMATION.

URS
 100 S. WACKER DR.
 SUITE 600
 CHICAGO, IL 60606
 TEL (312) 939-1000
 FAX (312) 939-4198

FILE NAME = D160M61-SHT-DRAINEX23.dgn	USER NAME = Anthony.Plutz	DESIGNED - EJD	REVISED -
SHT_PLAN	PLOT SCALE = 48.0000' / in.	DRAWN - EJD	REVISED -
	PLOT DATE = 3/14/2013	CHECKED - JWM	REVISED -
		DATE - 03/13/2013	REVISED -

**STATE OF ILLINOIS
 DEPARTMENT OF TRANSPORTATION**

EXISTING DRAINAGE PLAN - 149TH STREET

SCALE: 1"=20' SHEET 1 OF 2 SHEETS STA. BEGIN TO STA. 278+00.00

F.A.P. RTE. 330	SECTION 103R-4	COUNTY COOK	TOTAL SHEETS 877	SHEET NO. 181
DU-23			CONTRACT NO. 60M61	
ILLINOIS FED. AID PROJECT				