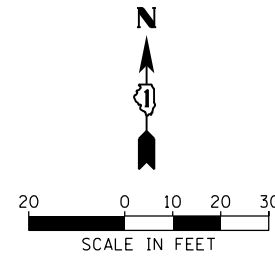


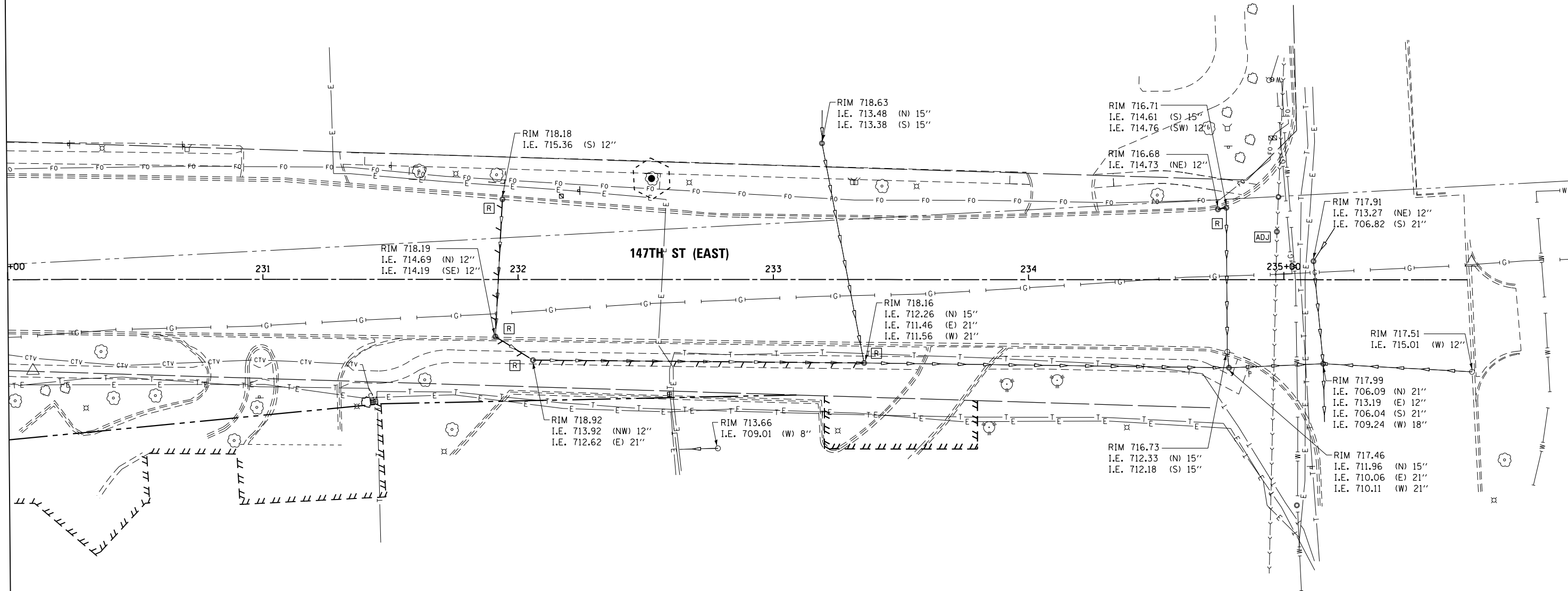
STORM SEWER REMOVAL 12"
 STA. 231+91.1 TO 231+93.8 - 50' (TBF=7.9 CU YD)
 STA. 231+91.1 TO 232+05.8 - 13' (TBF=3.8 CU YD)
 STA. 234+74.2 TO 234+77.5 - 1' (TBF=0.3 CU YD)

STORM SEWER REMOVAL 21"
 STA. 232+05.8 TO 233+35.6 - 126' (TBF=124.4 CU YD)

REMOVING MANHOLES
 231+93.84, 31.4 LT
 231+91.11, 22.4 RT
 232+05.81, 31.6 RT
 233+35.56, 32.7 RT
 234+74.18, 27.6 LT



SEE DRAWING DU-25
 MATCH LINE STA. 230+00.00



NOTES:
 1. SEE DRAWING DN-01 FOR DRAINAGE LEGEND AND NOTES.
 2. SEE DRAWINGS DS-01 THROUGH DS-09 FOR STRUCTURE AND PIPE INFORMATION.

100 S. WACKER DR.
 SUITE 600
 CHICAGO, IL 60606
 TEL (312) 935-1000
 FAX (312) 935-4998

URS

FILE NAME =
 D160M61-SHT-DRAINEX26.dgn

SHT_PLAN

USER NAME = Anthony.Plutz

PLOT SCALE = 48.0000' / in.

PLOT DATE = 3/14/2013

DESIGNED - EJD
 DRAWN - EJD
 CHECKED - JWM
 DATE - 03/13/2013

REVISED -
 REVISED -
 REVISED -
 REVISED -

STATE OF ILLINOIS
 DEPARTMENT OF TRANSPORTATION

EXISTING DRAINAGE PLAN - 147TH STREET

SCALE: 1"=20' SHEET 2 OF 2 SHEETS STA. 230+00.00 TO STA. END

F.A.P. RTE.	SECTION	COUNTY	TOTAL SHEETS	SHEET NO.
330	103R-4	COOK	877	184
DU-26			CONTRACT NO. 60M61	
ILLINOIS FED. AID PROJECT				