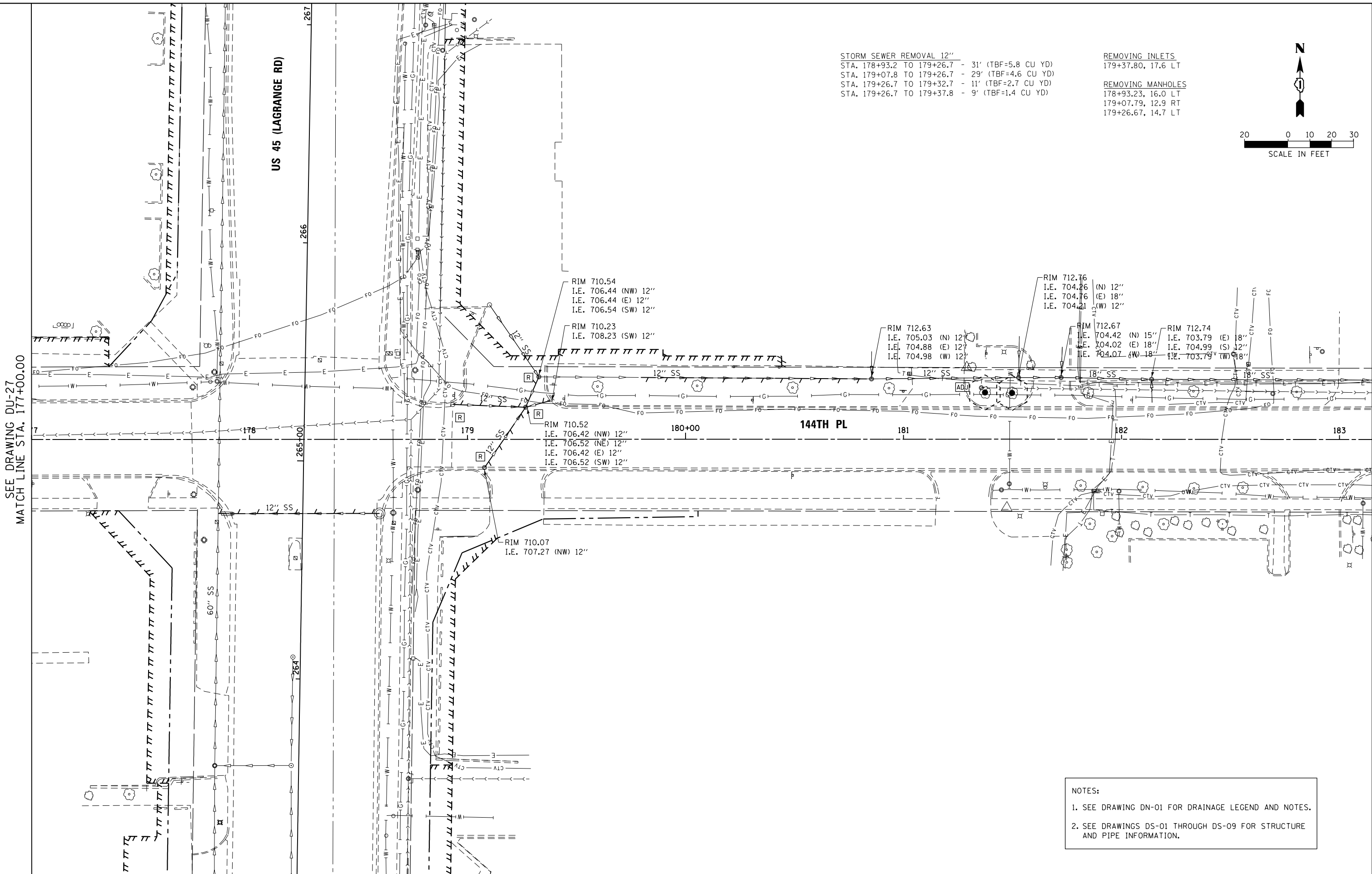
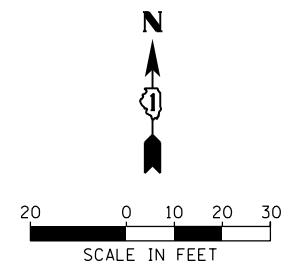


STORM SEWER REMOVAL 12"
 STA. 178+93.2 TO 179+26.7 - 31' (TBF=5.8 CU YD)
 STA. 179+07.8 TO 179+26.7 - 29' (TBF=4.6 CU YD)
 STA. 179+26.7 TO 179+32.7 - 11' (TBF=2.7 CU YD)

REMOVING INLETS
 179+37.80, 17.6 LT

REMOVING MANHOLES
 178+93.23, 16.0 LT
 179+07.79, 12.9 RT
 179+26.67, 14.7 LT



SEE DRAWING DU-27
 MATCH LINE STA. 177+00.00

NOTES:
 1. SEE DRAWING DN-01 FOR DRAINAGE LEGEND AND NOTES.
 2. SEE DRAWINGS DS-01 THROUGH DS-09 FOR STRUCTURE AND PIPE INFORMATION.

URS
 100 S. WACKER DR.
 SUITE 600
 CHICAGO, IL 60606
 TEL (312) 935-1000
 FAX (312) 935-4998

FILE NAME = D160M61-SHT-DRAINEX28.dgn	USER NAME = Anthony.Plutz	DESIGNED - EJD	REVISED -
		DRAWN - EJD	REVISED -
		CHECKED - JWM	REVISED -
SHT.PLAN	PLOT DATE = 3/14/2013	DATE - 03/13/2013	REVISED -

**STATE OF ILLINOIS
 DEPARTMENT OF TRANSPORTATION**

EXISTING DRAINAGE PLAN - 144TH PLACE

SCALE: 1"=20' SHEET 2 OF 2 SHEETS STA. 177+00.00 TO STA. END

F.A.P. RTE.	SECTION	COUNTY	TOTAL SHEETS	SHEET NO.
330	103R-4	COOK	877	186
DU-28			CONTRACT NO. 60M61	
ILLINOIS FED. AID PROJECT				