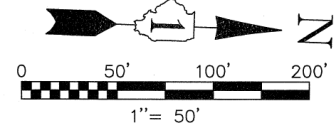


PT OF NW 1/4 SEC 15 & NE 1/4 SEC 16, T36N, R12E OF THE 3RD PM, COOK CO. IL

PARCEL No.	OWNER	TOTAL HOLDINGS (ACRES)	PART TAKEN (ACRES)	PREVIOUSLY DEDICATED (ACRES)	REMAINDER (ACRES)	EASEMENT AREA (ACRES)	PERMANENT INDEX NUMBER	PURPOSE OF EASEMENT	ACQUIRED BY
OH40032TE	LOWE'S HOME CENTERS, INC.	5.307	N/A	N/A	N/A	304 SQ. FT.	27-15-100-052	TEMPORARY	
OH40033	INLAND ORLAND PARK PLACE IV, LLC	3.335	0.065	0.000	3.269	0.125	27-15-100-053	TEMPORARY	
OH40034-A	INLAND ORLAND PARK PLACE, LLC	28.602	0.013	0.000	28.416	0.081	27-15-100-048	TEMPORARY	
OH40034E-A			N/A	N/A		N/A	27-15-100-014	TEMPORARY	
OH40034-B			0.004	0.000		N/A	27-15-100-041	TEMPORARY	
OH40034E-B			N/A	N/A		N/A	27-15-100-042	TEMPORARY	
OH40034-C			0.169	0.000		N/A	27-15-100-044	TEMPORARY	
OH40035	ORLAND PARK FAMILY, LLC	0.716	0.048	0.000	0.670	0.092	27-15-100-047	TEMPORARY	
OH40036	ORLAND II, LLC, WPC-ORLAND II, LLC & INLAND ORLAND PARK PLACE, LLC	0.915	0.050	0.000	0.865	0.073	27-15-100-045	TEMPORARY	
OH40121-A	IN RETAIL FUND RAVINIA, LLC	9.096	318 SQ. FT.	0.000	9.077	N/A	N/A	N/A	
OH40121-B			0.012	0.000		N/A	27-16-206-008	TEMPORARY	
OH40121TE	BOBBYCO, LLC	1.724	N/A	N/A	1.659	0.301	N/A	TEMPORARY	
OH40122			0.065	0.000		0.056	27-16-201-015	TEMPORARY	
OH40123	SUBURBAN BANK & TRUST CO.	1.492	0.058	0.000	1.434	0.041	27-16-201-013	TEMPORARY	
OH40124	DARVIN FURNITURE AND APPLIANCE OF ORLAND PARK, INC.	6.427	0.033	0.000	6.394	0.163	27-16-201-024	TEMPORARY	
OH40125	VILLAGE OF ORLAND PARK	33.306*	0.174	0.000	33.132	N/A	27-16-401-012(pt)	N/A	
OH40126	DARVIN FURNITURE AND APPLIANCE OF ORLAND PARK, INC.	3.215	0.011	0.000	3.204	0.036	27-16-201-025	TEMPORARY	

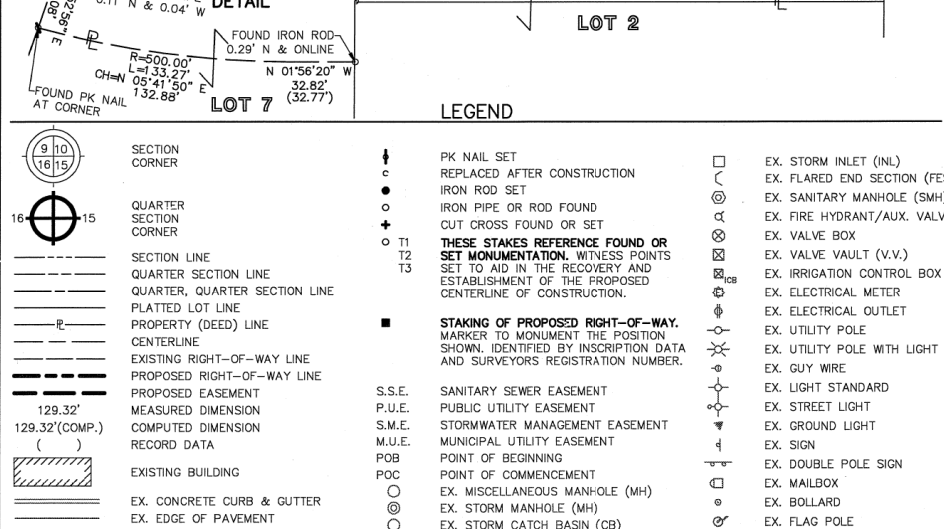
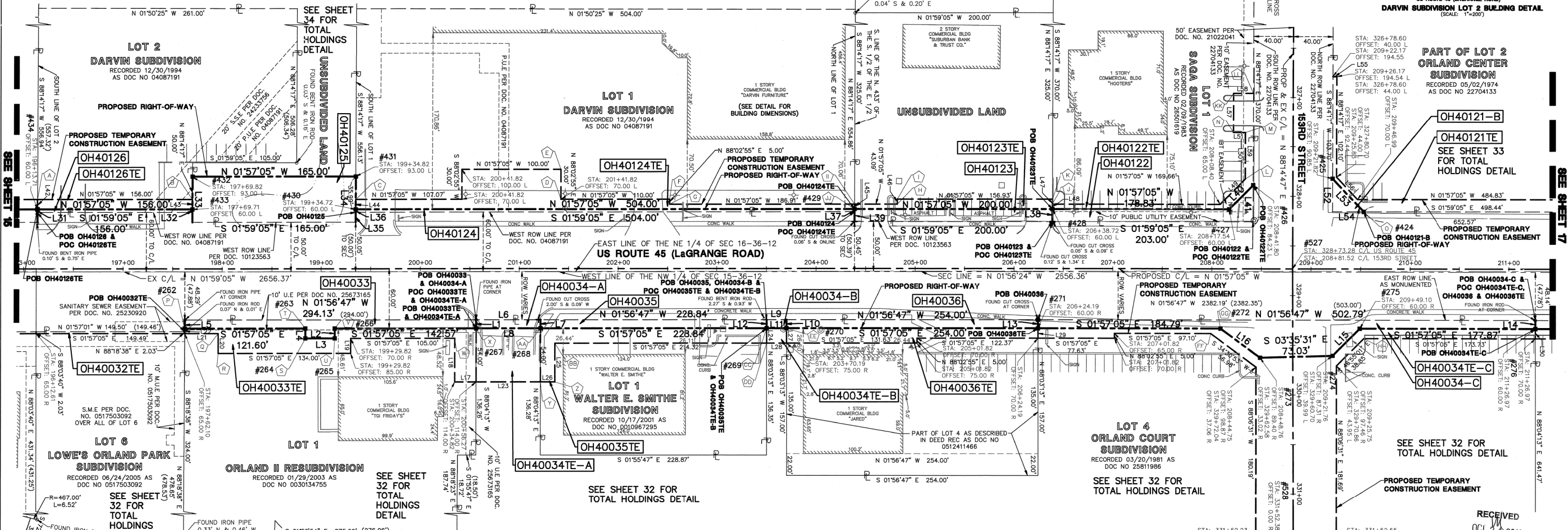
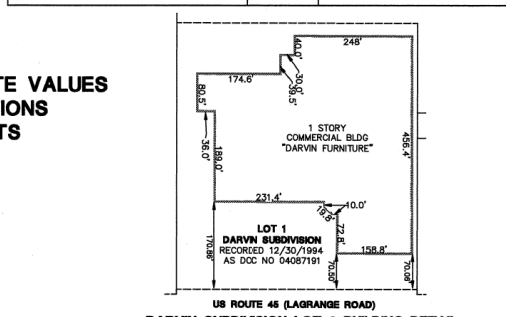
\* AREA WAS SCALED FROM DIGITAL AERIAL PHOTOGRAPHY

CORNER	STATION	OFFSET	CORNER	STATION	OFFSET
A	196+13.75	70.00 L	S	198+83.72	70.00 R
B	197+69.75	70.00 L	T	198+83.72	60.00 R
C	199+34.75	70.00 L	U	199+13.72	70.00 R
D	201+41.82	70.00 L	V	199+13.72	60.00 R
E	201+41.82	100.00 L	W	200+34.82	70.00 R
F	202+51.82	70.00 L	X	200+56.29	60.00 R
G	202+51.82	65.00 L	Y	201+21.28	114.00 R
H	204+81.82	70.00 L	Z	201+35.82	114.00 R
I	204+81.82	65.00 L	AA	201+21.30	60.00 R
J	206+38.74	65.00 L	BB	201+35.82	75.00 R
K	206+38.75	70.00 L	CC	203+50.14	60.00 R
L	208+33.82	90.39 L	DD	203+50.14	75.00 R
M	208+33.82	48.00 R	EE	203+70.41	60.00 R
N	208+33.98	137.44 L	FF	207+98.92	65.00 R
O	208+33.98	48.00 R	GG	208+08.98	60.00 R
P	208+33.98	48.00 R	HH	208+53.24	70.00 R
Q	209+53.18	57.60 L	JJ	204+38.72	60.00 L
R	197+62.10	65.00 R	KK	208+22.11	177.48 L
S	197+95.82	65.00 R	LL	208+56.00	60.00 R
T	197+95.82	65.00 R	MM	208+42.11	177.41 L



SEE SHEET 52 FOR COORDINATE VALUES FOR CENTERLINE POINTS, SECTIONS CORNERS AND ROW MONUMENTS

F.A.P. ROUTE	SECTION	COUNTY	TOTAL SHEETS	SHEET NO.
330/US 45	131st St to 179th St	COOK	877	279



LINE	BEARING	LENGTH	LINE	BEARING	LENGTH
L1	N 88°04'13" E	8.68'	L30	N 88°04'13" E	10.00'
L2	N 88°02'55" E	10.00'	L31	S 88°14'17" W	3.17'
L3	S 01°57'05" E	30.00'	L32	N 88°14'17" E	3.08'
L4	S 88°02'55" W	10.00'	L33	S 88°14'17" W	46.08'
L5	S 88°18'38" W	8.70'	L34	N 88°14'17" E	45.99'
L6	N 01°56'47" W	65.00'	L35	N 88°14'17" E	10.00'
L7	N 88°04'13" E	8.67'	L36	S 88°14'17" W	2.99'
L8	S 01°57'05" E	65.00'	L37	N 88°14'17" E	2.89'
L9	N 01°56'47" W	20.05'	L38	N 88°14'17" E	12.98'
L10	N 88°03'13" E	8.65'	L39	S 88°14'17" W	12.89'
L11	S 01°57'05" E	20.05'	L40	N 46°55'01" W	34.28'
L12	S 88°03'13" W	8.65'	L41	N 88°14'17" E	36.69'
L13	N 88°03'13" E	8.63'	L42	S 88°14'17" W	10.00'
L14	N 88°04'13" E	8.58'	L43	N 88°14'17" E	10.00'
L15	S 46°55'01" E	38.64'	L44	S 88°14'17" W	10.00'
L16	S 34°30'53" W	49.46'	L45	N 88°14'17" E	5.00'
L17	S 01°57'05" E	21.45'	L46	S 88°02'55" W	5.00'
L18	S 88°02'55" W	44.00'	L47	N 88°14'17" E	10.00'
L19	N 88°02'55" E	15.00'	L48	S 88°14'17" W	5.00'
L20	S 88°02'55" W	20.00'	L49	N 46°55'01" W	35.93'
L21	S 01°57'05" E	33.72'	L50	S 88°14'17" W	47.05'
L22	S 88°18'38" W	5.00'	L51	S 01°45'43" E	12.00'
L23	S 01°57'05" E	65.00'	L52	N 88°14'17" E	33.27'
L24	N 88°03'13" E	15.00'	L53	N 44°43'21" E	45.70'
L25	N 88°02'55" E	39.00'	L54	S 01°59'05" E	31.47'
L26	S 01°57'05" E	14.54'	L55	N 01°45'43" W	4.00'
L27	N 88°03'13" E	15.00'	L56	N 44°43'21" E	30.84'
L28	S 01°57'05" E	20.05'	L57	S 88°14'17" W	40.00'
L29	N 88°03'13" E	10.00'	L58	N 01°45'43" W	20.00'
			L59	N 88°14'17" E	93.19'

STATE OF ILLINOIS )  
COUNTY OF DUPAGE ) SS

I, WILLIAM W. WRIGHT, DO HEREBY DECLARE THAT I HAVE SURVEYED THE PLAT OF HIGHWAYS SHOWN HEREON IN SECTIONS 33 AND 34, TOWNSHIP 36 NORTH, RANGE 12 EAST OF THE THIRD PRINCIPAL MERIDIAN, AND SECTIONS 3, 4, 9, 10, 15, 16, 21, 22, 27, 28, 33 AND 34, TOWNSHIP 36 NORTH, RANGE 12 EAST OF THE THIRD PRINCIPAL MERIDIAN, ALL IN COOK COUNTY, ILLINOIS; THAT THE SURVEY IS TRUE AND COMPLETE AS SHOWN TO THE BEST OF MY KNOWLEDGE AND BELIEF; THAT THE PLAT CORRECTLY REPRESENTS SAID SURVEY; THAT ALL MONUMENTS FOUND AND ESTABLISHED ARE OF PERMANENT QUALITY AND OCCUPY THE POSITIONS SHOWN THEREON AND THAT THE MONUMENTS ARE SUFFICIENT TO ENABLE THE SURVEY TO BE RETRACED, MADE FOR THE DEPARTMENT OF TRANSPORTATION, STATE OF ILLINOIS.

DATED AT CHICAGO, ILLINOIS, THIS 17TH DAY OF OCTOBER A.D., 2011.

WILLIAM W. WRIGHT  
3502 PROFESSIONAL LAND SURVEYOR NO. 3502  
LICENSE EXPIRES NOVEMBER 30, 2012

DESIGN FIRM LICENSE NO. 184003350  
LICENSE EXPIRES APRIL 30, 2013

BEARINGS SHOWN HEREON ARE BASED ON ILLINOIS STATE PLANE COORDINATES, EAST ZONE, NORTH AMERICAN DATUM OF 1983. ALL COORDINATE AND DIMENSIONAL VALUES SHOWN HEREON ARE "GROUND" NOT "GRID".

COMBINED SCALE FACTOR (GROUND TO GRID) = 0.9999966013

REVISION DATE	DESCRIPTION	INITIALS
10/17/11	ISSUED FINAL SURVEY TO IDOT	SJP
07/27/11	ADDED POINT NUMBERS FOR COORDINATE TABLE	WWW
07/08/11	REVISED LINE TABLE	WWW
03/09/11	REVISED STA/OFFSETS PER IDOT REVIEW	SJP
03/07/11	ADDED ADDITIONAL STA/OFFSETS TO PARCEL OH1022 PER IDOT COMMENT	SJP
02/14/11	REVISED PARCEL OH1022 PER ENGINEERING CONSULTANT MEMO	SJP
12/16/10	REVISED PER IDOT REVIEW	WWW
11/24/10	REVISED PER IDOT REVIEW	SJP
09/17/10	REVISED PER IDOT REVIEW	SJP
		INITIALS

IDOT14 - 090746 SHEET 1 IS A COVER SHEET AND IS NOT RECORDED

**Manhard CONSULTING LTD**  
200 South Dearborn Street, Suite 200, Chicago, IL 60604  
Tel: 312.467.1000 Fax: 312.467.1001  
www.manhard.com

**PLAT OF HIGHWAYS**  
STATE OF ILLINOIS  
DEPARTMENT OF TRANSPORTATION  
FAP 330/US ROUTE 45  
SECTION: 131st St to 179th St COOK COUNTY  
PROJECT: JCB NO. R-90-004-07  
STATION 196+00 TO STATION 210+00

SCALE: 1" = 50' SHEET 16 OF 55

BUREAU OF LAND ACQUISITION  
201 WEST CENTER COURT  
SCHAMBURG, ILLINOIS 60196

RECORDED ON AS DOCUMENT NO.

BY: [ ]  
DATE: [ ]  
MADE: [ ]  
CHECKED: [ ]  
INKED: [ ]  
R.O.W. PLAT: [ ]  
NOTEBOOK NO.: [ ]

SCANNED

RECEIVED  
OCT 24 2011  
PLATS & LEGALS