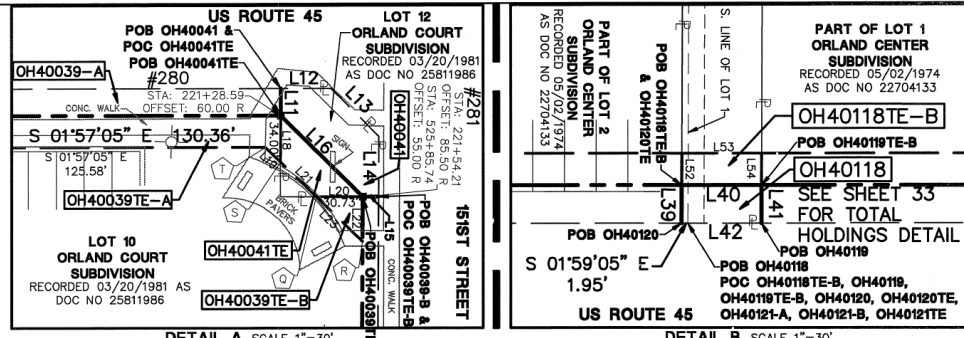


PT OF NW 1/4 SEC 15 & NE 1/4 SEC 16, T36N, R12E OF THE 3RD PM, COOK CO. IL

PARCEL No.	OWNER	TOTAL HOLDINGS (ACRES)	PART TAKEN (ACRES)	PREVIOUSLY DEDICATED (ACRES)	REMAINDER (ACRES)	EASEMENT AREA (ACRES)	PERMANENT INDEX NUMBER	PURPOSE OF EASEMENT	ACQUIRED BY
OH40037-A	INLAND ORLAND PARK PLACE, LLC	12.571	0.011	0.000	12.451	N/A	27-15-100-051	N/A	
OH40037E-A			N/A	N/A		0.013	27-15-100-051	TEMPORARY	
OH40037-B			N/A	N/A		0.109	0.000	27-15-100-030	
OH40037E-B	INLAND ORLAND PARK PLACE IV, LLC	1.128	N/A	N/A	N/A	0.227	27-15-100-051	TEMPORARY	
OH40038TE			N/A	N/A		0.078	27-15-100-050	TEMPORARY	
OH40039-A			N/A	0.000		N/A	0.030	27-15-100-054	
OH40039E-A	ORLAND CHI CHIS, LLC	0.869	N/A	N/A	0.829	N/A	27-15-100-021	TEMPORARY	
OH40039-B			N/A	0.000		0.002	101 SQ. FT.	TEMPORARY	
OH40041			N/A	0.000		N/A	0.006	27-15-100-023	
OH40118	PINNACLE BANK AS TRUSTEE UNDER TRUST NO. 9082	5.225	298 SQ. FT.	0.000	5.218	N/A	27-16-206-005	N/A	
OH40118E-B			N/A	N/A	N/A	250 SQ. FT.	TEMPORARY		
OH40119			N/A	0.000	1.874	N/A	N/A	N/A	
OH40119E-A	BANK ONE BUILDING CORP.	1.981	N/A	N/A	N/A	0.026	27-16-206-002	TEMPORARY	
OH40119E-B			N/A	N/A		0.069	27-16-206-007	TEMPORARY	
OH40120			N/A	0.000		0.730	0.028	27-16-206-007	
OH40121-A	IN RETAIL FUND RAVINIA, LLC	9.096	3'8" SQ. FT.	0.000	9.077	N/A	27-16-206-008	N/A	
OH40121-B			N/A	0.000	N/A	N/A	N/A		
OH40121E			N/A	N/A	N/A	0.301	27-16-206-008	TEMPORARY	

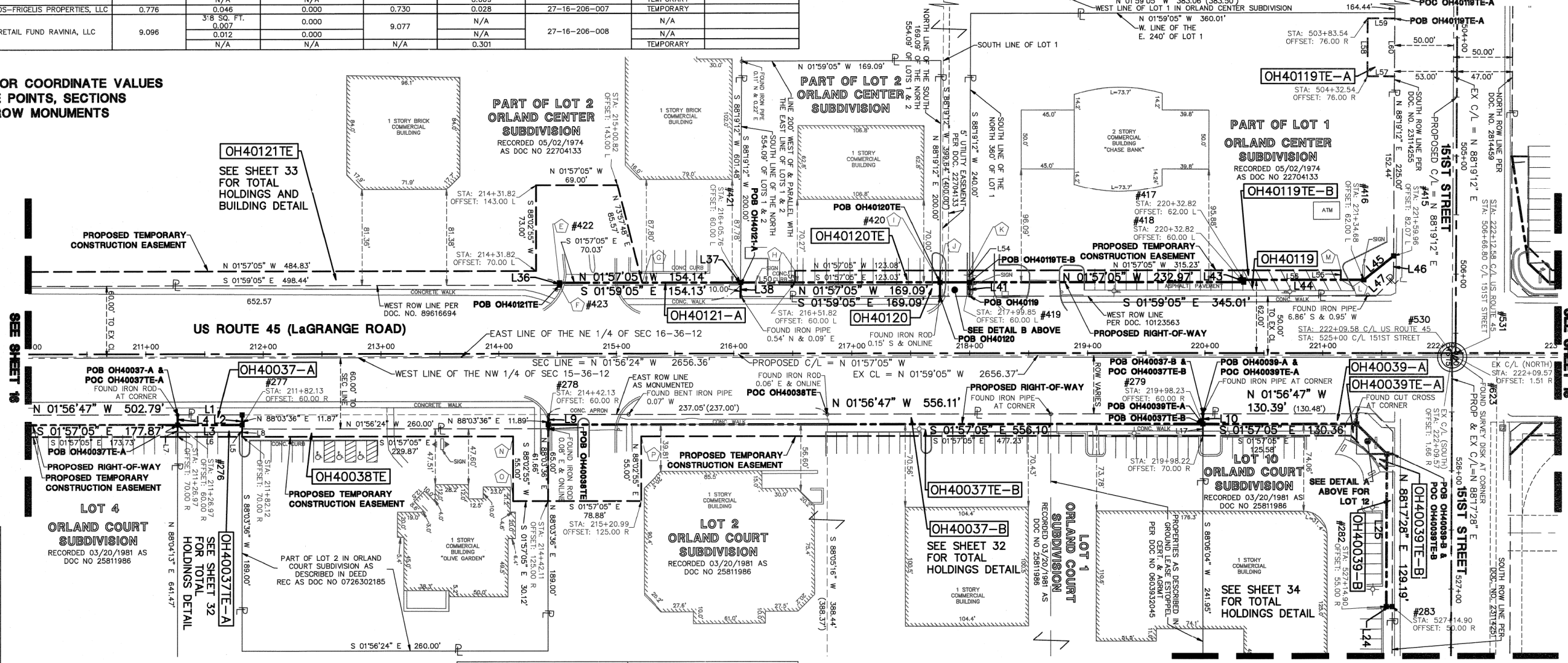


FAP ROUTE	SECTION	COUNTY	TOTAL SHEETS	SHEET NO.
330/US 45	131st St to 179th St	COOK	877	280

STATION 210+00 TO STATION 223+00

FED. ROAD DIST. NO. 1 ILLINOIS FED. AID PROJECT

SEE SHEET 52 FOR COORDINATE VALUES FOR CENTERLINE POINTS, SECTIONS CORNERS AND ROW MONUMENTS



BY	DATE	MADE	CHECKED	INKED	NO.

CORNER	STATION	OFFSET
A	209+22.17	194.55 L
B	209+26.17	194.54 L
C	209+25.83	92.44 L
D	209+21.82	90.85 L
E	214+51.62	60.00 L
F	214+51.62	57.89 L
G	215+21.65	60.00 L
H	216+51.82	70.00 L
I	217+74.85	60.00 L
J	217+74.90	70.00 L
K	217+99.90	70.00 L
L	221+15.13	62.00 L
M	221+15.13	70.00 L
N	214+11.99	70.00 R
O	214+11.99	125.00 R
P	215+20.99	70.00 R
Q	221+39.75	85.50 R
R	221+54.15	99.50 R
S	221+28.53	74.59 R
T	221+23.80	70.00 R

LEGEND

- PK NAIL SET
- REPLACED AFTER CONSTRUCTION
- IRON ROD SET
- IRON PIPE OR ROD FOUND
- CUT CROSS FOUND OR SET
- THESE STAKES REFERENCE FOUND OR SET MONUMENTATION, WITNESS POINTS SET TO AID IN THE RECOVERY AND ESTABLISHMENT OF THE PROPOSED CENTERLINE OF CONSTRUCTION.
- STAKING OF PROPOSED RIGHT-OF-WAY. MARKER TO MONUMENT THE POSITION SHOWN, IDENTIFIED BY INSCRIPTION DATA AND SURVEYORS REGISTRATION NUMBER.
- POINT OF BEGINNING
- POINT OF COMMENCEMENT
- MISCELLANEOUS MANHOLE (MH)
- STORM MANHOLE (MH)
- STORM CATCH BASIN (CB)
- STORM INLET (INL)
- FLARED END SECTION (FES)
- EX. SANITARY MANHOLE (SMH)
- EX. FIRE HYDRANT/AUX. VALVE
- EX. VALVE BOX
- EX. VALVE VAULT (V.V.)
- EX. IRRIGATION CONTROL BOX
- EX. ELECTRICAL METER
- EX. ELECTRICAL OUTLET
- EX. UTILITY POLE
- EX. UTILITY POLE WITH LIGHT
- EX. GUY WIRE
- EX. LIGHT STANDARD
- EX. STREET LIGHT
- EX. GROUND LIGHT
- EX. SIGN
- EX. DOUBLE POLE SIGN
- EX. MAILBOX
- EX. BOLLARD
- EX. FLAG POLE

LINE	BEARING	LENGTH	LINE	BEARING	LENGTH
L1	N 01°56'47" W	55.15'	L34	N 44°43'21" E	45.70'
L2	N 88°03'36" E	8.58'	L35	S 01°59'05" E	31.47'
L3	S 01°57'05" E	55.16'	L36	S 88°02'55" W	2.11'
L4	S 88°04'13" W	8.59'	L37	N 88°19'12" E	2.02'
L5	N 88°03'36" E	10.00'	L38	S 88°19'12" W	12.02'
L6	S 01°57'05" E	55.16'	L39	S 88°19'12" W	11.92'
L7	S 88°04'13" W	10.00'	L40	N 01°57'05" W	25.00'
L8	S 88°03'36" E	6.71'	L41	N 88°19'12" E	11.90'
L9	S 88°03'36" E	8.56'	L42	S 01°59'05" E	23.05'
L10	N 88°06'04" E	8.51'	L43	S 88°02'55" W	2.00'
L11	S 88°17'28" W	8.50'	L44	N 01°57'05" W	101.86'
L12	N 01°56'47" W	15.73'	L45	N 40°23'52" W	32.28'
L13	N 43°10'20" E	21.17'	L46	N 88°19'12" E	18.77'
L14	N 88°17'28" E	19.00'	L47	S 46°40'56" E	21.27'
L15	S 01°56'47" E	5.00'	L48	N 01°45'43" W	4.00'
L16	S 42°54'59" W	36.15'	L49	N 44°43'21" E	30.84'
L17	S 88°06'04" W	10.00'	L50	N 01°57'05" W	46.06'
L18	N 88°17'28" E	14.59'	L51	S 88°02'55" W	10.00'
L19	S 42°13'43" W	6.59'	L52	S 88°19'12" W	10.00'
L20	N 01°56'47" W	14.46'	L53	N 01°57'05" W	25.00'
L21	S 42°13'43" W	15.65'	L54	N 88°19'12" E	10.00'
L22	N 88°17'28" E	13.99'	L55	N 88°02'55" E	8.00'
L23	S 42°13'43" W	20.08'	L56	S 01°57'05" E	82.31'
L24	S 01°42'32" E	5.00'	L57	S 01°40'48" E	23.00'
L25	S 88°17'28" W	129.17'	L58	S 88°19'12" W	49.00'
L26	N 88°17'28" E	12.60'	L59	N 01°40'48" W	23.00'
L27	S 01°56'47" E	5.00'	L60	N 88°19'12" E	49.00'
L28	S 88°17'28" W	12.62'	L61	S 01°40'48" E	10.00'
L29	N 01°42'32" W	5.00'	L62	S 88°19'12" W	52.00'
L30	S 01°42'32" E	5.00'	L63	N 01°40'48" W	10.00'
L31	S 88°17'28" W	42.38'	L64	N 88°19'12" E	42.83'
L32	N 88°17'28" E	42.40'	L65	N 88°19'12" E	9.17'
L33	S 88°14'17" W	33.27'			

STATE OF ILLINOIS)
COUNTY OF DuPAGE) SS

I, WILLIAM W. WRIGHT, DO HEREBY DECLARE THAT I HAVE SURVEYED THE PLAT OF HIGHWAYS SHOWN HEREON IN SECTIONS 33 AND 34, TOWNSHIP 36 NORTH, RANGE 12 EAST OF THE THIRD PRINCIPAL MERIDIAN, AND SECTIONS 3, 4, 9, 10, 15, 16, 21, 22, 27, 28, 33 AND 34, TOWNSHIP 36 NORTH, RANGE 12 EAST OF THE THIRD PRINCIPAL MERIDIAN, ALL IN COOK COUNTY, ILLINOIS; THAT THE SURVEY IS TRUE AND COMPLETE AS SHOWN TO THE BEST OF MY KNOWLEDGE AND BELIEF; THAT THE PLAT CORRECTLY REPRESENTS SAID SURVEY; THAT ALL MONUMENTS FOUND AND ESTABLISHED ARE OF PERMANENT QUALITY AND OCCUPY THE POSITIONS SHOWN THEREON; AND THAT THE MONUMENTS ARE SUFFICIENT TO ENABLE THE SURVEY TO BE RETRACED, MADE FOR THE DEPARTMENT OF TRANSPORTATION, STATE OF ILLINOIS.

DATED AT LOMBARD, ILLINOIS THIS 15TH DAY OF JANUARY A.D., 2012.

ILLINOIS PROFESSIONAL LAND SURVEYOR NO. 3502
DESIGN EXPIRES NOVEMBER 30, 2012

BEARINGS SHOWN HEREON ARE BASED ON ILLINOIS STATE PLANE COORDINATES, EAST ZONE, NORTH AMERICAN DATUM OF 1983. ALL COORDINATE AND DIMENSIONAL VALUES SHOWN HEREON ARE "GROUND" NOT "GRID".

COMBINED SCALE FACTOR (GROUND TO GRID) = 0.999966013

REVISION DATE	DESCRIPTION	INITIALS
01/13/12	REVISED OWNERSHIP FOR PARCEL OH40037	WWW
10/17/11	ISSUED FINAL SURVEY TO IDOT	SJP
07/27/11	ADDED POINT NUMBERS FOR COORDINATE TABLE	WWW
12/16/10	REVISED PER IDOT REVIEW	WWW
09/17/10	REVISED PER IDOT REVIEW	SJP



IDOT14 - 090746 SHEET 1 IS A COVER SHEET AND IS NOT RECORDED

Manhard CONSULTING LTD.
750 Bridgeway, Suite 200, Lombard, IL 60148
Tel: 630.831.8800 Fax: 630.831.8898
Civil Engineers • Surveyors • Water Resources Engineers • Water & Wastewater Engineers
Construction Managers • Environmental Scientists • Landscape Architects • Planners

PLAT OF HIGHWAYS
STATE OF ILLINOIS
DEPARTMENT OF TRANSPORTATION
FAP 330/US ROUTE 45
SECTION: 131st St to 179th St COOK COUNTY
PROJECT: JOB NO. R-90-004-07
STATION 210+00 TO STATION 223+00
SCALE: 1" = 50'
SHEET 17 OF 55

BUREAU OF LAND ACQUISITION
201 WEST CENTER COURT
SCHAUMBURG, ILLINOIS 60196