

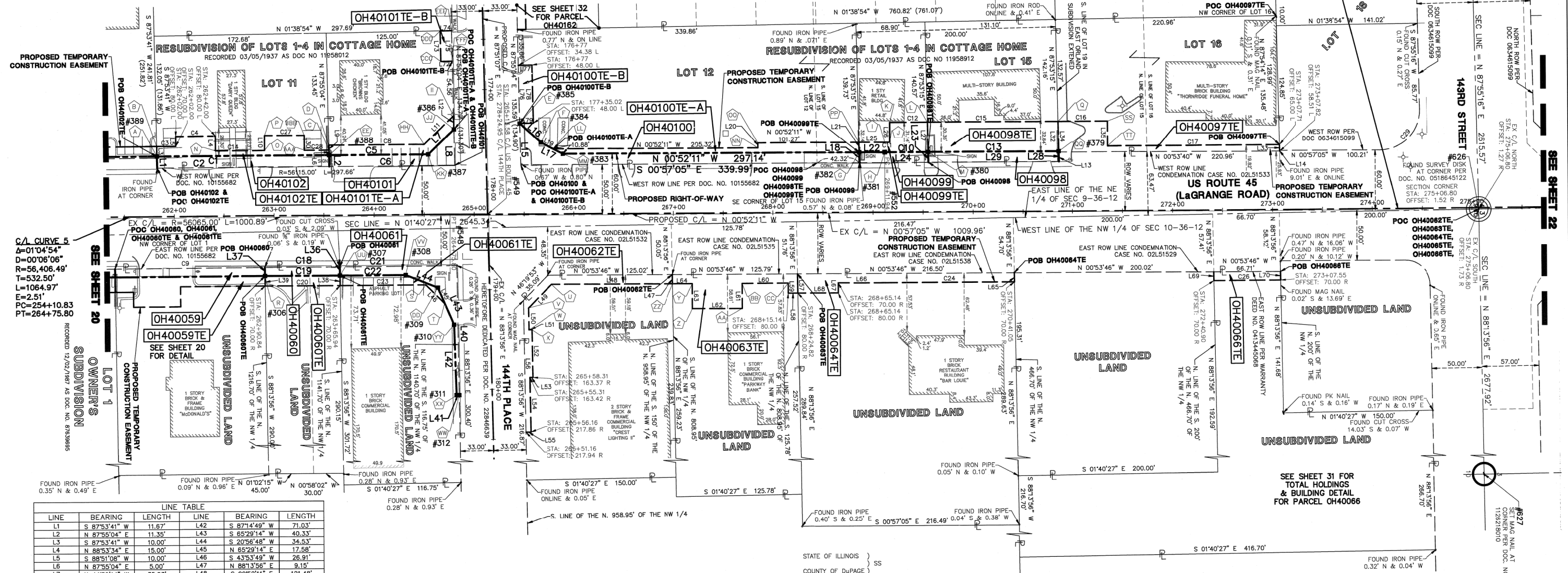
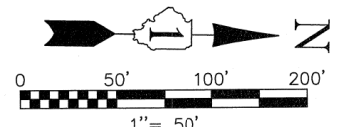
PT OF NE 1/4 SEC 9 & NW 1/4 SEC 10, T36N, R12E OF THE 3RD PM, COOK CO. IL

PARCEL No.	OWNER	TOTAL HOLDINGS (ACRES)	PART TAKEN (ACRES)	PREVIOUSLY DEDICATED (ACRES)	REMAINDER (ACRES)	EASEMENT AREA (ACRES)	PERMANENT INDEX NUMBER	PURPOSE OF EASEMENT	ACQUIRED BY
OH40060	MAKO PROPERTIES, LLC	0.499	0.015	0.000	0.484	0.017	27-10-100-076	TEMPORARY	
OH40061	FIRST NATIONAL BANK OF BLUE ISLAND AS TRUSTEE UNDER TRUST NO. 79252	0.807	0.049	0.000	0.758	0.020	27-10-100-029	TEMPORARY	
OH40062TE	CK REALTY, A PARTNERSHIP	0.822	N/A	N/A	N/A	0.051	27-10-100-028	TEMPORARY	
OH40063TE	PARKWAY BANK AND TRUST COMPANY	0.746	N/A	N/A	N/A	0.057	27-10-100-051	TEMPORARY	
OH40064TE	LAGRANGE VENTURES, LLC	1.440	N/A	N/A	N/A	0.055	27-10-100-057	TEMPORARY	
OH40066TE	MARQUETTE BANK	2.539	N/A	N/A	N/A	0.013	27-10-100-019	TEMPORARY	
OH40097TE	TLJ FAMILY LIMITED PARTNERSHIP	0.680	N/A	N/A	N/A	0.059	27-09-215-003	TEMPORARY	
OH40098	RICH COURT CONDOMINIUM ASSOCIATION	0.425	0.031	0.000	0.394	0.090	27-09-215-040	TEMPORARY	
OH40099	HERITAGE TRUST COMPANY AS TRUSTEE UNDER TRUST NO. 88-3384	0.222	0.017	0.000	0.205	0.033	27-09-215-035	TEMPORARY	
OH40100			0.097	0.000	0.977	0.000		N/A	
OH40100TE-A	TRUE NORTH ENERGY, LLC	1.074	N/A	N/A	N/A	0.045	27-09-215-007	TEMPORARY	
OH40100TE-B			N/A	N/A	N/A	0.018	27-09-215-029	TEMPORARY	
OH40101			0.040	0.000	0.345	0.000		N/A	
OH40101TE-A	STANDARD BANK AND TRUST COMPANY AS TRUSTEE UNDER TRUST NO. 16235	0.385	N/A	N/A	N/A	0.031	27-09-220-021	TEMPORARY	
OH40101TE-B			N/A	N/A	N/A	0.031		TEMPORARY	
OH40102	THE FLOYD E. COOPER TRUST 1555 DATED 6/2/1989	0.526	0.046	0.000	0.480	0.050	27-09-220-022	TEMPORARY	

CORNER	STATION	OFFSET	CORNER	STATION	OFFSET	CORNER	STATION	OFFSET
A	261+83.14	60.00 L	U	265+77.38	70.00 R	NN	267+85.03	65.00 L
B	261+82.99	70.00 L	V	265+54.21	93.55 R	OO	267+85.03	70.00 L
C	263+55.52	60.00 L	W	265+54.56	115.42 R	PP	268+86.31	70.00 L
D	263+55.43	70.00 L	X	265+57.56	115.38 R	QQ	270+86.69	60.00 L
E	265+45.88	90.67 L	Y	267+18.66	70.00 R	SS	271+35.65	90.00 L
F	265+43.30	71.42 L	AA	267+18.66	65.00 R	TT	271+35.63	65.00 L
G	268+86.52	60.00 L	BB	267+68.66	70.00 R	VV	264+31.34	60.00 R
H	269+11.94	60.00 L	CC	268+15.14	70.00 R	WW	264+84.57	180.75 R
I	269+11.94	70.00 L	DD	264+63.43	72.85 R	XX	264+81.96	180.79 R
J	269+17.00	70.00 L	EE	263+55.62	60.00 L	YY	264+79.62	109.80 R
K	269+17.00	90.00 L	FF	263+54.86	130.00 L	ZZ	266+98.86	70.00 R
L	269+54.83	90.00 R	HH	264+50.17	70.00 L	AAA	263+31.00	85.00 L
M	269+55.47	60.00 L	II	264+79.70	98.65 L	BBB	263+31.00	80.00 L
N	262+42.00	65.00 L	JJ	177+25.56	31.67 R	CCC	176+71.00	43.00 R
O	262+91.00	65.00 L	JJ	264+79.99	85.01 L	DDD	176+40.46	43.00 R
P	262+91.00	80.00 L	KK	177+39.21	31.69 R	EEE	176+40.56	31.57 R
Q	270+86.10	90.00 L	KK	264+54.22	80.00 L	FFF	178+71.00	31.81 R
R	264+90.71	80.00 R	LL	265+79.72	65.00 L			
S	264+51.37	70.00 R	MM	265+89.38	60.00 L			
T	264+70.49	88.95 R						

CORNER GG & RR HAVE BEEN INTENTIONALLY DELETED

FAP ROUTE	SECTION	COUNTY	TOTAL SHEETS	SHEET NO.
330/US 45	131st St to 179th St	COOK	877	284



C/L CURVE 5
A=0°04'54"
D=0°06'06"
R=56,406.49'
T=532.50'
L=1064.97'
E=2.51'
PC=254+10.83
PT=264+75.80

SEE SHEET 31 FOR TOTAL HOLDINGS & BUILDING DETAIL FOR PARCEL OH40066

LINE	BEARING	LENGTH	LINE	BEARING	LENGTH
L1	S 87°53'41" W	11.67'	L42	S 87°14'49" W	71.03'
L2	N 87°55'04" E	11.35'	L43	S 65°29'14" W	40.33'
L3	S 87°53'41" W	10.00'	L44	S 20°56'48" W	34.53'
L4	N 88°53'34" E	15.00'	L45	N 65°29'14" E	17.58'
L5	S 88°51'08" W	10.00'	L46	S 43°53'49" W	26.91'
L6	N 87°55'04" E	5.00'	L47	N 88°13'56" E	9.15'
L7	N 44°59'14" W	35.93'	L48	S 00°52'11" E	121.48'
L8	N 87°55'04" E	36.14'	L49	S 48°19'53" S	33.03'
L9	S 87°55'04" W	10.00'	L50	N 88°13'56" E	21.88'
L10	S 88°56'34" W	15.00'	L51	N 01°46'04" W	3.00'
L11	N 44°59'14" W	41.17'	L52	N 88°13'56" E	48.00'
L12	N 87°55'04" E	13.65'	L53	S 01°46'04" E	3.00'
L13	S 87°55'04" W	41.71'	L54	N 88°13'56" E	54.45'
L14	N 41°04'33" E	28.80'	L55	S 01°46'04" E	5.00'
L15	N 26°28'47" E	24.86'	L56	S 88°13'56" W	132.04'
L16	N 87°53'15" E	10.55'	L57	N 88°13'56" E	19.21'
L17	N 26°28'47" E	13.97'	L58	S 00°52'11" E	9.88'
L18	S 89°07'49" W	5.00'	L59	S 89°07'49" W	10.00'
L19	N 87°53'15" E	10.00'	L60	S 00°52'11" E	46.48'
L20	N 00°52'11" W	25.42'	L61	N 89°07'49" E	25.00'
L21	S 87°53'15" E	10.46'	L62	S 00°52'11" E	50.00'
L22	N 00°52'11" W	68.91'	L63	S 89°07'49" W	25.00'
L23	N 00°52'11" W	25.64'	L64	S 00°52'11" E	19.80'
L24	S 89°07'37" W	20.00'	L65	N 88°13'56" E	9.21'
L25	N 87°53'15" E	30.01'	L66	S 00°52'11" E	46.80'
L26	N 87°53'15" E	10.44'	L67	N 89°07'49" E	10.00'
L27	S 00°57'05" E	131.13'	L68	S 00°52'11" E	40.32'
L28	N 88°59'00" E	15.00'	L69	N 88°13'56" E	8.77'
L29	N 87°53'15" E	30.01'	L70	N 88°13'56" E	8.51'
L30	N 87°54'14" E	6.49'	L71	S 02°08'53" E	11.39'
L31	S 87°53'15" W	30.85'	L72	S 87°51'07" W	30.54'
L32	N 89°02'20" E	25.00'	L73	N 01°38'54" W	11.43'
L33	N 88°13'56" E	8.67'	L74	N 87°55'04" W	30.44'
L34	N 88°13'56" W	8.63'	L75	S 87°55'04" W	58.02'
L35	N 88°13'56" W	10.00'	L76	N 02°08'53" W	13.62'
L36	N 88°13'56" W	10.00'	L77	N 87°51'07" W	58.02'
L37	N 88°13'56" W	129.84'	L78	S 02°08'53" E	13.68'
L38	S 01°46'04" E	2.62'	L79	S 02°08'53" E	13.68'

CURVE	RADIUS	LENGTH	CHORD BEARING	CHORD	CURVE	RADIUS	LENGTH	CHORD BEARING	CHORD
C1	56466.49'	172.65'	S 01°04'45" E	172.65'	C16	85497.06'	49.50'	N 01°00'10" W	49.50'
C2	56115.00'	172.84'	S 01°11'01" E	172.84'	C17	85522.06'	171.95'	N 01°04'37" W	171.95'
C3	56476.49'	19.03'	S 01°09'27" E	19.03'	C18	56015.00'	75.00'	S 01°07'26" E	75.00'
C4	56466.49'	40.06'	S 01°07'39" E	40.06'	C19	56346.49'	75.01'	S 01°01'10" E	75.01'
C5	56466.49'	98.70'	S 00°56'30" E	98.70'	C20	56336.49'	75.01'	S 01°01'10" E	75.01'
C6	56115.00'	125.02'	S 01°01'54" E	125.02'	C21	56015.00'	116.76'	S 01°01'33" E	116.76'
C7	56476.49'	94.86'	S 00°56'38" E	94.86'	C22	56346.49'	65.47'	S 00°56'53" E	65.47'
C8	56015.00'	150.01'	S 01°14'20" E	150.01'	C23	56336.49'	85.32'	S 00°56'16" E	85.32'
C9	85527.06'	43.50'	N 00°53'03" W	43.50'	C24	85657.06'	129.21'	N 00°54'48" W	129.21'
C10	85517.06'	5.05'	N 00°52'17" W	5.05'	C25	85657.06'	66.70'	N 01°28'44" W	66.70'
C11	85497.06'	37.79'	N 00°53'08" W	37.79'	C26	56486.49'	40.06'	S 01°02'13" E	40.06'
C12	85527.06'	131.13'	N 00°56'34" W	131.13'	C27	56471.49'	24.85'	S 01°00'15" E	24.85'
C13	56471.49'	49.06'	S 01°04'56" E	49.06'	C28	56471.49'	49.06'	S 01°00'15" E	24.85'
C14	85497.06'	131.13'	N 00°56'32" W	131.13'	C29	40.00'	63.82'	N 46°30'54" W	57.12'

SEE SHEET 52 FOR COORDINATE VALUES FOR CENTERLINE POINTS, SECTIONS CORNERS AND ROW MONUMENTS

STATE OF ILLINOIS)
COUNTY OF DUPAGE) SS
I, WILLIAM W. WRIGHT, DO HEREBY DECLARE THAT I HAVE SURVEYED THE PLAT OF HIGHWAYS SHOWN HEREON IN SECTIONS 33 AND 34, TOWNSHIP 36 NORTH, RANGE 12 EAST OF THE THIRD PRINCIPAL MERIDIAN, AND SECTIONS 3, 4, 9, 10, 15, 16, 21, 22, 27, 28, 33 AND 34, TOWNSHIP 36 NORTH, RANGE 12 EAST OF THE THIRD PRINCIPAL MERIDIAN, ALL IN COOK COUNTY, ILLINOIS; THAT THE SURVEY IS TRUE AND COMPLETE AS SHOWN TO THE BEST OF MY KNOWLEDGE AND BELIEF; THAT THE PLAT CORRECTLY REPRESENTS SAID SURVEY; THAT ALL MONUMENTS FOUND AND ESTABLISHED ARE OF PERMANENT QUALITY AND OCCUPY THE POSITIONS SHOWN THEREON AND THAT THE MONUMENTS ARE SUFFICIENT TO ENABLE THE SURVEY TO BE RETRACED, MADE FOR THE DEPARTMENT OF TRANSPORTATION, STATE OF ILLINOIS.

DATED AT CHICAGO, ILLINOIS, THIS 9TH DAY OF NOVEMBER A.D., 2011.

WILLIAM W. WRIGHT
ILLINOIS PROFESSIONAL LAND SURVEYOR NO. 3502
LICENSE EXPIRES NOVEMBER 30, 2012

DESIGN FIRM LICENSE NO. 184003350
LICENSE EXPIRES APRIL 30, 2013

BEARINGS SHOWN HEREON ARE BASED ON ILLINOIS STATE PLANE COORDINATES, EAST ZONE, NORTH AMERICAN DATUM OF 1983. ALL COORDINATE AND DIMENSIONAL VALUES SHOWN HEREON ARE "GROUND" NOT "GRID".

COMBINED SCALE FACTOR (GROUND TO GRID) = 0.999966013

REVISION DATE	DESCRIPTION	INITIALS
11/09/11	DELETED PARCEL OH40065	WWW
10/17/11	ISSUED FINAL SURVEY TO IDOT	SJP
09/20/11	REVISED PARCEL OH40101TE-A PER IDOT	WWW
07/27/11	ADDED POINT NUMBERS FOR COORDINATE TABLE	WWW
03/09/11	REVISED PARCEL TABLE PER IDOT REVIEW	SJP
03/08/11	REVISED CHORD BEARING DIRECTION PER IDOT COMMENT	SJP
02/14/11	REVISED MULTIPLE PARCELS PER ENGINEERING CONSULTANT MEMO	SJP
10/15/10	REVISED PER IDOT REVIEW	WWW
09/17/10	REVISED PER IDOT REVIEW	SJP
	REVISION DATE	DESCRIPTION

RECORDING: RECORDED ON

IDOT14 - 090746 SHEET 1 IS A COVER SHEET AND IS NOT RECORDED



PLAT OF HIGHWAYS
STATE OF ILLINOIS
DEPARTMENT OF TRANSPORTATION
FAP 330/US ROUTE 45
SECTION: 131st St to 179th St COOK COUNTY
PROJECT: JOB NO. R-90-004-07
STATION 262+00 TO STATION 275+00
SCALE: 1" = 50'
SHEET 21 OF 55
BUREAU OF LAND ACQUISITION
201 WEST CENTER COURT
SCHAUMBURG, ILLINOIS 60196
AS DOCUMENT NO.