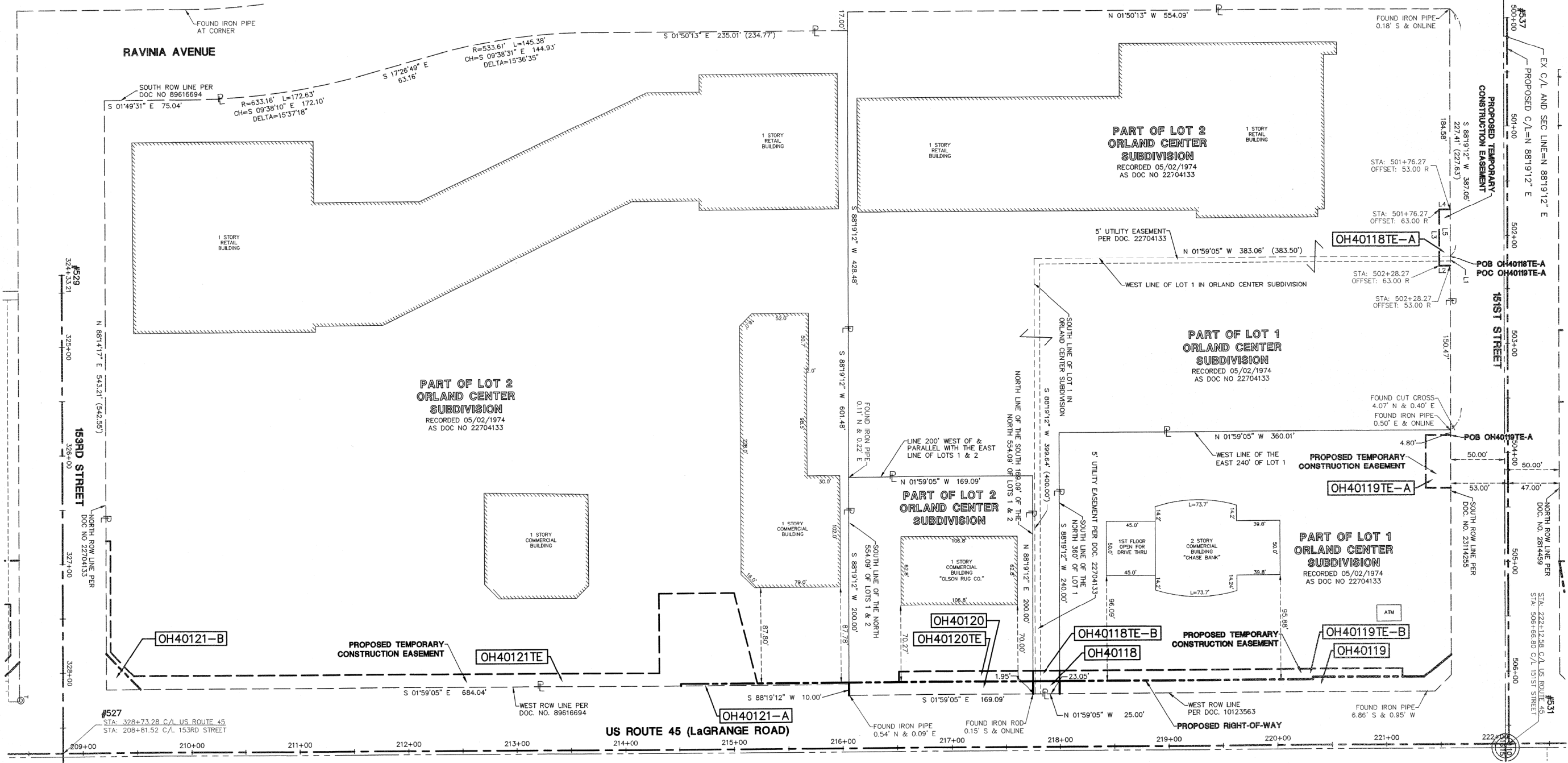
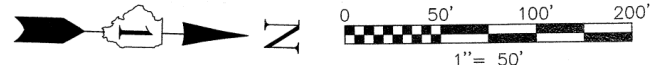


PT OF NE 1/4 SEC 16, T36N, R12E OF THE 3RD PM, COOK CO. IL

PARCEL No.	OWNER	TOTAL HOLDINGS (ACRES)	PART TAKEN (ACRES)	PREVIOUSLY DEDICATED (ACRES)	REMAINDER (ACRES)	EASEMENT AREA (ACRES)	PERMANENT INDEX NUMBER	PURPOSE OF EASEMENT	ACQUIRED BY
OH40118TE-A	PINNACLE BANK AS TRUSTEE UNDER TRUST NO. 9082	5.225	N/A	N/A	N/A	0.012	27-16-206-005 27-16-206-006	TEMPORARY	
OH40119TE-A	BANK ONE BUILDING CORP.	1.981	N/A	N/A	N/A	0.026	27-16-206-002	TEMPORARY	

F.A.P. ROUTE	SECTION	COUNTY	TOTAL SHEETS	SHEET NO.
330/US 45	131st St to 179th St	COOK	877	287
TOTAL HOLDINGS PARCELS OH40118 AND OH40121				
FED. ROAD DIST. NO. 1	ILLINOIS	FED. AID PROJECT		



DATE	BY

R.O.W. PLAT	NOTEBOOK NO.
MADE	
CHECKED	
INKED	

SEE SHEET 16 FOR PROPOSED RIGHT-OF-WAY AND EASEMENT DETAILS

SEE SHEET 52 FOR COORDINATE VALUES FOR CENTERLINE POINTS, SECTIONS CORNERS AND ROW MONUMENTS

LINE	BEARING	LENGTH
L1	N 88°19'12" E	9.17'
L2	S 01°40'48" E	10.00'
L3	S 88°19'12" W	52.00'
L4	N 01°40'48" W	10.00'
L5	N 88°19'12" E	42.83'

SEE SHEET 17 FOR PROPOSED RIGHT-OF-WAY AND EASEMENT DETAILS

STATE OF ILLINOIS)
 COUNTY OF DuPAGE) SS

I, WILLIAM W. WRIGHT, DO HEREBY DECLARE THAT I HAVE SURVEYED THE PLAT OF HIGHWAYS SHOWN HEREON IN SECTIONS 33 AND 34, TOWNSHIP 37 NORTH, RANGE 12 EAST OF THE THIRD PRINCIPAL MERIDIAN, AND SECTIONS 3, 4, 9, 10, 15, 16, 21, 22, 27, 28, 33 AND 34, TOWNSHIP 36 NORTH, RANGE 12 EAST OF THE THIRD PRINCIPAL MERIDIAN, ALL IN COOK COUNTY, ILLINOIS; THAT THE SURVEY IS TRUE AND COMPLETE AS SHOWN TO THE BEST OF MY KNOWLEDGE AND BELIEF; THAT THE PLAT CORRECTLY REPRESENTS SAID SURVEY; THAT ALL MONUMENTS FOUND AND ESTABLISHED ARE OF PERMANENT QUALITY AND OCCUPY THE POSITIONS SHOWN THEREON AND THAT THE MONUMENTS ARE SUFFICIENT TO ENABLE THE SURVEY TO BE RETRACED, MADE FOR THE DEPARTMENT OF TRANSPORTATION, STATE OF ILLINOIS.

DATED AT LOMBARD, ILLINOIS THIS 17TH DAY OF OCTOBER A.D., 2011.

WILLIAM W. WRIGHT
 ILLINOIS PROFESSIONAL LAND SURVEYOR NO. 3502
 LICENSE EXPIRES NOVEMBER 30, 2012

DESIGN FIRM LICENSE NO. 184003350
 LICENSE EXPIRES APRIL 30, 2013

BEARINGS SHOWN HEREON ARE BASED ON ILLINOIS STATE PLANE COORDINATES, EAST ZONE, NORTH AMERICAN DATUM OF 1983. ALL COORDINATE AND DIMENSIONAL VALUES SHOWN HEREON ARE "GROUND" NOT "GRID".

COMBINED SCALE FACTOR (GROUND TO GRID) = 0.999966013

REVISION DATE	DESCRIPTION	INITIALS
10/17/11	ISSUED FINAL SURVEY TO IDCT	SJP
07/27/11	ADDED POINT NUMBERS FOR COORDINATE TABLE	WWW
12/16/10	REVISED PER IDOT REVIEW	WWW
09/17/10	REVISED PER IDOT REVIEW	SJP



IDOT14 - 090746 SHEET 1 IS A COVER SHEET AND IS NOT RECORDED

Manhard CONSULTING LTD

PLAT OF HIGHWAYS
 STATE OF ILLINOIS
 DEPARTMENT OF TRANSPORTATION

FAP 330/US ROUTE 45
 SECTION: 131st St to 179th St COOK COUNTY
 PROJECT: JOB NO. R-90-004-07

TOTAL HOLDINGS PARCELS OH40118 AND OH40121
 SCALE: 1" = 50' SHEET 33 OF 55

BUREAU OF LAND ACQUISITION
 201 WEST CENTER COURT
 SCHAUMBURG, ILLINOIS 60196