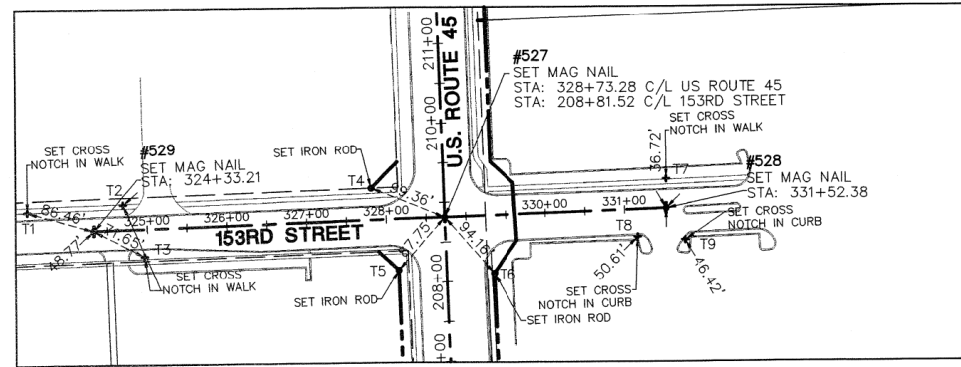


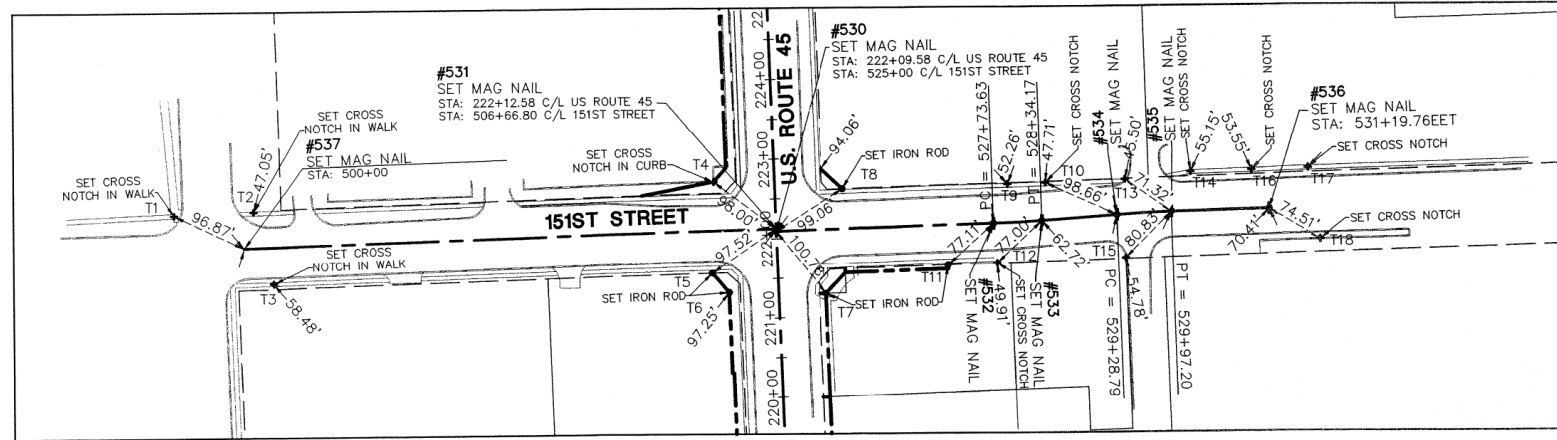
CENTERLINE RECOVERY TIES DETAIL

F.A.P. ROUTE	SECTION	COUNTY	TOTAL SHEETS	SHEET NO.
330/US 45	131st St to 179th St	COOK	877	2908
CENTERLINE RECOVERY TIE DETAILS				
FED. ROAD DIST. NO. 1	ILLINOIS	FED. AID PROJECT		

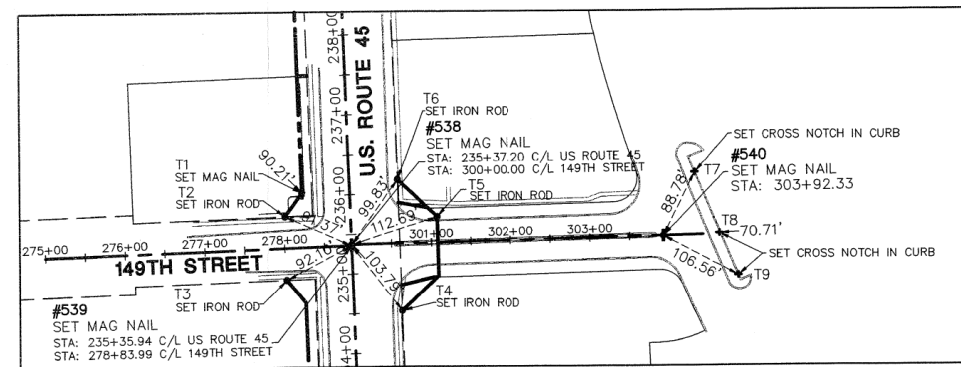
DETAIL OF POINT NO. 527, 528 & 529
SCALE: 1" = 120'



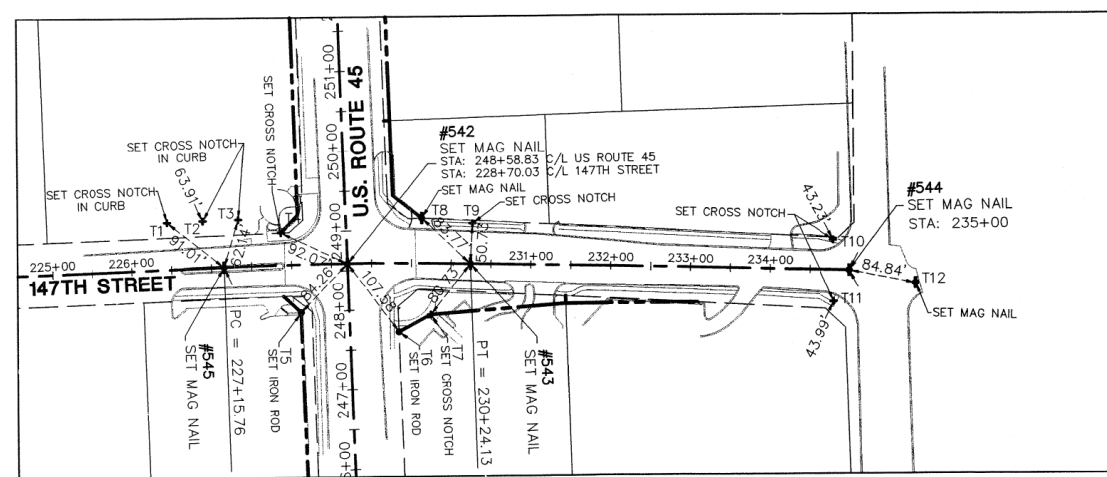
DETAIL OF POINT NO. 530, 531, 532, 533, 534, 535, 536 & 537
SCALE: 1" = 120'



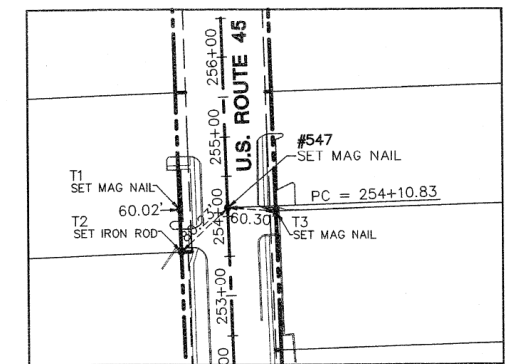
DETAIL OF POINT NO. 538, 539 & 540
SCALE: 1" = 120'



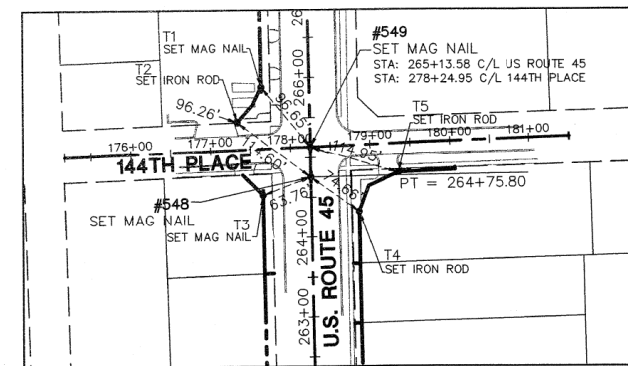
DETAIL OF POINT NO. 542 THRU 545
SCALE: 1" = 120'



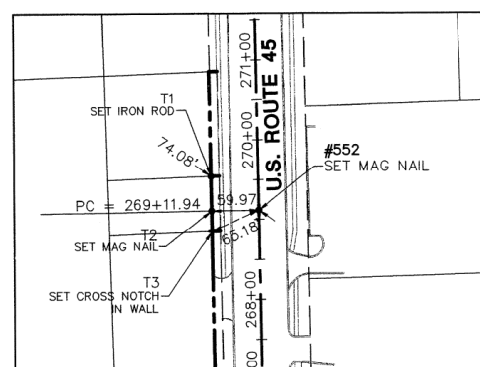
DETAIL OF POINT NO. 547
SCALE: 1" = 120'



DETAIL OF POINT NO. 548 & 549
SCALE: 1" = 120'



DETAIL OF POINT NO. 552
SCALE: 1" = 120'



LEGEND

	SECTION CORNER		PK NAIL SET
	QUARTER SECTION CORNER		REPLACED AFTER CONSTRUCTION IRON ROD SET
	SECTION LINE		IRON PIPE OR ROD FOUND
	QUARTER SECTION LINE		CUT CROSS FOUND OR SET
	QUARTER, QUARTER SECTION LINE		THESE STAKES REFERENCE FOUND OR SET MONUMENTATION. WITNESS POINTS SET TO AID IN THE RECOVERY AND ESTABLISHMENT OF THE PROPOSED CENTERLINE OF CONSTRUCTION.
	PLATTED LOT LINE		STAKING OF PROPOSED RIGHT OF WAY. MARKER TO MONUMENT THE POSITION SHOWN, IDENTIFIED BY INSCRIPTION DATA AND SURVEYORS REGISTRATION NUMBER.
	PROPERTY (DEED) LINE		
	CENTERLINE		
	EXISTING RIGHT-OF-WAY LINE		
	PROPOSED RIGHT-OF-WAY LINE		
	PROPOSED EASEMENT		
	MEASURED DIMENSION		
	COMPUTED DIMENSION		
	RECORD DATA		
	EXISTING BUILDING		

SEE SHEET 52 FOR COORDINATE VALUES FOR CENTERLINE POINTS, SECTIONS CORNERS AND ROW MONUMENTS

STATE OF ILLINOIS)
COUNTY OF DuPAGE) SS

I, WILLIAM W. WRIGHT, DO HEREBY DECLARE THAT I HAVE SURVEYED THE PLAT OF HIGHWAYS SHOWN HEREON IN SECTIONS 33 AND 34, TOWNSHIP 37 NORTH, RANGE 12 EAST OF THE THIRD PRINCIPAL MERIDIAN, AND SECTIONS 3, 4, 9, 10, 15, 16, 21, 22, 27, 28, 33 AND 34, TOWNSHIP 36 NORTH, RANGE 12 EAST OF THE THIRD PRINCIPAL MERIDIAN, ALL IN COOK COUNTY, ILLINOIS; THAT THE SURVEY IS TRUE AND COMPLETE AS SHOWN TO THE BEST OF MY KNOWLEDGE AND BELIEF; THAT THE PLAT CORRECTLY REPRESENTS SAID SURVEY, THAT ALL MONUMENTS FOUND AND ESTABLISHED ARE OF PERMANENT QUALITY AND OCCUPY THE POSITIONS SHOWN THEREON AND THAT THE MONUMENTS ARE SUFFICIENT TO ENABLE THE SURVEY TO BE RETRACED, MADE FOR THE DEPARTMENT OF TRANSPORTATION, STATE OF ILLINOIS.

DATED AT LOMBARD, ILLINOIS THIS 17TH DAY OF OCTOBER A.D., 2011.

ILLINOIS PROFESSIONAL LAND SURVEYOR NO. 3502
LICENSE EXPIRES NOVEMBER 30, 2012

DESIGN FIRM LICENSE NO. 184003350
LICENSE EXPIRES APRIL 30, 2013

BEARINGS SHOWN HEREON ARE BASED ON ILLINOIS STATE PLANE COORDINATES, EAST ZONE, NORTH AMERICAN DATUM OF 1983. ALL COORDINATE AND DIMENSIONAL VALUES SHOWN HEREON ARE "GROUND" NOT "GRID".

COMBINED SCALE FACTOR (GROUND TO GRID) = 0.999966013

10/17/11	ISSUED FINAL SURVEY TO IDOT	WWW
REVISION DATE	DESCRIPTION	INITIALS

RECEIVED
OCT 24 2011
PLATS & LEGALS

IDOT14 - 090746 SHEET 1 IS A COVER SHEET AND IS NOT RECORDED



PLAT OF HIGHWAYS
STATE OF ILLINOIS
DEPARTMENT OF TRANSPORTATION
FAP 330/US ROUTE 45
SECTION: 131st St to 179th St COOK COUNTY
PROJECT: JOB NO. R-90-004-07

CENTERLINE RECOVERY TIE DETAILS

SCALE: 1" = 50'

SHEET 54 OF 55

BUREAU OF LAND ACQUISITION
201 WEST CENTER COURT
SCHAUMBURG, ILLINOIS 60196

R.O.W. PLAT	MADE	DATE
NOTEBOOK NO.	CHECKED	
	INKED	

September 29, 2011 - 10:45 - Dwg Name: P:\a1114\veg\Srv\Final Drawings\Plot of Highways\54 CL TIE DETAILS.dwg Updated By: ap1114