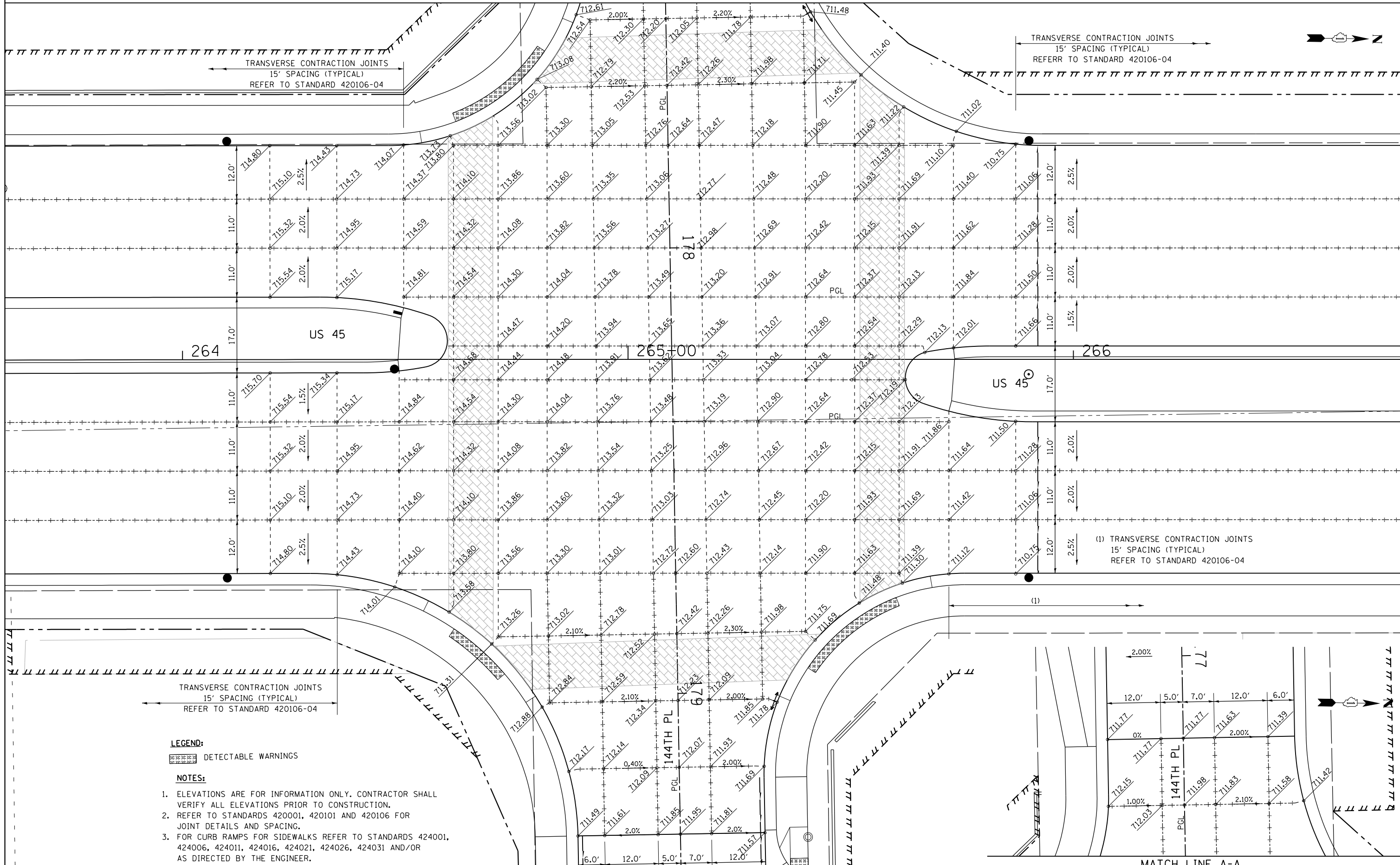


MATCH LINE A-A SEE BELOW RIGHT



TRANSVERSE CONTRACTION JOINTS
15' SPACING (TYPICAL)
REFER TO STANDARD 420106-04

TRANSVERSE CONTRACTION JOINTS
15' SPACING (TYPICAL)
REFER TO STANDARD 420106-04

264

US 45

265+00

266

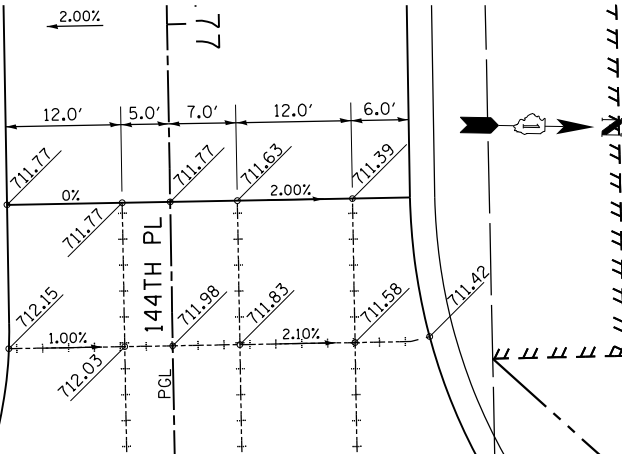
US 45

(1) TRANSVERSE CONTRACTION JOINTS
15' SPACING (TYPICAL)
REFER TO STANDARD 420106-04

TRANSVERSE CONTRACTION JOINTS
15' SPACING (TYPICAL)
REFER TO STANDARD 420106-04

LEGEND:
[Symbol] DETECTABLE WARNINGS

- NOTES:**
- ELEVATIONS ARE FOR INFORMATION ONLY. CONTRACTOR SHALL VERIFY ALL ELEVATIONS PRIOR TO CONSTRUCTION.
 - REFER TO STANDARDS 420001, 420101 AND 420106 FOR JOINT DETAILS AND SPACING.
 - FOR CURB RAMP FOR SIDEWALKS REFER TO STANDARDS 424001, 424006, 424011, 424016, 424021, 424026, 424031 AND/OR AS DIRECTED BY THE ENGINEER.



MATCH LINE A-A

100 S. WACKER DR.
 100 S.WITE 600
 CHICAGO, IL 60606
 TEL (312) 939-1000
 FAX (312) 939-4998
URS

FILE NAME = D160M61-SHT-PAVEMENT-DETAILS06.dgn
SHT.PLAN

| | | |
|-------------------------------|-------------------|-----------|
| USER NAME = Anthony.Plutz | DESIGNED - JTF | REVISED - |
| PLOT SCALE = 20.000000' / in. | DRAWN - JTF | REVISED - |
| PLOT DATE = 3/14/2013 | CHECKED - MJT | REVISED - |
| | DATE - 03/13/2013 | REVISED - |

STATE OF ILLINOIS
DEPARTMENT OF TRANSPORTATION

INTERSECTION DETAILS
US 45 (LAGRANGE ROAD) AND 144TH PLACE

SCALE: 1"=10' SHEET 6 OF 7 SHEETS STA. TO STA.

| F.A.P. RTE. | SECTION | COUNTY | TOTAL SHEETS | SHEET NO. |
|---------------------------|---------|--------|--------------------|-----------|
| 330 | 103R-4 | COOK | 877 | 296 |
| PD-06 | | | CONTRACT NO. 60M61 | |
| ILLINOIS FED. AID PROJECT | | | | |