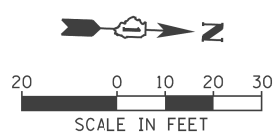


RESTORATION OF WORK AREA, RESTORATION OF THE TRAFFIC SIGNAL WORK AREA SHALL BE INCIDENTAL TO THE RELATED PAY ITEM SUCH AS FOUNDATION, CONDUIT, HANDHOLE, TRENCH AND BACKFILL, ETC., AND NO EXTRA COMPENSATION SHALL BE ALLOWED. ALL ROADWAY SURFACES SUCH AS SHOULDERS, MEDIANS, SIDEWALKS, PAVEMENT, ETC. SHALL BE REPLACED IN KIND. ALL DAMAGE TO MOWED LAWNS SHALL BE REPLACED WITH AN APPROVED SOD, AND ALL DAMAGE TO UNMOWED FIELDS SHALL BE SEEDED IN ACCORDANCE WITH STANDARD SPECIFICATIONS 252 AND 250 RESPECTIVELY.

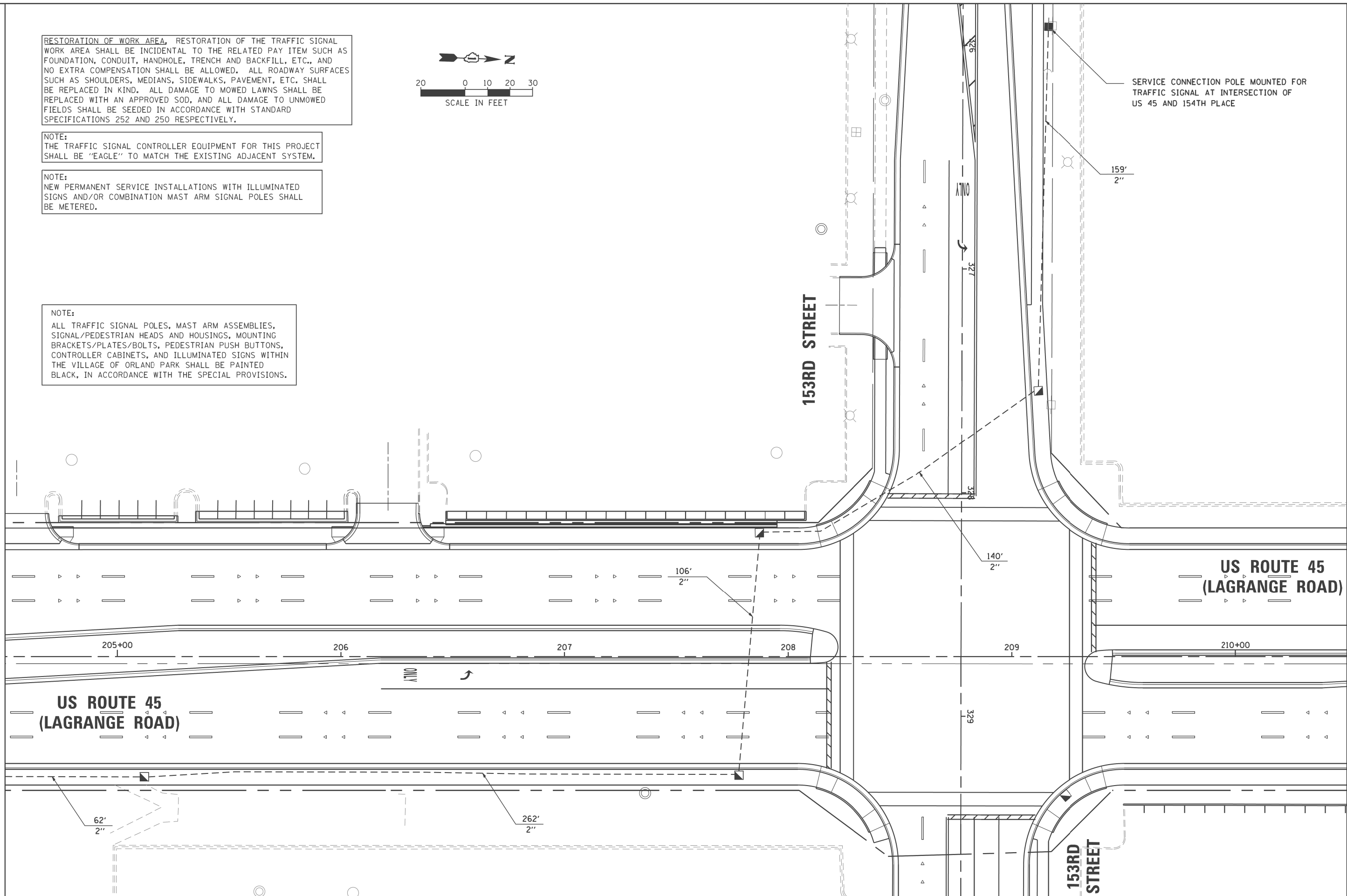
NOTE:
THE TRAFFIC SIGNAL CONTROLLER EQUIPMENT FOR THIS PROJECT SHALL BE "EAGLE" TO MATCH THE EXISTING ADJACENT SYSTEM.

NOTE:
NEW PERMANENT SERVICE INSTALLATIONS WITH ILLUMINATED SIGNS AND/OR COMBINATION MAST ARM SIGNAL POLES SHALL BE METERED.

NOTE:
ALL TRAFFIC SIGNAL POLES, MAST ARM ASSEMBLIES, SIGNAL/PEDESTRIAN HEADS AND HOUSINGS, MOUNTING BRACKETS/PLATES/BOLTS, PEDESTRIAN PUSH BUTTONS, CONTROLLER CABINETS, AND ILLUMINATED SIGNS WITHIN THE VILLAGE OF ORLAND PARK SHALL BE PAINTED BLACK, IN ACCORDANCE WITH THE SPECIAL PROVISIONS.



MATCH LINE STA 204+50
SEE DRAWING TD-20A



FILE NAME =	USER NAME =	DESIGNED - BA	REVISED -
		DRAWN - BA	REVISED -
		CHECKED - DB	REVISED -
		DATE - 03/13/2013	REVISED -

**STATE OF ILLINOIS
DEPARTMENT OF TRANSPORTATION**

**TRAFFIC SIGNAL INSTALLATION PLAN
US 45 (LAGRANGE ROAD) AND 154TH PLACE**

SCALE: 1"=20' SHEET 3 STA. TO STA.

F.A.P. RTE.	SECTION	COUNTY	TOTAL SHEETS	SHEET NO.
330	103R-4	COOK	877	333
TD-20C			CONTRACT NO. 60M61	
ILLINOIS FED. AID PROJECT				