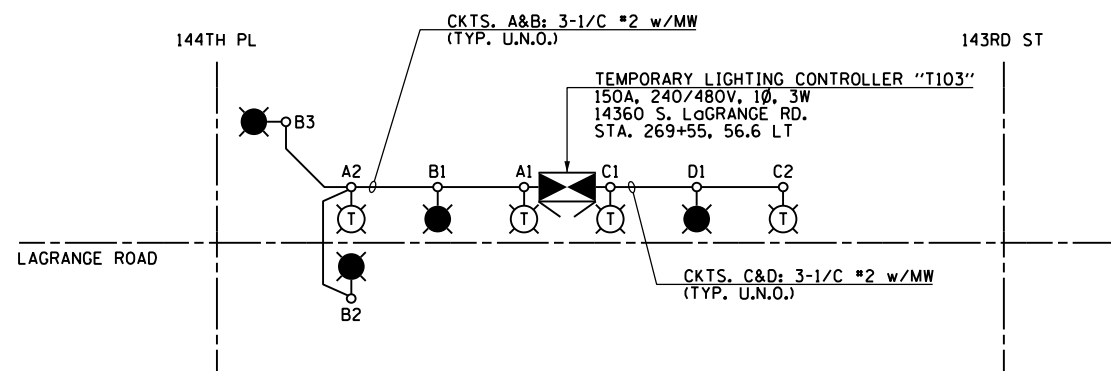


TEMPORARY LIGHTING CONTROLLER T102 WIRING DIAGRAM
N.T.S.



TEMPORARY LIGHTING CONTROLLER T103 WIRING DIAGRAM
N.T.S.

- LEGEND:**
- TEMPORARY LIGHTING UNIT: 400W, 240V PHASE TO NEUTRAL, HPS LUMINAIRE WITH TYPE III DISTRIBUTION, 60'-0" CLASS 4 WOOD POLE, 47'-6" MOUNTING HEIGHT, 12'-0" MAST ARM, WITH 5A FUSES (RED PHASE-OPEN SYMBOL, BLACK PHASE-SHADED SYMBOL)
 - EXISTING PERMANENT LIGHTING UNIT
 - TEMPORARY ROADWAY LIGHTING CONTROLLER 150A, 240/480V, 1Ø, 3W
 - PROPOSED TEMPORARY WOOD POLE (NOTE 3)
 - TEMPORARY AERIAL CABLE AND MESSENGER WIRE AS IDENTIFIED

- NOTES:**
1. SEE DRAWING E-1 FOR ELECTRICAL ABBREVIATIONS. SEE DRAWING E-2 FOR ELECTRICAL GENERAL NOTES.
 2. COLOR CODING OF CONDUCTORS FOR 240/480V, 1Ø, 3W LIGHTING SYSTEM IS AS FOLLOWS:
"A" PHASE - RED
"B" PHASE - BLACK
NEUTRAL - WHITE
GROUND - GREEN
 3. TEMPORARY POLES SHOWN ONLY AT LOCATIONS WHERE THREE OR MORE AERIAL CABLE RUNS MEET. REFER TO DRAWINGS E-10 THROUGH E-16 FOR ALL TEMPORARY POLE LOCATIONS.

LIGHTING CONTROLLER "T102" ROADWAY LIGHTING PANEL LOAD TABLE

CIRCUIT	RED PHASE		CIRCUIT	BLACK PHASE	
	AMPS	WATTS		AMPS	WATTS
A	22	5280	B	18	4320
C	22	5280	D	22	5280
E	--	--	F	--	--
G	--	--	H	--	--
I	--	--	J	--	--
K	--	--	L	--	--
TOTAL	44	10560	TOTAL	40	9600

LOAD TABULATION IS BASED ON THE FOLLOWING:
400W HPS LUMINAIRE: 2.0A AT 240V

LIGHTING CONTROLLER "T103" ROADWAY LIGHTING PANEL LOAD TABLE

CIRCUIT	RED PHASE		CIRCUIT	BLACK PHASE	
	AMPS	WATTS		AMPS	WATTS
A	4	960	B	6	1440
C	4	960	D	2	480
E	--	--	F	--	--
G	--	--	H	--	--
I	--	--	J	--	--
K	--	--	L	--	--
TOTAL	8	1920	TOTAL	8	1920

LOAD TABULATION IS BASED ON THE FOLLOWING:
400W HPS LUMINAIRE: 2.0A AT 240V

100 S. WACKER DR.
 SUITE 500
 CHICAGO, IL 60606
 TEL (312) 939-1000
 FAX (312) 939-4198



FILE NAME = D160M61-SHT-E44.dgn	USER NAME = michal_bartusiewicz	DESIGNED - JLW	REVISED -
SHT_PLAN	PLOT SCALE = 2.000000' / in.	DRAWN - CJM	REVISED -
DT60M61-SHT-E44.dgn 3/15/2013 2:27:28 PM	PLOT DATE = 3/15/2013	CHECKED - KMY	REVISED -
		DATE - 03/13/2013	REVISED -

**STATE OF ILLINOIS
DEPARTMENT OF TRANSPORTATION**

**US 45 (LaGRANGE ROAD)
TEMPORARY LIGHTING CONTROLLER "T102" AND "T103"
WIRING DIAGRAMS**

F.A.P. RTE. 330	SECTION 103R-4	COUNTY COOK	TOTAL SHEETS 877	SHEET NO. 455
SCALE: NONE		SHEET 1 OF 1 SHEETS		STA. TO STA.
E-44			CONTRACT NO. 60M61	
ILLINOIS FED. AID PROJECT				