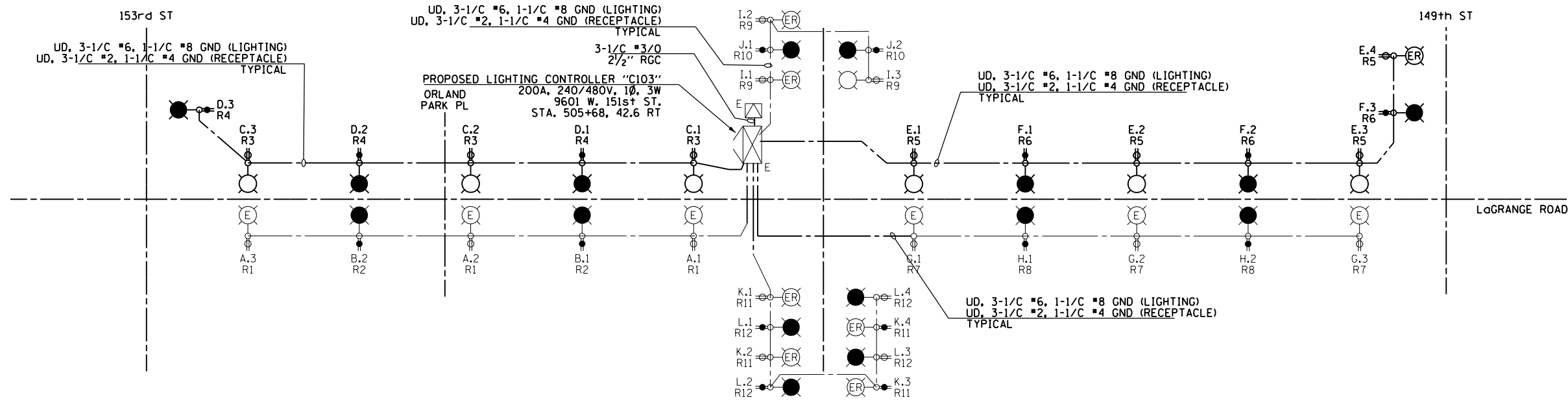
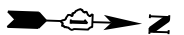


LEGEND:

- PROPOSED LIGHTING UNIT: 400W, 240V PHASE TO NEUTRAL, HPS LUMINAIRE WITH TYPE III DISTRIBUTION, 45'-2" ALUMINUM POLE SHAFT ON 24" DIAMETER CONCRETE FOUNDATION, 47'-6" MOUNTING HEIGHT, 12'-0" MAST ARM, WITH 5A FUSES AND T-BASE (RED PHASE-OPEN SYMBOL, BLACK PHASE-SHADED SYMBOL)
- PROPOSED 120V, 20A, GFCI RECEPTACLE ON PROPOSED LIGHTING UNIT (ORANGE PHASE-OPEN SYMBOL, BROWN PHASE-SHADED SYMBOL)
- PROPOSED COMBINATION POLE LIGHTING UNIT: 400W, 2.0A AT 240V PHASE TO PHASE, HPS LUMINAIRE WITH TYPE III DISTRIBUTION
- PROPOSED ROADWAY LIGHTING UNIT INSTALLED IN EARLIER CONSTRUCTION STAGE
- PROPOSED 120V, 20A, GFCI RECEPTACLE INSTALLED IN EARLIER CONSTRUCTION STAGE
- PROPOSED COMBINATION POLE LIGHTING UNIT INSTALLED IN EARLIER CONSTRUCTION STAGE
- PROPOSED ROADWAY LIGHTING CONTROLLER INSTALLED IN EARLIER CONSTRUCTION STAGE
- PROPOSED COMBINATION LIGHTING CONTROLLER INSTALLED IN EARLIER CONSTRUCTION STAGE
- COMBINATION SERVICE DISCONNECT INSTALLED IN EARLIER CONSTRUCTION STAGE
- EXISTING COMED PAD-MOUNTED TRANSFORMER FOR UTILITY SERVICE CONNECTION
- PROPOSED CONDUIT AND CABLE TO SECONDARY SIDE OF UTILITY SERVICE CONNECTION INSTALLED IN EARLIER CONSTRUCTION STAGE
- PROPOSED UNIT DUCT: SIZE AND QUANTITY OF CONDUCTORS AS INDICATED
- PROPOSED UNIT DUCT INSTALLED IN EARLIER CONSTRUCTION STAGE

NOTES:

1. SEE DRAWING E-1 FOR ELECTRICAL ABBREVIATIONS. SEE DRAWING E-2 FOR ELECTRICAL GENERAL NOTES.
2. COLOR CODING OF CONDUCTORS FOR 240/480V, 1Ø, 3W LIGHTING SYSTEM IS AS FOLLOWS:
 "A" PHASE - RED
 "B" PHASE - BLACK
 NEUTRAL - WHITE
 GROUND - GREEN
3. COLOR CODING OF CONDUCTORS FOR 120/240V, 1Ø, 3W RECEPTACLE SYSTEM IS AS FOLLOWS:
 "A" PHASE - ORANGE
 "B" PHASE - BROWN
 NEUTRAL - GRAY
 GROUND - GREEN



LIGHTING CONTROLLER "C103" STAGE 3 WIRING DIAGRAM
N.T.S.

CIRCUIT	RED PHASE		CIRCUIT	BLACK PHASE	
	AMPS	WATTS		AMPS	WATTS
A	6	1440	B	4	480
C	6	1440	D	5.1	1224
E	7.1	1704	F	5.1	1224
G	6	1440	H	4	480
I	3.3	792	J	2.2	528
K	4.4	1056	L	4.4	1056
M	--	--	N	--	--
O	--	--	P	--	480
Q	--	--	R	--	--
S	--	--	T	--	--
U	--	--	V	--	--
W	15	3600	X	12	2880
TOTAL	47.8	11472	TOTAL	52.625	8832

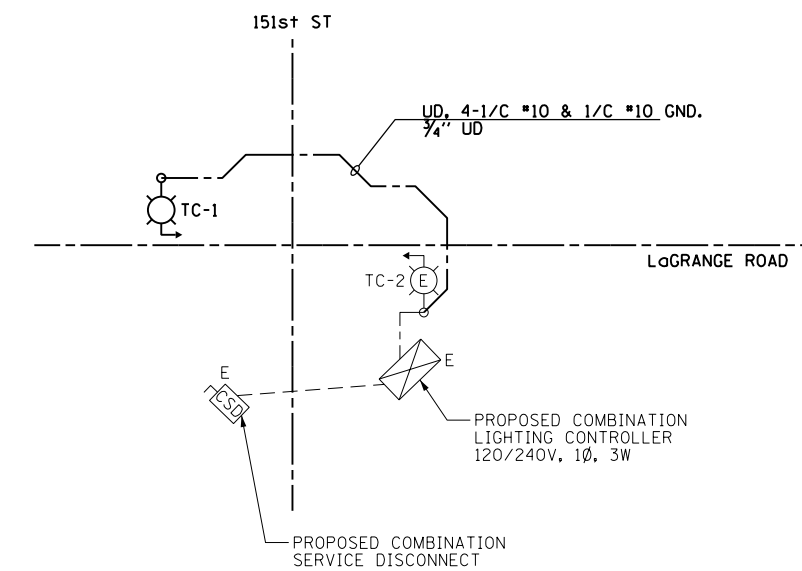
LOAD TABULATION IS BASED ON THE FOLLOWING:

400W HPS LUMINAIRE: 2.0A AT 240V
 250W HPS LUMINAIRE: 1.1A AT 240V

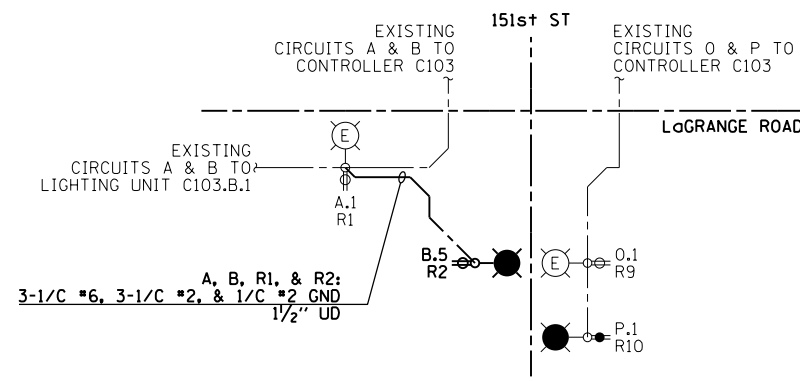
CIRCUIT	ORANGE PHASE		CIRCUIT	BROWN PHASE	
	AMPS	WATTS		AMPS	WATTS
R1	4.5	540	R2	3	360
R3	4.5	540	R4	4.5	540
R5	6	720	R6	4.5	540
R7	4.5	540	R8	3	360
R9	4.5	540	R10	3	360
R11	6	720	R12	6	720
R13	--	--	R14	--	--
R15	--	--	R16	--	--
R17	--	--	R18	--	--
TOTAL	30	3600	TOTAL	24	2880

LOAD TABULATION IS BASED ON THE FOLLOWING:

180W RECEPTACLE: 1.5A AT 120V
 * FOR FUTURE MEDIAN RECEPTACLE LOADS



COMBINATION LIGHTING CONTROLLER "C103" STAGE 3 WIRING DIAGRAM
N.T.S.



LIGHTING CONTROLLER "C103" STAGE 4 PARTIAL WIRING DIAGRAM
N.T.S.

FILE NAME = D160M61-SHT-E50.dgn	USER NAME = michal_bartusiewicz	DESIGNED - JLW	REVISED -
SHT_PLAN	PLOT SCALE = 2.000000' / in.	DRAWN - CJM	REVISED -
DT60M61-SHT-E50.dgn 3/15/2013 2:27:31 PM	PLOT DATE = 3/15/2013	CHECKED - KMY	REVISED -
	DATE = 03/13/2013	DATE - 03/13/2013	REVISED -

F.A.P. RTE. 330	SECTION 103R-4	COUNTY COOK	TOTAL SHEETS 877	SHEET NO. 461
E-50		CONTRACT NO. 60M61		
ILLINOIS FED. AID PROJECT				